



Hidden Springs Ranch

Ekalaka, Montana

\$699,900.

Sonny Todd Real Estate

301 W First, PO Box 788

Big Timber, MT 59011

Office: (406) 932-6668

(406) 932-1031

Toll Free: 1-866-932-1031

Fax: (406) 932-4838

info@sonnytoddrealestate.com

www.sonnnytoddrealestate.com



AGENTS NOTE:

If privacy is what you are looking for, this property is for you. Surrounded on three sides by the Custer National Forest, the wildlife is abundant and the views on this 220 acres are spectacular. Antelope, mule deer, white tail deer, elk, turkeys, beaver, mountain lions, bobcats, and coyotes water at the ponds created by beaver dams on the creek that is fed by the two natural springs. The ranch landscape ranges from forested hills, to lush creek bottoms, to open hayfields.

The custom home with a red metal roof and rock exterior walls nestles into the landscape. Enter from a screened in porch that leads into the great room. The great room's special features are a beautiful pot belly antique wood stove that sits in front of a stone chimney made from Yellowstone River rock, vaulted cedar ceilings, and French doors to the deck. An open floor plan allows you to access the custom kitchen. Knotty pine cupboards and maple wood floors add additional warmth, a bar adds storage, lots of extra work space, and informal eating. Walk over to the dining area and enjoy the custom chandelier created from an antique Austrian wagon wheel and shed antlers found on the ranch. Down the hall are 3 bedrooms with connected bathrooms, 2 with walk-in closets. Beyond is the formal living room with wood floors, custom rock walls, a wood stove, and large windows that allow magnificent views of the property in the comfort of your easy chair. The second floor has a balcony that overlooks the great room and a bedroom with a connected bathroom. Outside a custom rock fireplace and a scoria water feature sit on the patio, surrounded by an immaculate yard. The shop, 36X60, has a unique style canopies supported by pine posts harvested from the property, simulating a filling station. The building has large double doors for easy access and an office area with a wood stove and a sink. Also built from lumber harvested from the ranch is a unique one bedroom, one bath guest cabin.

A couple of extra fun details are the 4 hole golf course, and an open field south of the house that could be converted into your own private runway. Brokers opinion. This is a property you need to look at in person, words can't describe the effort that has been put into the land, the home, and the outbuildings.

Logan Todd
(406) 930-3673

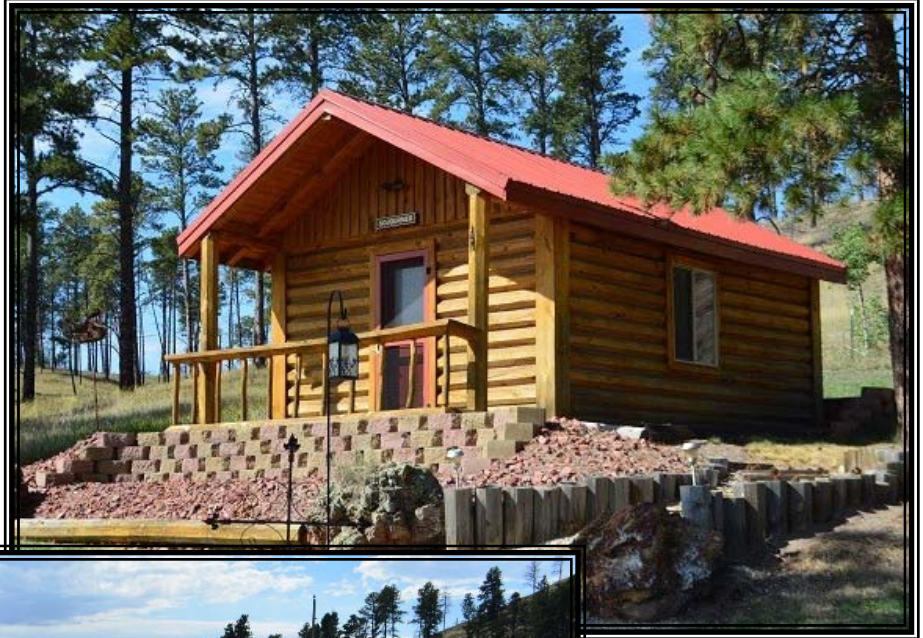


DESCRIPTION:

Acreage:

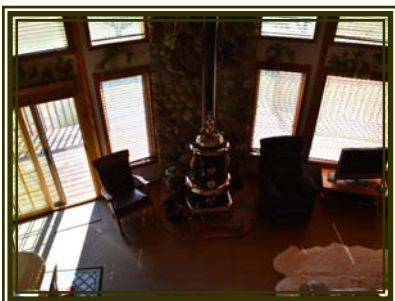
220 +/- Acres

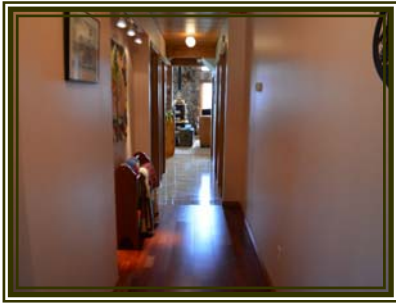
Taxes: \$488

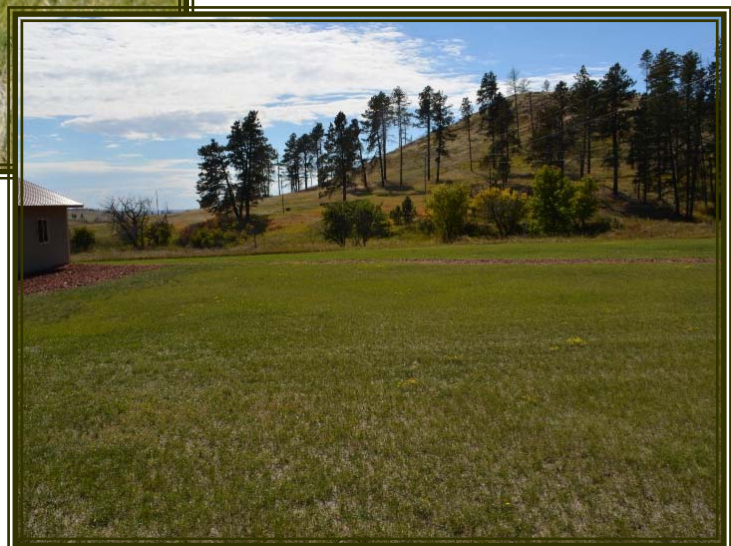
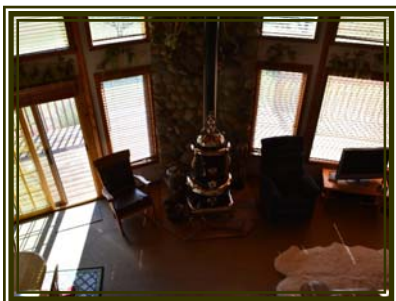
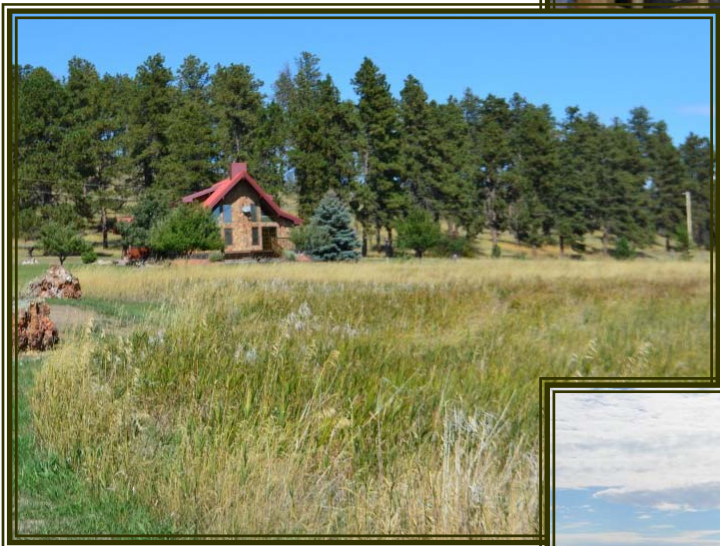


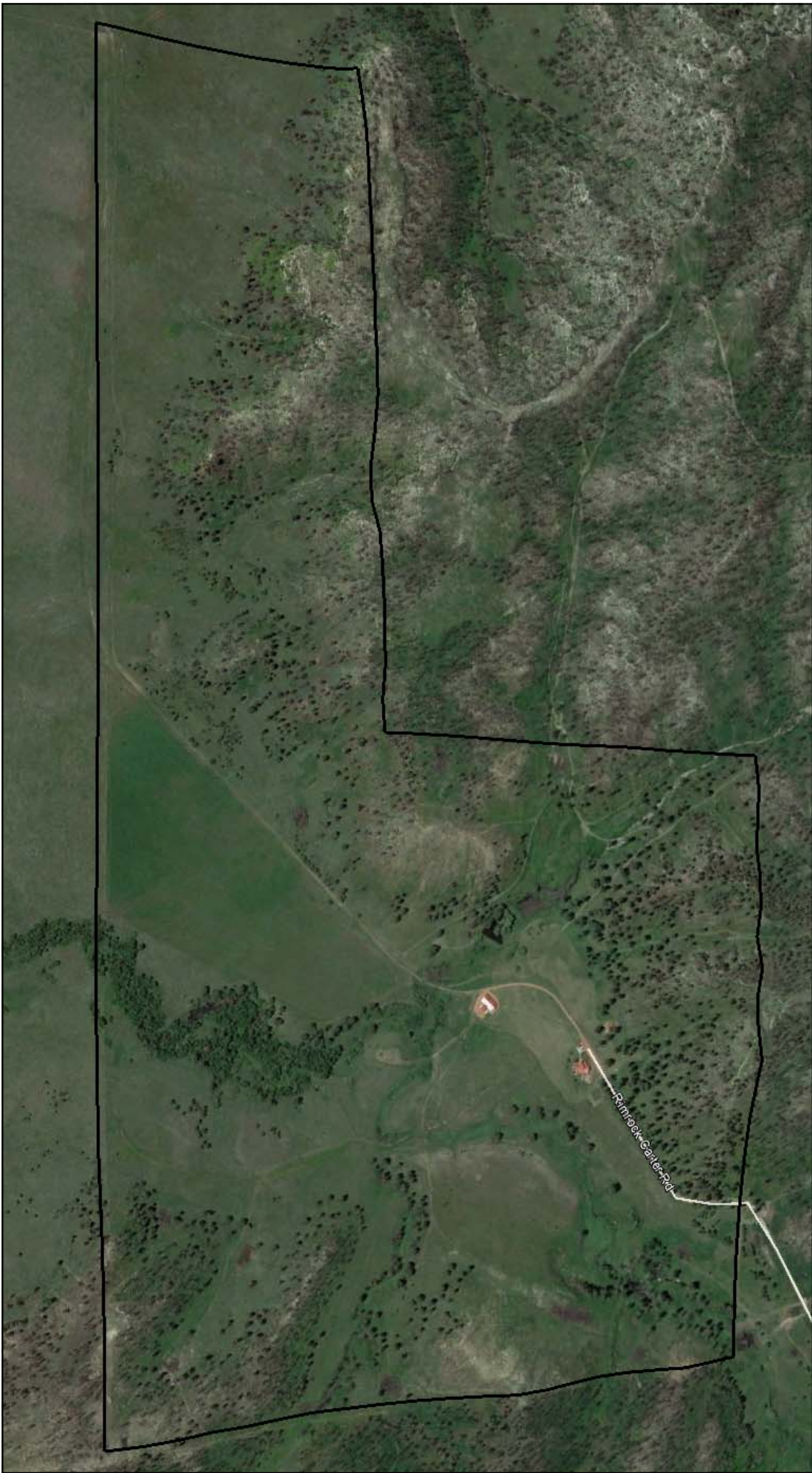
Water & Mineral Rights:

Owners will convey all owned mineral rights and all water rights appurtenant to Rimrock Ranch. Water Rights shall transfer subject to all decisions of the Montana Water Court Adjudication proceedings.









Montana "The Best Last Place."

