

For Sale
+/- 42.99 Acres
Commercial Land

550 Dailey Mill Road
McDonough, GA 30253



KW Commercial Peachtree Road
804 Town Boulevard ■ Suite A2040 ■ Atlanta, GA 30319
Tel: (404) 419-3500 ■ Fax: 770.448.6339

Jay Leslie

404.277.9191

jleslie@atlantalandgroup.com

Pete Galbiati

404.374.6499

pgalbiati@atlantalandgroup.com

Each KW Commercial office is independently owned and operated. Information believed accurate, but not warranted. Offer subject to errors, emissions and withdrawals. Equal housing opportunity.

Property Description

Property Size: +/- 42.99 acres

Location: 550 Dailey Mill Road, McDonough, GA 30253

Zoning: S F Residential (0100)

Price: \$1,200,000 or \$27,914/acre

Summary: The subject property is located in the I-75 corridor. The site is in a residential area with several restaurants and retailers represented in the submarket.



KW Commercial Peachtree Road
804 Town Boulevard ■ Suite A2040 ■ Atlanta, GA 30319
Tel: (404) 419-3500 ■ Fax: 770.448.6339

Jay Leslie
404.277.9191

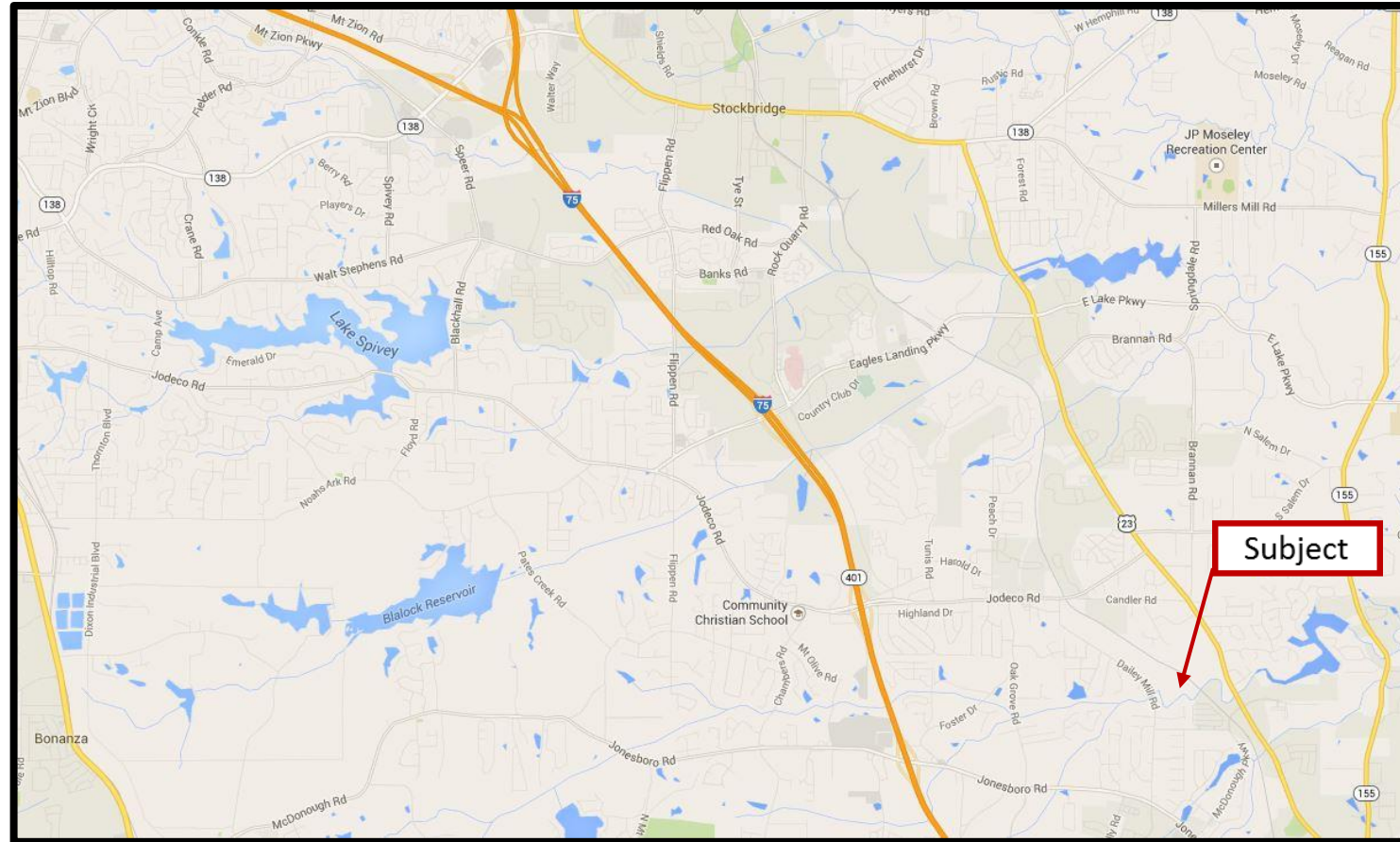
jleslie@atlantalandgroup.com

Pete Galbiati
404.374.6499

pgalbiati@atlantalandgroup.com

Each KW Commercial office is independently owned and operated. Information believed accurate, but not warranted. Offer subject to errors, emissions and withdrawals. Equal housing opportunity.

Location Map



KW Commercial Peachtree Road
804 Town Boulevard ■ Suite A2040 ■ Atlanta, GA 30319
Tel: (404) 419-3500 ■ Fax: 770.448.6339

Each KW Commercial office is independently owned and operated. Information believed accurate, but not warranted. Offer subject to errors, emissions and withdrawals. Equal housing opportunity.

Jay Leslie

404.277.9191

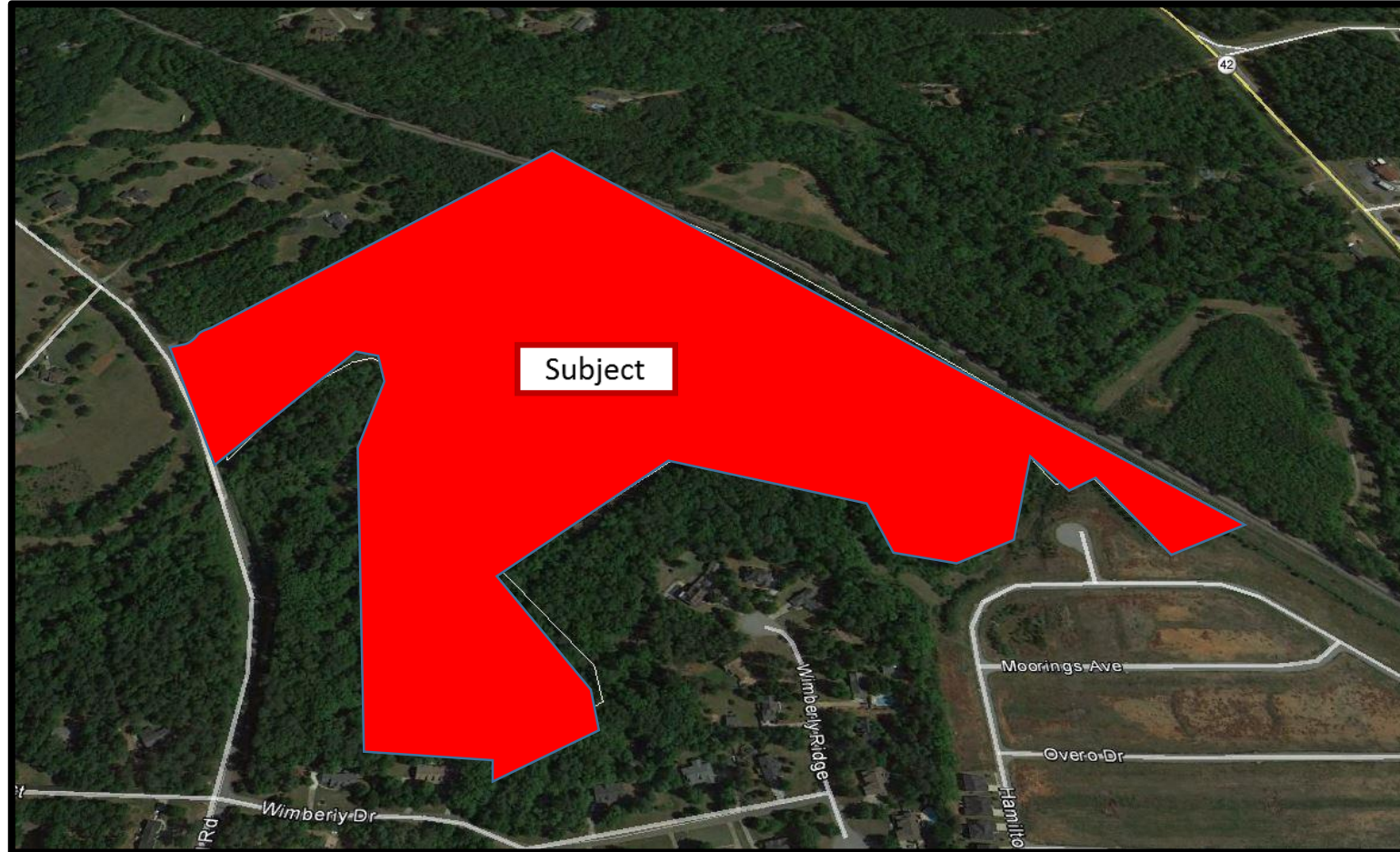
jleslie@atlantalandgroup.com

Pete Galbiati

404.374.6499

pgalbiati@atlantalandgroup.com

Aerial Photograph



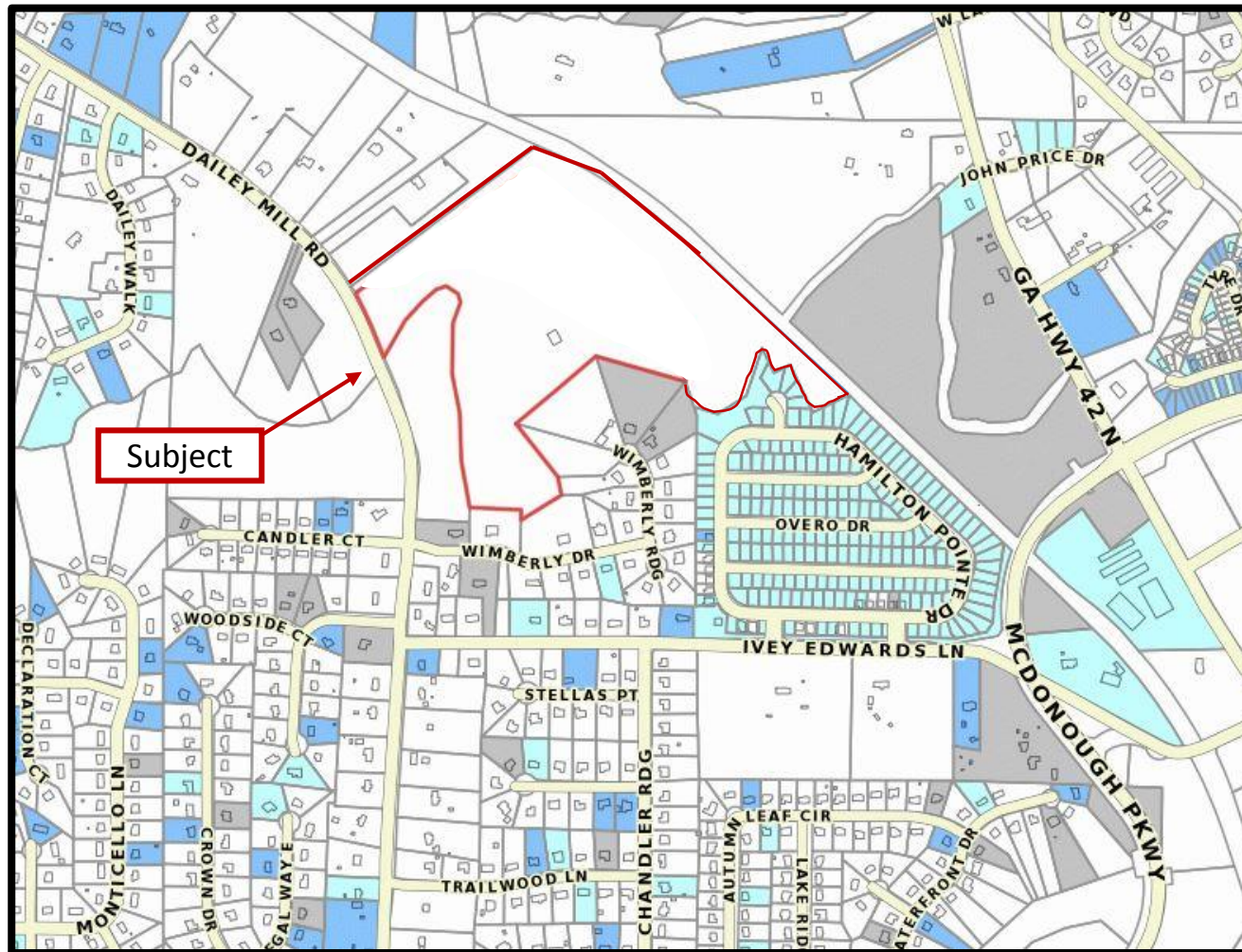
KW Commercial Peachtree Road
804 Town Boulevard ■ Suite A2040 ■ Atlanta, GA 30319
Tel: (404) 419-3500 ■ Fax: 770.448.6339

Jay Leslie
404.277.9191
jleslie@atlantalandgroup.com

Pete Galbiati
404.374.6499
pgalbiati@atlantalandgroup.com

Each KW Commercial office is independently owned and operated. Information believed accurate, but not warranted. Offer subject to errors, emissions and withdrawals. Equal housing opportunity.

Tax Plat



KW Commercial Peachtree Road
804 Town Boulevard ■ Suite A2040 ■ Atlanta, GA 30319
Tel: (404) 419-3500 ■ Fax: 770.448.6339

Each KW Commercial office is independently owned and operated. Information believed accurate, but not warranted. Offer subject to errors, emissions and withdrawals. Equal housing opportunity.

Jay Leslie

404.277.9191

jleslie@atlantalandgroup.com

Pete Galbiati

404.374.6499

pgalbiati@atlantalandgroup.com