

# FOR SALE - 156.21 AC (WILL DIVIDE)

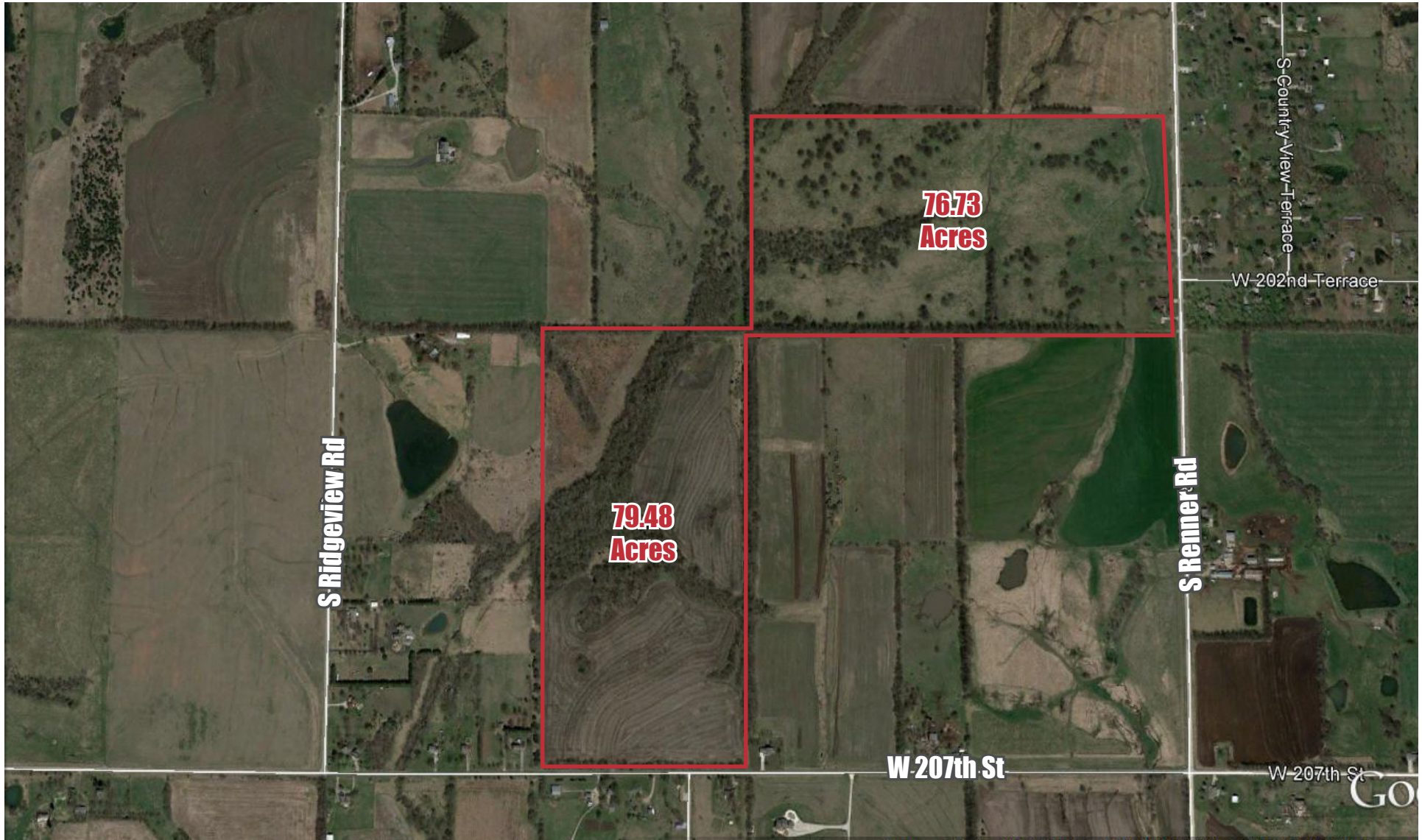
W 207TH ST & S RIDGEVIEW RD, SPRING HILL, KANSAS



**REECE**

COMMERCIAL REAL ESTATE

a Berkshire Hathaway Affiliate



**JIB FELTER**

(913) 333-7830

jib.felter@reececommercial.com

**DICK STEPHENS**

(913) 491-3366

ds@reececommercial.com

*Selling Land & Farms Since 1976*

# W 207TH & S RIDGEVIEW RD

|                        |  |
|------------------------|--|
| <b>LOCATION</b>        | Approximately 76.73 acres on the west side of Renner Rd, 1/4 mile south of 199th St and approximately 79.48 acres on the north side of 207th St. 1/2 Mile west of Renner Rd. The two properties abut each other at the center of the section |
| <b>ACRES</b>           | Approximately 156.21 acres   |
| <b>SEPARATE TRACTS</b> | Seller will sell the 76.73 acre and 79.48 acre tracts individually   |
| <b>PRICE</b>           | \$3,436,620 (\$22,000/acre) 76.73 acre tract: \$1,688,060 and 79.48 acre tract: \$1,748,560  |
| <b>USAGE</b>           | Master planned for multi-use residential   |
| <b>UTILITIES</b>       | Sanitary sewers run through the property (see attached sewer map)  |
| <b>SCHOOLS</b>         | In the Spring Hill school district. The high school is located on the north side of 199th St   |
| <b>TAXES</b>           | 2015 Taxes were 28,651.79 including the sewer special assessment. See attached tax statements. The specials pay off in 2027.   |
| <b>TOPOGRAPHY</b>      | See attached topography map  |
| <b>FLOOD PLAIN</b>     | See attached flood plain map   |

The information in this package has been obtained from sources believed reliable. While we do not doubt its accuracy we have not verified it and make no guarantee, warranty or representation about it. It is your responsibility to independently confirm its accuracy and completeness. Any projections, opinions, assumptions, or estimates used are for example only and do not represent the current or future performance of the property. You and your advisors should conduct a careful, independent investigation of the property to determine to your satisfaction the suitability of the property for your needs. © 2016

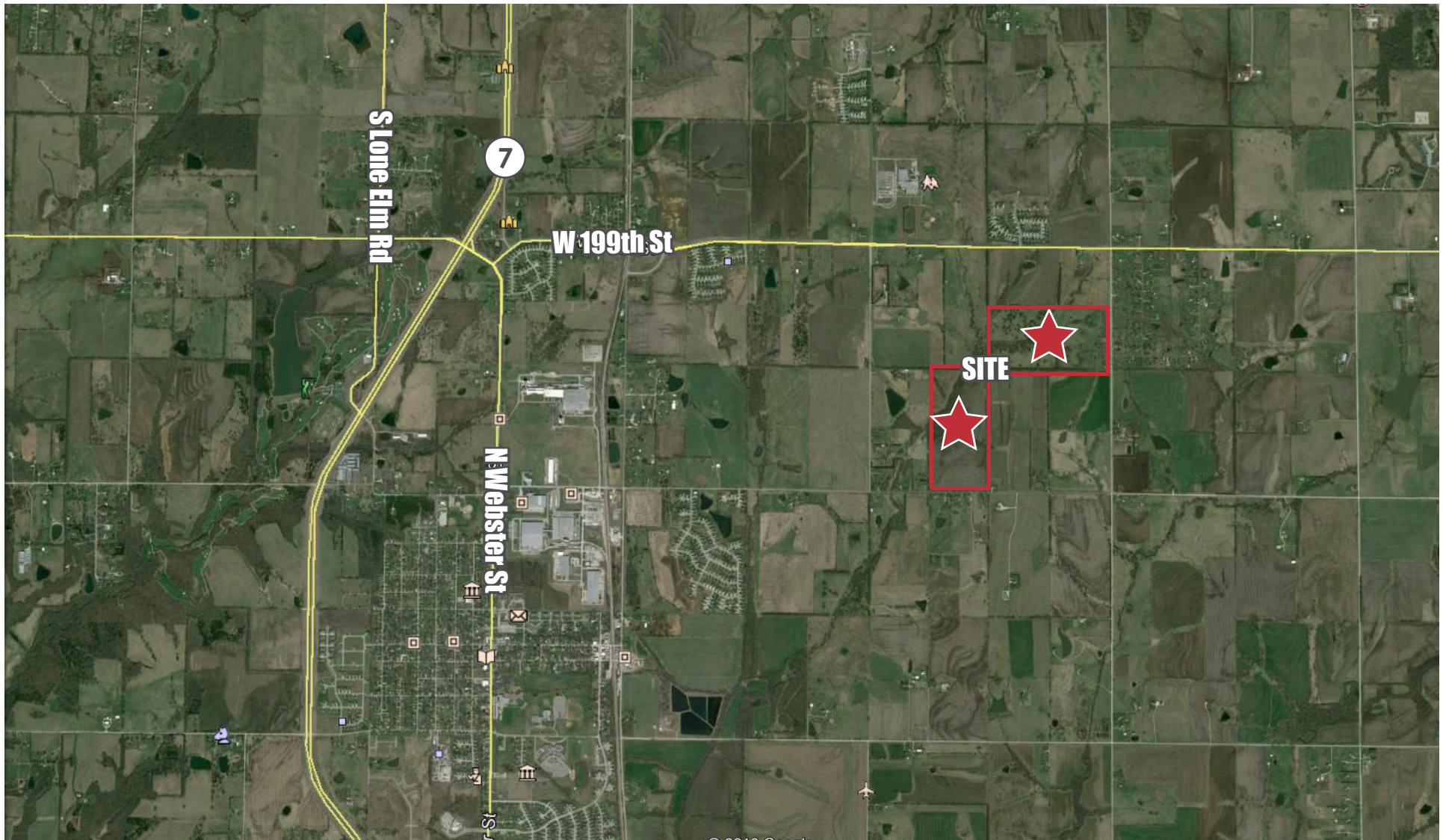


**REECE**  
COMMERCIAL REAL ESTATE  
a Berkshire Hathaway Affiliate



# AERIAL

## MAPS

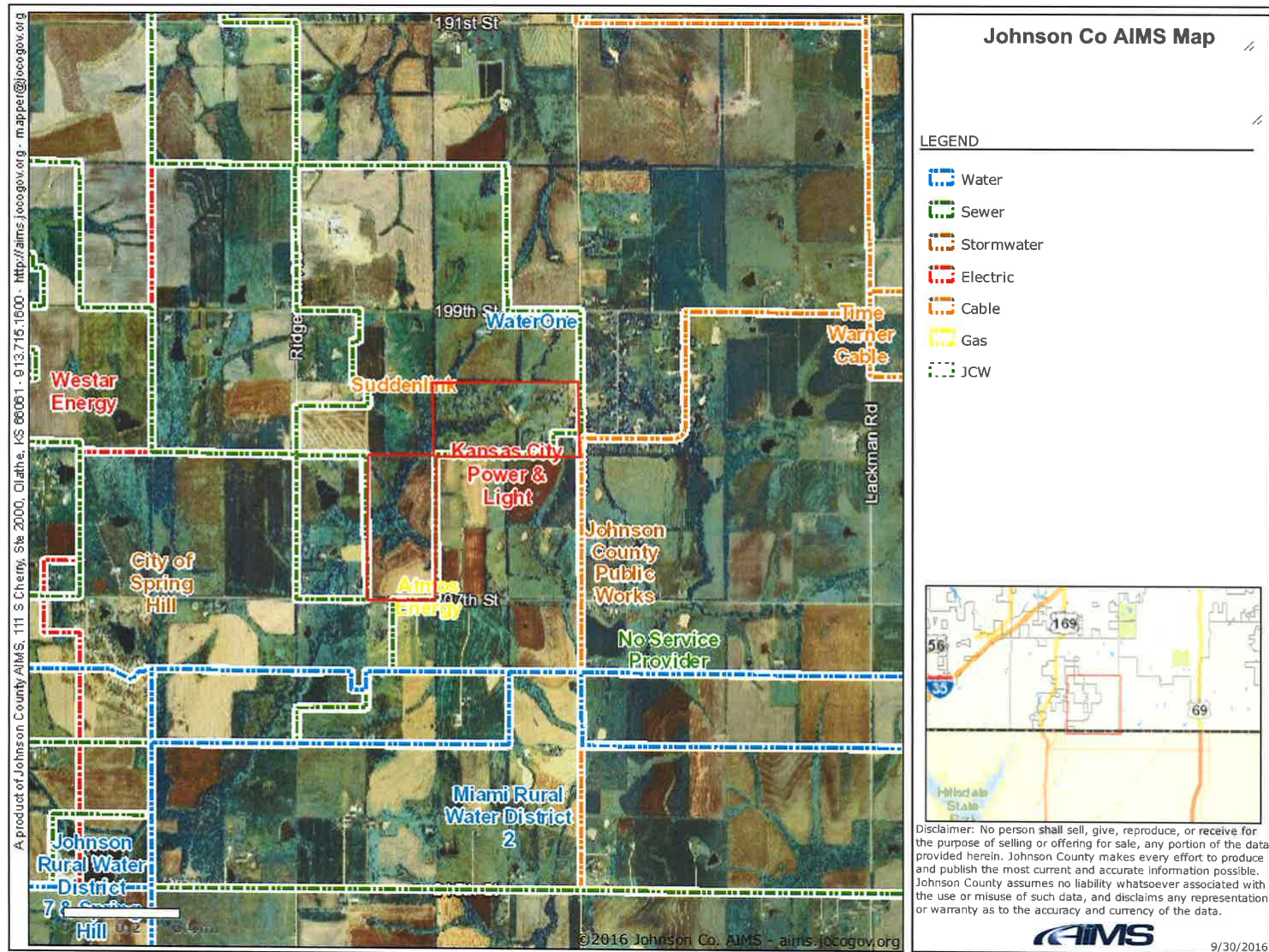


The information in this package has been obtained from sources believed reliable. While we do not doubt its accuracy we have not verified it and make no guarantee, warranty or representation about it. It is your responsibility to independently confirm its accuracy and completeness. Any projections, opinions, assumptions, or estimates used are for example only and do not represent the current or future performance of the property. You and your advisors should conduct a careful, independent investigation of the property to determine to your satisfaction the suitability of the property for your needs. © 2016



# UTILITY MAP

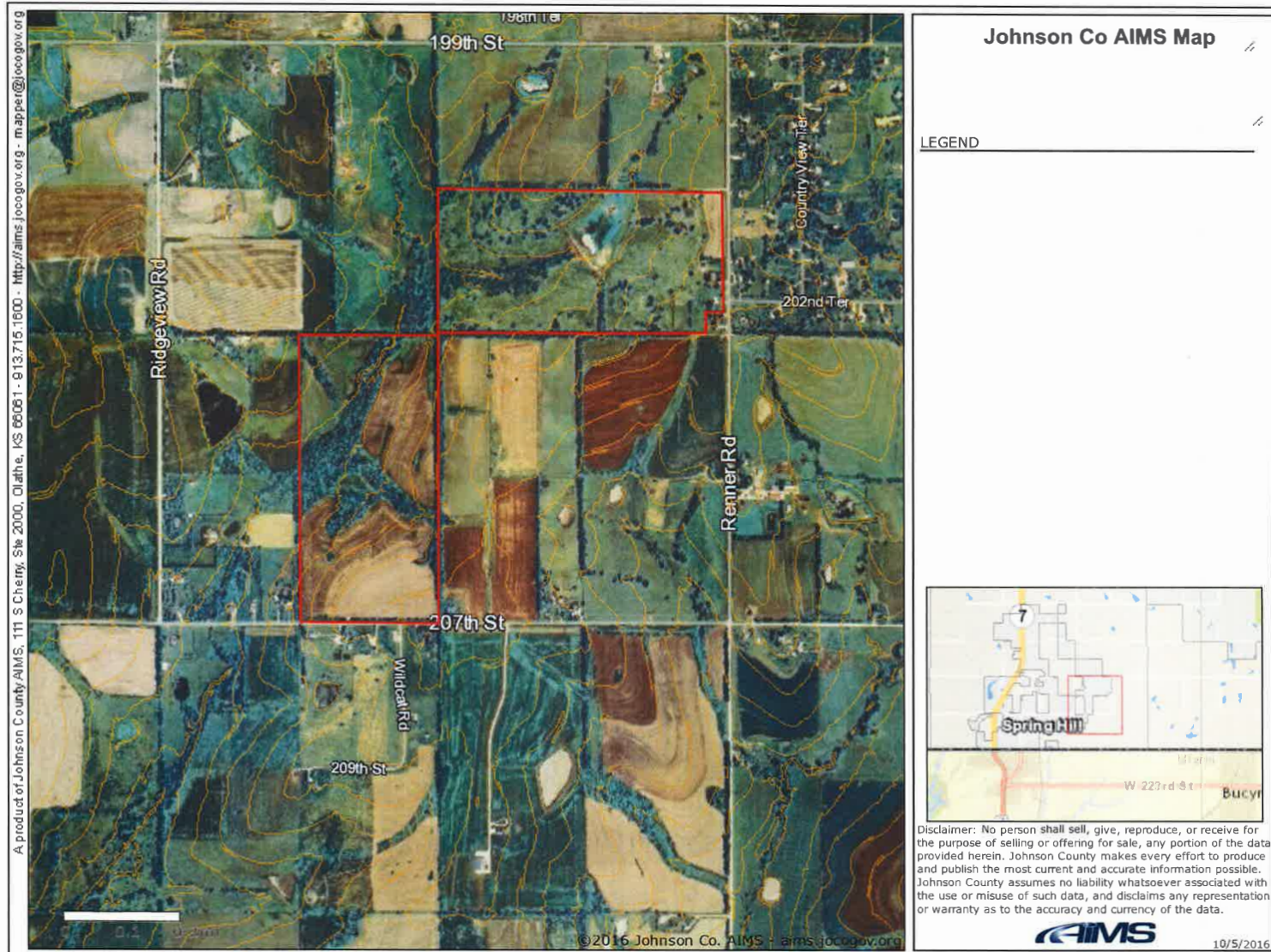
## MAPS



The information in this package has been obtained from sources believed reliable. While we do not doubt its accuracy we have not verified it and make no guarantee, warranty or representation about it. It is your responsibility to independently confirm its accuracy and completeness. Any projections, opinions, assumptions, or estimates used are for example only and do not represent the current or future performance of the property. You and your advisors should conduct a careful, independent investigation of the property to determine to your satisfaction the suitability of the property for your needs. © 2016



# TOPOGRAPHY MAP

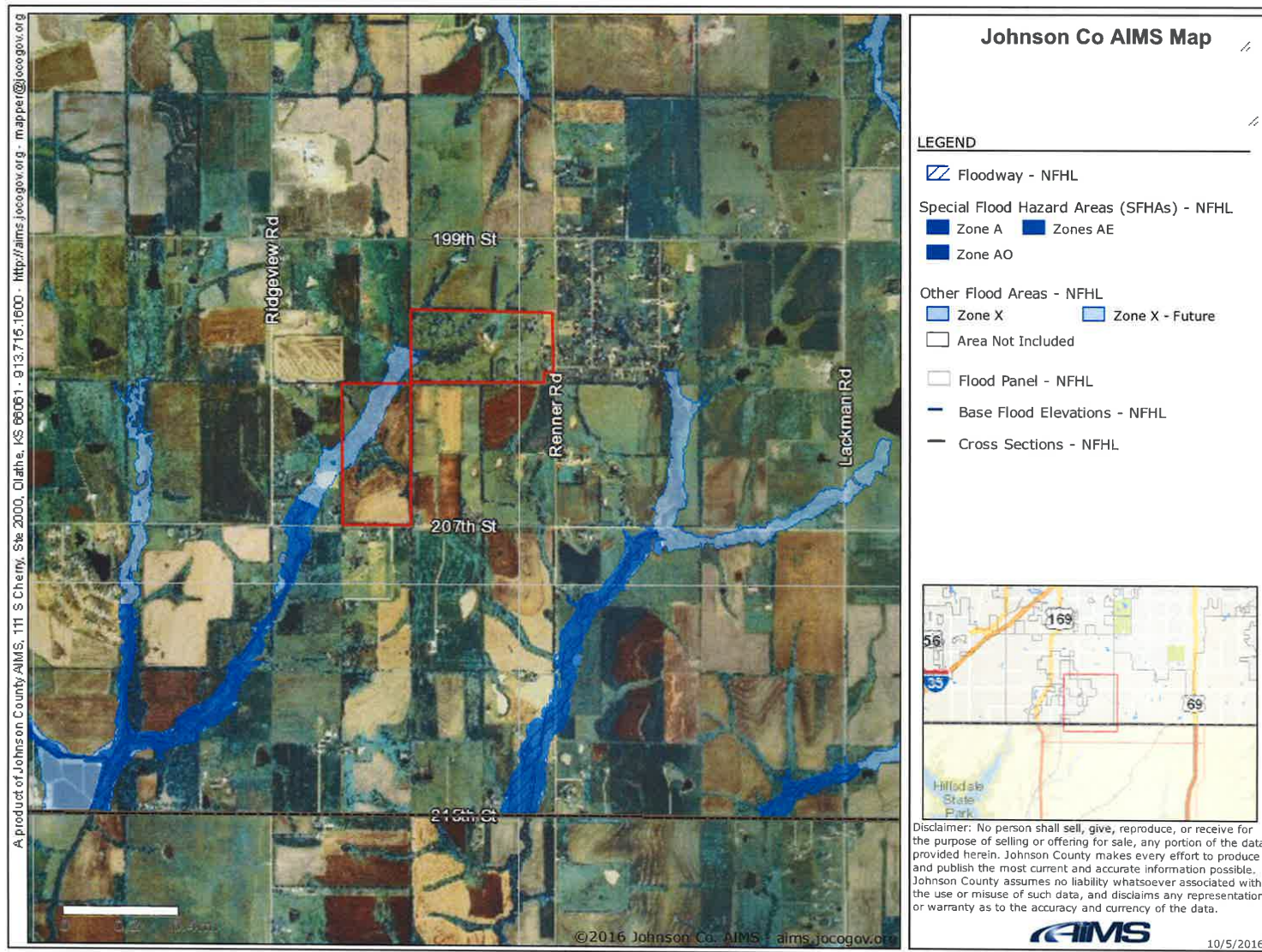


The information in this package has been obtained from sources believed reliable. While we do not doubt its accuracy we have not verified it and make no guarantee, warranty or representation about it. It is your responsibility to independently confirm its accuracy and completeness. Any projections, opinions, assumptions, or estimates used are for example only and do not represent the current or future performance of the property. You and your advisors should conduct a careful, independent investigation of the property to determine to your satisfaction the suitability of the property for your needs. © 2016



# FLOOD PLAIN MAP

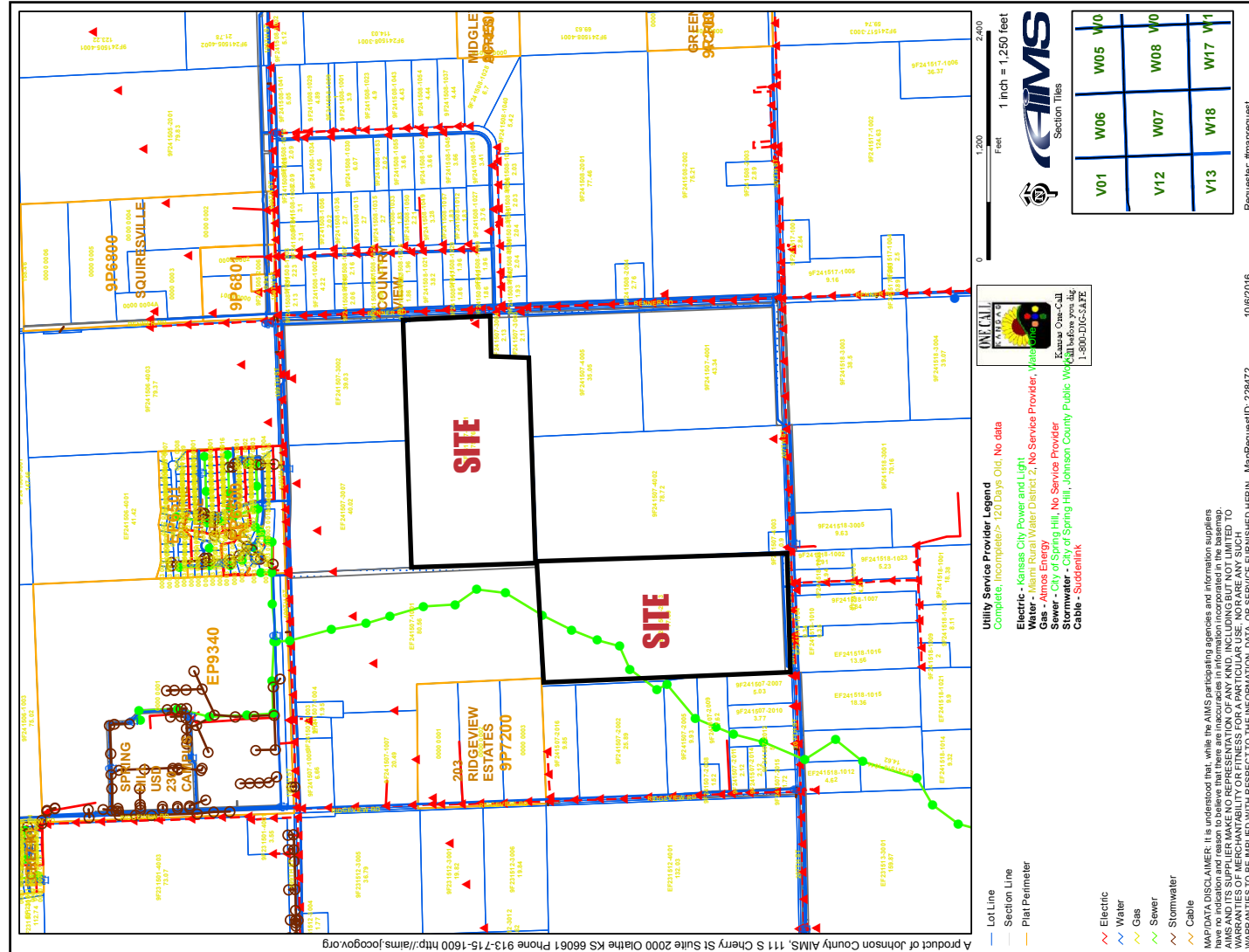
## MAPS



The information in this package has been obtained from sources believed reliable. While we do not doubt its accuracy we have not verified it and make no guarantee, warranty or representation about it. It is your responsibility to independently confirm its accuracy and completeness. Any projections, opinions, assumptions, or estimates used are for example only and do not represent the current or future performance of the property. You and your advisors should conduct a careful, independent investigation of the property to determine to your satisfaction the suitability of the property for your needs. © 2016

# SEWER MAP

MAPS



The information in this package has been obtained from sources believed reliable. While we do not doubt its accuracy we have not verified it and make no guarantee, warranty or representation about it. It is your responsibility to independently confirm its accuracy and completeness. Any projections, opinions, assumptions, or estimates used are for example only and do not represent the current or future performance of the property. You and your advisors should conduct a careful, independent investigation of the property to determine to your satisfaction the suitability of the property for your needs. © 2016



**REECE**  
 COMMERCIAL REAL ESTATE  
 a Berkshire Hathaway Affiliate

# TAX BILL



Jobs Contact Departments Employees Media County Facilities Maps



## Treasury and Financial Management

Home » Treasury and Financial Management » Real & Personal Property Taxes » RE Tax Bill

**THE ACCOUNT DETAILS AND TAX BILL ARE UPDATED NIGHTLY.**

**INFORMATIONAL PURPOSES ONLY-THIS IS NOT A TAX BILL**

[Printer Friendly](#)

### REAL ESTATE DETAIL

|                  |               |                 |         |            |
|------------------|---------------|-----------------|---------|------------|
| Property Number: | EF241507-2003 | Tax Authority   | Rate    | Tax Amount |
| Bill Number:     | 11152317914   | STATE OF KS     | 1.5000  | 10.29      |
| Location:        | 0 NS          | JOHNSON CO      | 19.5820 | 134.22     |
|                  |               | COMM CLGE       | 9.4690  | 64.90      |
| Tax District:    | 0424          | JO CO PARK      | 3.1010  | 21.27      |
|                  |               | SP HILL N/F     | 26.5620 | 182.08     |
|                  |               | SP TWP GEN      | .00     | .00        |
| Half Tax:        | \$6,835.55    | 230 UNIFIED     | 27.5950 | 189.16     |
|                  |               | 230 SCH GEN     | 20.0000 | 137.10     |
| Full Tax:        | \$13,671.09   | 230 BOND        | 16.5410 | 113.39     |
|                  |               | SP HILL RC      | 3.0510  | 20.91      |
|                  |               | JO CO FIR #2    | 18.6040 | 127.54     |
|                  |               | JO CO LIB       | 3.9120  | 26.81      |
|                  |               | 275 SPCNSTDIST1 |         | 4,779.02   |
|                  |               | 276 SPCNSTDIST2 |         | 7,864.40   |

### TAX SUMMARY

|              |        |             |             |
|--------------|--------|-------------|-------------|
| TAX YEAR     | 2015   | AMOUNT PAID | \$13,671.09 |
| HALF DUE     | \$0.00 | FULL DUE    | \$0.00      |
| INTEREST DUE | \$0.00 | FEES DUE    | \$0.00      |

### PRINT YOUR TAX BILL ONLINE!

[View eBill](#) Click here to generate a printable bill.

## PAYMENT HISTORY

|            |             |                               |
|------------|-------------|-------------------------------|
| Date Paid  | Amount Paid | Receipt                       |
| 11/30/2015 | \$13,671.09 | <a href="#">View eReceipt</a> |

### LEGAL DESCRIPTION

7-15-24 E1/2 SW 1/4 77  
ACRES  
SPC 245

### PAY YOUR BILL ONLINE!

### ASSESSED VALUES

|       |       |             |
|-------|-------|-------------|
| Class | Land  | Improvement |
| A     | 6,855 |             |

[Search Again](#) | [View Appraisal Information](#) | [View Map](#) | [Mortgage Company/Taxing Service Information](#)

If paying delinquent (after Dec 20 or May 10) you will need pay the interest due on your account. **Amounts good thru today only.**  
If you need a future interest date, please contact the Treasurer's Office at 913-715-2600 or **print your bill on the day you will be making payment.**

**PAYMENTS WILL BE RETURNED IF THERE IS NOT ENOUGH INTEREST INCLUDED.**



<http://taxbill.jocogov.org/reltaxbill.aspx?parcelID=EF241507-2003%20%20%20%20&taxYear=2015>

The information in this package has been obtained from sources believed reliable. While we do not doubt its accuracy we have not verified it and make no guarantee, warranty or representation about it. It is your responsibility to independently confirm its accuracy and completeness. Any projections, opinions, assumptions, or estimates used are for example only and do not represent the current or future performance of the property. You and your advisors should conduct a careful, independent investigation of the property to determine to your satisfaction the suitability of the property for your needs. © 2016



**REECE**  
COMMERCIAL REAL ESTATE  
a Berkshire Hathaway Affiliate



# TAX RECORDS

## TAXES

### City of Spring Hill North Benefit District 1 Current Repayment Schedule

**Property ID:** EF24150720-03  
**Property Owner:** No Owner on Record

**Account ID:** EF24150720-03  
**Assessment ID:**

| Bill Date           | Interest Rate | Balance            | Principal          | Interest      | Other              | Total      | Status   |
|---------------------|---------------|--------------------|--------------------|---------------|--------------------|------------|----------|
| 08/25/2008          | 3.2500%       | \$62,042.00        | \$1,613.81         | \$3,093.30    | (\$134.07)         | \$4,573.04 | Billed   |
| 08/25/2009          | 3.2500        | 60,428.19          | 2,331.06           | 2,422.19      | 134.09             | 4,887.34   | Billed   |
| 08/25/2010          | 3.2500        | 58,097.13          | 2,510.37           | 2,346.43      | 0.00               | 4,856.80   | Billed   |
| 08/25/2011          | 3.5000        | 55,586.76          | 2,510.37           | 2,264.85      | 0.00               | 4,775.22   | Billed   |
| 08/25/2012          | 3.5000        | 53,076.39          | 2,331.06           | 2,176.98      | 0.00               | 4,508.04   | Billed   |
| 08/25/2013          | 3.5000        | 50,745.33          | 2,510.37           | 2,095.40      | 0.01               | 4,605.78   | Billed   |
| 08/25/2014          | 3.6250        | 48,234.96          | 2,689.68           | 2,007.53      | 0.01               | 4,697.22   | Billed   |
| 08/25/2015          | 3.7500        | 45,545.28          | 2,868.99           | 1,910.03      | 0.00               | 4,779.02   | Billed   |
| 08/25/2016          | 5.0000        | 42,676.29          | 2,868.99           | 1,802.45      | 0.00               | 4,671.44   | Billed   |
| 08/25/2017          | 5.0000        | 39,807.30          | 2,868.99           | 1,659.00      | 0.00               | 4,527.99   | Unbilled |
| 08/25/2018          | 4.0000        | 36,938.31          | 3,048.31           | 1,515.55      | 0.00               | 4,563.86   | Unbilled |
| 08/25/2019          | 4.0000        | 33,890.00          | 3,048.31           | 1,393.61      | 0.00               | 4,441.92   | Unbilled |
| 08/25/2020          | 4.0000        | 30,841.69          | 3,227.62           | 1,271.68      | 0.00               | 4,499.30   | Unbilled |
| 08/25/2021          | 4.0000        | 27,614.07          | 3,406.93           | 1,142.58      | 0.00               | 4,549.51   | Unbilled |
| 08/25/2022          | 4.0000        | 24,207.14          | 3,586.24           | 1,006.30      | 0.00               | 4,592.54   | Unbilled |
| 08/25/2023          | 4.1000        | 20,620.90          | 3,765.56           | 862.85        | 0.00               | 4,628.41   | Unbilled |
| 08/25/2024          | 4.1000        | 16,855.34          | 3,944.87           | 708.46        | 0.00               | 4,653.33   | Unbilled |
| 08/25/2025          | 4.2000        | 12,910.47          | 4,124.18           | 546.72        | 0.00               | 4,670.90   | Unbilled |
| 08/25/2026          | 4.2000        | 8,786.29           | 4,303.49           | 373.51        | 0.00               | 4,677.00   | Unbilled |
| 08/25/2027          | 4.3000        | 4,482.80           | 4,482.80           | 192.76        | 0.00               | 4,675.56   | Unbilled |
| <b>Grand Total:</b> |               | <b>\$62,042.00</b> | <b>\$30,792.18</b> | <b>\$0.04</b> | <b>\$92,834.22</b> |            |          |

The information in this package has been obtained from sources believed reliable. While we do not doubt its accuracy we have not verified it and make no guarantee, warranty or representation about it. It is your responsibility to independently confirm its accuracy and completeness. Any projections, opinions, assumptions, or estimates used are for example only and do not represent the current or future performance of the property. You and your advisors should conduct a careful, independent investigation of the property to determine to your satisfaction the suitability of the property for your needs. © 2016



**REECE**  
COMMERCIAL REAL ESTATE  
a Berkshire Hathaway Affiliate

## TAX RECORDS

**City of Spring Hill**  
**North Benefit District 2**  
**Current Repayment Schedule**

**Property ID:** EF24150720-03  
**Property Owner:** No Owner on Record

**Account ID:** EF24150720-03XX  
**Assessment ID:**

| Bill Date           | Interest Rate | Balance     | Principal          | Interest           | Other         | Total               | Status   |
|---------------------|---------------|-------------|--------------------|--------------------|---------------|---------------------|----------|
| 08/25/2008          | 3.2500%       | \$97,121.41 | \$1,952.19         | \$4,839.45         | \$343.66      | \$7,135.30          | Billed   |
| 08/25/2009          | 3.2500        | 95,169.22   | 3,416.33           | 3,808.11           | -343.60       | 6,880.84            | Billed   |
| 08/25/2010          | 3.2500        | 91,752.89   | 3,904.38           | 3,697.08           | 0.00          | 7,601.46            | Billed   |
| 08/25/2011          | 3.5000        | 87,848.51   | 3,904.38           | 3,570.19           | 0.01          | 7,474.58            | Billed   |
| 08/25/2012          | 3.5000        | 83,944.13   | 4,392.43           | 3,433.54           | 0.01          | 7,825.98            | Billed   |
| 08/25/2013          | 3.5000        | 79,551.70   | 3,904.38           | 3,279.80           | 0.00          | 7,184.18            | Billed   |
| 08/25/2014          | 3.6250        | 75,647.32   | 4,392.43           | 3,143.15           | 0.00          | 7,535.58            | Billed   |
| 08/25/2015          | 3.7500        | 71,254.89   | 4,880.47           | 2,983.92           | 0.01          | 7,864.40            | Billed   |
| 08/25/2016          | 5.0000        | 66,374.42   | 4,392.42           | 2,800.90           | 0.00          | 7,193.32            | Billed   |
| 08/25/2017          | 5.0000        | 61,982.00   | 4,392.43           | 2,581.28           | 0.00          | 6,973.71            | Unbilled |
| 08/25/2018          | 4.0000        | 57,589.57   | 4,880.47           | 2,361.66           | 0.00          | 7,242.13            | Unbilled |
| 08/25/2019          | 4.0000        | 52,709.10   | 4,392.42           | 2,166.44           | 0.00          | 6,558.86            | Unbilled |
| 08/25/2020          | 4.0000        | 48,316.68   | 5,368.52           | 1,990.74           | 0.00          | 7,359.26            | Unbilled |
| 08/25/2021          | 4.0000        | 42,948.16   | 5,368.52           | 1,776.00           | 0.00          | 7,144.52            | Unbilled |
| 08/25/2022          | 4.0000        | 37,579.64   | 5,856.57           | 1,561.26           | 0.00          | 7,417.83            | Unbilled |
| 08/25/2023          | 4.1000        | 31,723.07   | 5,856.57           | 1,327.00           | 0.00          | 7,183.57            | Unbilled |
| 08/25/2024          | 4.1000        | 25,866.50   | 6,344.61           | 1,086.88           | 0.00          | 7,431.49            | Unbilled |
| 08/25/2025          | 4.2000        | 19,521.89   | 6,344.61           | 826.75             | 0.00          | 7,171.36            | Unbilled |
| 08/25/2026          | 4.2000        | 13,177.28   | 6,344.62           | 560.28             | 0.00          | 6,904.90            | Unbilled |
| 08/25/2027          | 4.3000        | 6,832.66    | 6,832.66           | 293.80             | 0.00          | 7,126.46            | Unbilled |
| <b>Grand Total:</b> |               |             | <b>\$97,121.41</b> | <b>\$48,088.23</b> | <b>\$0.09</b> | <b>\$145,209.73</b> |          |

The information in this package has been obtained from sources believed reliable. While we do not doubt its accuracy we have not verified it and make no guarantee, warranty or representation about it. It is your responsibility to independently confirm its accuracy and completeness. Any projections, opinions, assumptions, or estimates used are for example only and do not represent the current or future performance of the property. You and your advisors should conduct a careful, independent investigation of the property to determine to your satisfaction the suitability of the property for your needs. © 2016



**REECE**  
 COMMERCIAL REAL ESTATE  
a Berkshire Hathaway Affiliate



# TAX BILL

10/5/2016

RE Tax Bill



Menu

Jobs Contact Departments Employees Media County Facilities Maps



## Treasury and Financial Management

Home » Treasury and Financial Management » Real & Personal Property Taxes » RE Tax Bill

**THE ACCOUNT DETAILS AND TAX BILL ARE UPDATED NIGHTLY.**

**INFORMATIONAL PURPOSES ONLY-THIS IS NOT A TAX BILL**

Printer Friendly

### REAL ESTATE DETAIL

Property Number: EF241507-3001  
Bill Number: 11152317906  
Location: 20170 RENNER  
Tax District: 0424  
Half Tax: \$7,490.35  
Full Tax: \$14,980.70

### MILL LEVIES

| Tax Authority  | Rate    | Tax Amount |
|----------------|---------|------------|
| STATE OF KS    | 1.5000  | 25.35      |
| JOHNSON CO     | 19.5820 | 330.92     |
| COMM CLGE      | 9.4690  | 160.02     |
| JO CO PARK     | 3.1010  | 52.41      |
| SP HILL N/F    | 26.5620 | 448.88     |
| SP TMP GEN     |         | .00        |
| 230 UNIFIED    | 27.5950 | 466.33     |
| 230 SCH GEN    | 20.0000 | 291.98*    |
| 230 BOND       | 16.5410 | 279.53     |
| SP HILL RC     | 3.0510  | 51.56      |
| JO CO FIR #2   | 18.6040 | 314.39     |
| JO CO LIB      | 3.9120  | 66.11      |
| 275 SPONSDIST1 |         | 4,722.26   |
| 276 SPONSDIST2 |         | 7,770.96   |

\* TAX CALCULATED ON  
APPRAISED VALUE LESS \$20,000.

### TAX SUMMARY

|              |        |             |             |
|--------------|--------|-------------|-------------|
| TAX YEAR     | 2015   | AMOUNT PAID | \$14,980.70 |
| HALF DUE     | \$0.00 | FULL DUE    | \$0.00      |
| INTEREST DUE | \$0.00 | FEES DUE    | \$0.00      |

### PAYMENT HISTORY

| Date Paid  | Amount Paid | Receipt                       |
|------------|-------------|-------------------------------|
| 11/30/2015 | \$14,980.70 | <a href="#">View eReceipt</a> |

**PRINT YOUR TAX BILL ONLINE!**

[View eBill](#) Click here to generate a printable bill.

### LEGAL DESCRIPTION

7-15-24 NE1/4 EX NE1/4  
NE1/4  
EX NW1/4 NE1/4 EX S 200'  
E  
500' NE1/4 EX 2.3 AC & EX  
.74 AC 74.66 ACS M/L  
SPC 237

**PAY YOUR BILL ONLINE!**

### ASSESSED VALUES

| Class | Land  | Improvement |
|-------|-------|-------------|
| F     | 5,941 | 9,377       |
| A     | 1,581 |             |

[Search Again](#) | [View Appraisal Information](#) | [View Map](#) | [Mortgage Company/Taxing Service Information](#)

<http://taxbill.jocogov.org/reltaxbill.aspx?parcelID=EF241507-3001%20%20%20&taxYear=2015>

1/2

The information in this package has been obtained from sources believed reliable. While we do not doubt its accuracy we have not verified it and make no guarantee, warranty or representation about it. It is your responsibility to independently confirm its accuracy and completeness. Any projections, opinions, assumptions, or estimates used are for example only and do not represent the current or future performance of the property. You and your advisors should conduct a careful, independent investigation of the property to determine to your satisfaction the suitability of the property for your needs. © 2016



**REECE**  
COMMERCIAL REAL ESTATE  
a Berkshire Hathaway Affiliate

# TAX RECORDS

## TAXES

### City of Spring Hill North Benefit District 1 Current Repayment Schedule

**Property ID:** EF24150730-01  
**Property Owner:** No Owner on Record

**Account ID:** EF24150730-01  
**Assessment ID:**

| Bill Date           | Interest Rate | Balance     | Principal          | Interest           | Other         | Total              | Status   |
|---------------------|---------------|-------------|--------------------|--------------------|---------------|--------------------|----------|
| 08/25/2008          | 3.2500%       | \$61,304.96 | \$1,594.64         | \$3,056.56         | (\$132.48)    | \$4,518.72         | Billed   |
| 08/25/2009          | 3.2500        | 59,710.32   | 2,303.37           | 2,393.42           | 132.49        | 4,829.28           | Billed   |
| 08/25/2010          | 3.2500        | 57,406.95   | 2,480.55           | 2,318.56           | 0.01          | 4,799.12           | Billed   |
| 08/25/2011          | 3.5000        | 54,926.40   | 2,480.55           | 2,237.94           | 0.01          | 4,718.50           | Billed   |
| 08/25/2012          | 3.5000        | 52,445.85   | 2,303.37           | 2,151.12           | 0.01          | 4,454.50           | Billed   |
| 08/25/2013          | 3.5000        | 50,142.48   | 2,480.55           | 2,070.50           | 0.01          | 4,551.06           | Billed   |
| 08/25/2014          | 3.6250        | 47,661.93   | 2,657.73           | 1,983.68           | 0.01          | 4,641.42           | Billed   |
| 08/25/2015          | 3.7500        | 45,004.20   | 2,834.91           | 1,887.34           | 0.01          | 4,722.26           | Billed   |
| 08/25/2016          | 5.0000        | 42,169.29   | 2,834.91           | 1,781.03           | 0.00          | 4,615.94           | Billed   |
| 08/25/2017          | 5.0000        | 39,334.38   | 2,834.91           | 1,639.29           | 0.00          | 4,474.20           | Unbilled |
| 08/25/2018          | 4.0000        | 36,499.47   | 3,012.09           | 1,497.54           | 0.00          | 4,509.63           | Unbilled |
| 08/25/2019          | 4.0000        | 33,487.38   | 3,012.09           | 1,377.06           | 0.00          | 4,389.15           | Unbilled |
| 08/25/2020          | 4.0000        | 30,475.29   | 3,189.27           | 1,256.57           | 0.00          | 4,445.84           | Unbilled |
| 08/25/2021          | 4.0000        | 27,286.02   | 3,366.46           | 1,129.00           | 0.00          | 4,495.46           | Unbilled |
| 08/25/2022          | 4.0000        | 23,919.56   | 3,543.64           | 994.34             | 0.00          | 4,537.98           | Unbilled |
| 08/25/2023          | 4.1000        | 20,375.92   | 3,720.82           | 852.60             | 0.00          | 4,573.42           | Unbilled |
| 08/25/2024          | 4.1000        | 16,655.10   | 3,898.00           | 700.05             | 0.00          | 4,598.05           | Unbilled |
| 08/25/2025          | 4.2000        | 12,757.10   | 4,075.18           | 540.23             | 0.00          | 4,615.41           | Unbilled |
| 08/25/2026          | 4.2000        | 8,681.92    | 4,252.37           | 369.07             | 0.00          | 4,621.44           | Unbilled |
| 08/25/2027          | 4.3000        | 4,429.55    | 4,429.55           | 190.47             | 0.00          | 4,620.02           | Unbilled |
| <b>Grand Total:</b> |               |             | <b>\$61,304.96</b> | <b>\$30,426.37</b> | <b>\$0.07</b> | <b>\$91,731.40</b> |          |

The information in this package has been obtained from sources believed reliable. While we do not doubt its accuracy we have not verified it and make no guarantee, warranty or representation about it. It is your responsibility to independently confirm its accuracy and completeness. Any projections, opinions, assumptions, or estimates used are for example only and do not represent the current or future performance of the property. You and your advisors should conduct a careful, independent investigation of the property to determine to your satisfaction the suitability of the property for your needs. © 2016



**REECE**  
COMMERCIAL REAL ESTATE  
a Berkshire Hathaway Affiliate



# TAX RECORDS

## TAXES

### City of Spring Hill North Benefit District 2 Current Repayment Schedule

**Property ID:** EF24150730-01  
**Property Owner:** No Owner on Record

**Account ID:** EF24150730-01XX  
**Assessment ID:**

| Bill Date           | Interest Rate | Balance     | Principal          | Interest           | Other         | Total               | Status   |
|---------------------|---------------|-------------|--------------------|--------------------|---------------|---------------------|----------|
| 08/25/2008          | 3.2500%       | \$95,967.62 | \$1,929.00         | \$4,781.96         | \$339.58      | \$7,050.54          | Billed   |
| 08/25/2009          | 3.2500        | 94,038.62   | 3,375.75           | 3,762.87           | -339.52       | 6,799.10            | Billed   |
| 08/25/2010          | 3.2500        | 90,662.87   | 3,857.99           | 3,653.16           | 0.01          | 7,511.16            | Billed   |
| 08/25/2011          | 3.5000        | 86,804.88   | 3,857.99           | 3,527.78           | 0.01          | 7,385.78            | Billed   |
| 08/25/2012          | 3.5000        | 82,946.89   | 4,340.24           | 3,392.75           | 0.01          | 7,733.00            | Billed   |
| 08/25/2013          | 3.5000        | 78,606.65   | 3,858.00           | 3,240.84           | 0.00          | 7,098.84            | Billed   |
| 08/25/2014          | 3.6250        | 74,748.65   | 4,340.24           | 3,105.81           | 0.01          | 7,446.06            | Billed   |
| 08/25/2015          | 3.7500        | 70,408.41   | 4,822.49           | 2,948.47           | 0.00          | 7,770.96            | Billed   |
| 08/25/2016          | 5.0000        | 65,585.92   | 4,340.24           | 2,767.63           | 0.01          | 7,107.88            | Billed   |
| 08/25/2017          | 5.0000        | 61,245.68   | 4,340.25           | 2,550.62           | 0.00          | 6,890.87            | Unbilled |
| 08/25/2018          | 4.0000        | 56,905.43   | 4,822.49           | 2,333.60           | 0.00          | 7,156.09            | Unbilled |
| 08/25/2019          | 4.0000        | 52,082.94   | 4,340.25           | 2,140.71           | 0.00          | 6,480.96            | Unbilled |
| 08/25/2020          | 4.0000        | 47,742.69   | 5,304.74           | 1,967.10           | 0.00          | 7,271.84            | Unbilled |
| 08/25/2021          | 4.0000        | 42,437.95   | 5,304.74           | 1,754.91           | 0.00          | 7,059.65            | Unbilled |
| 08/25/2022          | 4.0000        | 37,133.21   | 5,786.99           | 1,542.72           | 0.00          | 7,329.71            | Unbilled |
| 08/25/2023          | 4.1000        | 31,346.22   | 5,786.99           | 1,311.24           | 0.00          | 7,098.23            | Unbilled |
| 08/25/2024          | 4.1000        | 25,559.23   | 6,269.25           | 1,073.97           | 0.00          | 7,343.22            | Unbilled |
| 08/25/2025          | 4.2000        | 19,289.98   | 6,269.24           | 816.93             | 0.00          | 7,086.17            | Unbilled |
| 08/25/2026          | 4.2000        | 13,020.74   | 6,269.25           | 553.62             | 0.00          | 6,822.87            | Unbilled |
| 08/25/2027          | 4.3000        | 6,751.49    | 6,751.49           | 290.31             | 0.00          | 7,041.80            | Unbilled |
| <b>Grand Total:</b> |               |             | <b>\$95,967.62</b> | <b>\$47,517.00</b> | <b>\$0.11</b> | <b>\$143,484.73</b> |          |

The information in this package has been obtained from sources believed reliable. While we do not doubt its accuracy we have not verified it and make no guarantee, warranty or representation about it. It is your responsibility to independently confirm its accuracy and completeness. Any projections, opinions, assumptions, or estimates used are for example only and do not represent the current or future performance of the property. You and your advisors should conduct a careful, independent investigation of the property to determine to your satisfaction the suitability of the property for your needs. © 2016



**REECE**  
COMMERCIAL REAL ESTATE  
a Berkshire Hathaway Affiliate