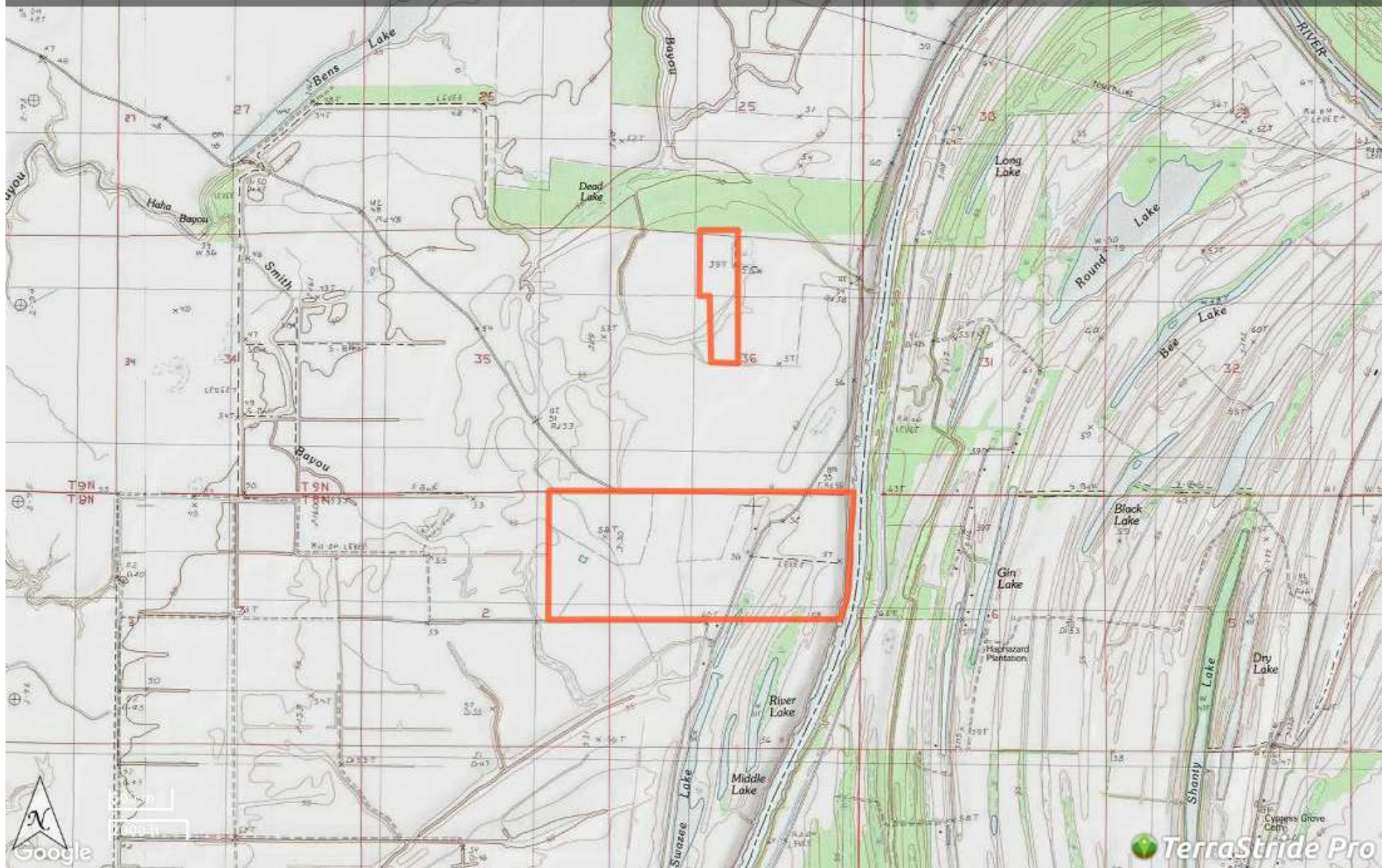




LA - Catahoula McGee 2/3
Undivided Interest / 445 acres
+/-
445.65 acres
\$1,186,500

Brown Realty Co
Brad Brown/Jerry Brown
(318) 680-7809
bbrown@brownrealtyco.com
<http://www.brownrealtyco.com>



Property Report—LA - Catahoula McGee 2/3 Undivided Interest / 445 acres +/-

Legend

Feature	Icon	Colors
Boundary		

Description

This is a good black land farm located at the end of Doughty Rd on the Tensas River. This farm is located in an area with good soils capable of growing good crops. This is a 2/3 interest in this farm. With the way that the farm is laid out along Doughty Rd you could easily divide the farm and separate the interest. The tenant on this farm has been here for years and is doing a really nice job. The farm is gently rolling and would not be hard to fix for irrigation. Brown Realty Co Jerry Brown Broker 2189 hwy 425 Rayville LA 71269 318-728-9544

DISCLAIMER: The information contained herein is as obtained by this broker from sellers, owners, or other sources. This information is considered reliable, neither this broker nor owners make any guarantee, warranty or representation as to correctness of any data or descriptions and the accuracy of such statements. The correctness and / or accuracy of any and all statements should be determined through independent investigation made by the prospective purchaser. Any offer for sale is subject to prior sale, errors and omissions, change of price, terms or other conditions or withdrawal from sale

Generated on: April 4, 2017