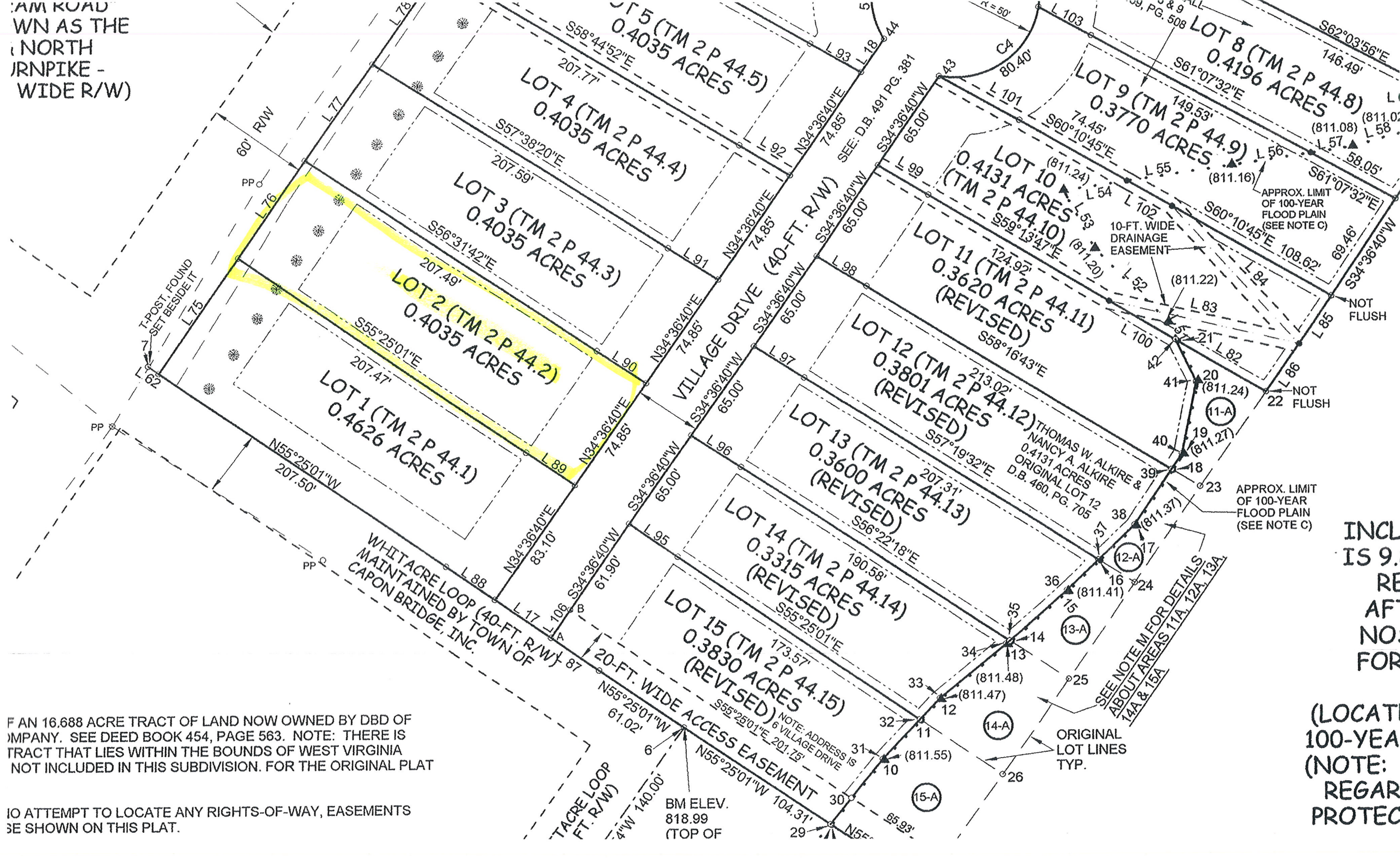


AM ROAD
WN AS THE
NORTH
RN PIKE -
WIDE R/W)

AN 16.688 ACRE TRACT OF LAND NOW OWNED BY DBD OF
MPANY. SEE DEED BOOK 454, PAGE 563. NOTE: THERE IS
TRACT THAT LIES WITHIN THE BOUNDS OF WEST VIRGINIA
NOT INCLUDED IN THIS SUBDIVISION. FOR THE ORIGINAL PLAT

IO ATTEMPT TO LOCATE ANY RIGHTS-OF-WAY, EASEMENTS
BE SHOWN ON THIS PLAT.



INCL
IS 9.
RE
AF
NO
FOR

(LOCATI
100-YEA
(NOTE:
REGAR
PROTEC

REVISED AREA IS 10.1701 ACRES
AFTER SMALL MERGERS FROM LOT
NOS. 11, 12, 13, 14 & 15; SEE NOTE M
FOR MORE SPECIFIC INFORMATION.

(TM 2 P 44)

(LOCATED ALMOST ENTIRELY WITHIN THE
100-YEAR FLOOD PLAIN OR THE FLOODWAY)
(NOTE: FOR MORE SPECIFIC INFORMATION
REGARDING THE COMMON AREA SEE THE
PROTECTIVE COVENANTS AS RECORDED IN
D.B. 459 AT PAGE 498.)

