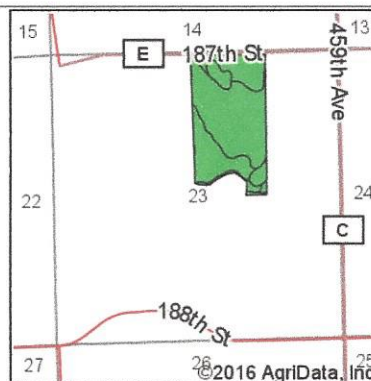
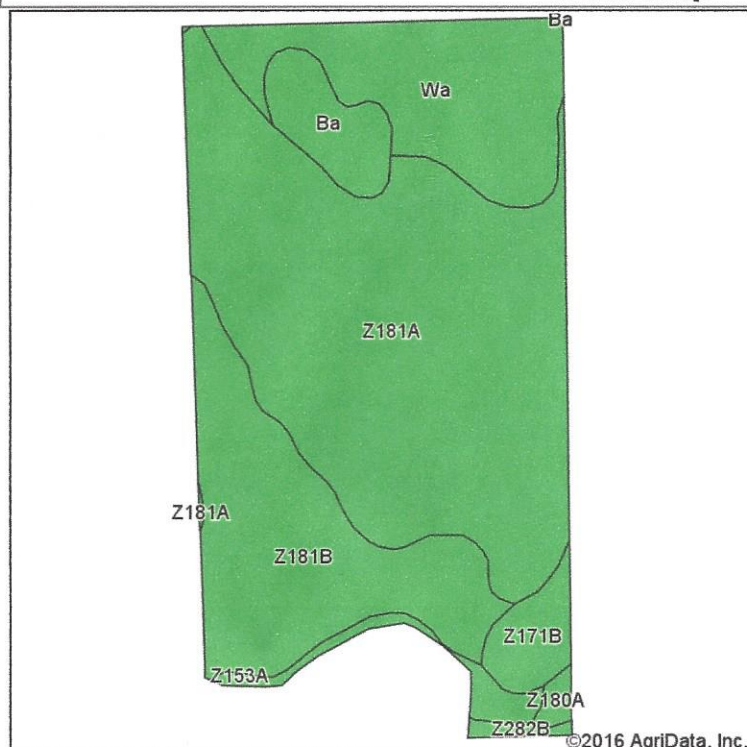


Soils Map



State: **South Dakota**
 County: **Hamlin**
 Location: **23-114N-52W**
 Township: **Florence**
 Acres: **72.95**
 Date: **8/1/2016**

Maps Provided By:



Soils data provided by USDA and NRCS.

©2016 AgriData, Inc.

Area Symbol: SD057, Soil Area Version: 17

Code	Soil Description	Acres	Percent of field	PI Legend	Non-Irr Class *c	Productivity Index	State Productivity Index	Alfalfa hay	Corn	Soybeans	Spring wheat	Winter wheat
Z181A	Brandt silty clay loam, coteau, 0 to 2 percent slopes	38.15	52.3%		Is	85	73					
Z181B	Brandt silty clay loam, coteau, 2 to 6 percent slopes	15.39	21.1%		Ile	77	66					
Wa	Waubay silty clay loam, 0 to 2 percent slopes	11.35	15.6%		Iw	98	84					
Ba	Badger silty clay loam	3.33	4.6%		Ilw	80	69	1.7	77	29	29	31
Z171B	Renshaw-Fordville loams, coteau, 2 to 6 percent slopes	2.29	3.1%		IVs	43	37					
Z153A	Lamoure-Rauville silty clay loams, channeled, 0 to 2 percent slopes, frequently flooded	1.56	2.1%		Vlw	13	11					
Z180A	Goldsmith silty clay loam, coteau, 0 to 2 percent slopes	0.45	0.6%		Iw	89	77					
Z282B	Estelline-Kampeska silt loams, 2 to 6 percent slopes	0.43	0.6%		Ile	54	46					
Weighted Average						82.1	70.5	0.1	3.5	1.3	1.3	1.4

*c: Using Capabilities Class Dominant Condition Aggregation Method

Soils data provided by USDA and NRCS.