

Aerial Map



map center: 44° 59' 6.97, 97° 26' 34.69

0ft 827ft 1654ft

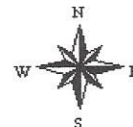
Maps Provided By:



© AgriData, Inc. 2016

www.AgridataInc.com

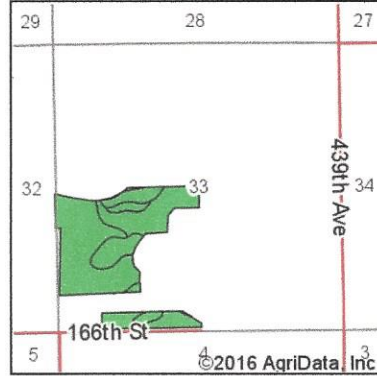
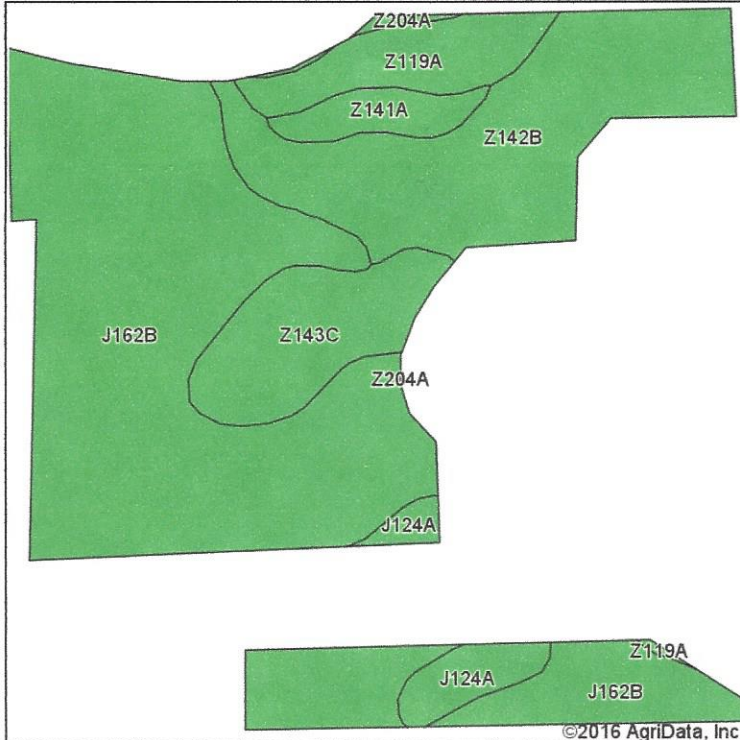
33-118N-55W
Codington County
South Dakota



8/3/2016

Field borders provided by Farm Service Agency as of 5/21/2008.

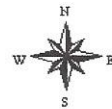
Soils Map



State: **South Dakota**
 County: **Codington**
 Location: **33-118N-55W**
 Township: **Phipps**
 Acres: **87.94**
 Date: **8/3/2016**

Maps Provided By:








 CUSTOMIZED ONLINE MAPPING
 © AgriData, Inc. 2016 www.AgriDataInc.com



Soils data provided by USDA and NRCS.

©2016 AgriData, Inc.

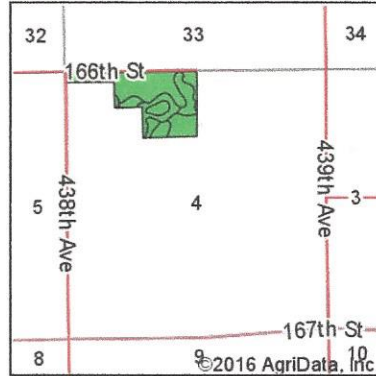
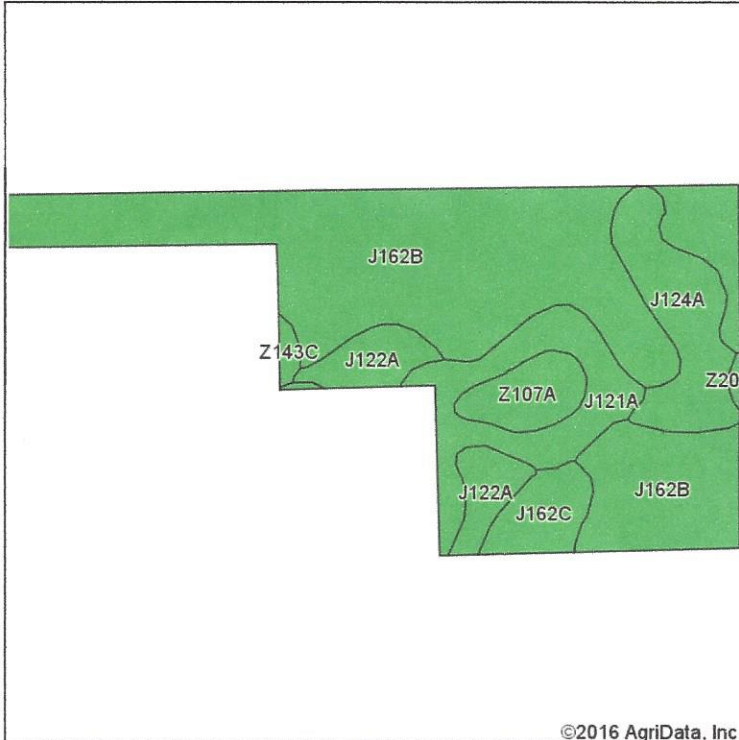
Area Symbol: SD029, Soil Area Version: 19

Code	Soil Description	Acres	Percent of field	PI Legend	Non-Irr Class *c	Productivity Index	State Productivity Index
J162B	Poinsett-Buse-Waubay complex, 1 to 6 percent slopes	50.10	57.0%		Ile	81	68
Z142B	Barnes-Buse-Svea loams, coteau, 1 to 6 percent slopes	18.83	21.4%		Ile	77	65
Z143C	Barnes-Buse loams, coteau, 6 to 9 percent slopes	7.88	9.0%		IIle	60	50
Z119A	Hamerly-Balaton loams, coteau, 0 to 3 percent slopes	5.30	6.0%		IIs	69	58
J124A	Cubden-Tonka silty clay loams, coteau, 0 to 2 percent slopes	3.00	3.4%		IIs	71	60
Z141A	Barnes-Svea loams, coteau, 0 to 2 percent slopes	2.49	2.8%		Ie	87	73
Z204A	Mauvais clay loam, occasionally ponded, 0 to 2 percent slopes	0.34	0.4%		IVw	24	20
Weighted Average						77.1	64.8

*c: Using Capabilities Class Dominant Condition Aggregation Method

Soils data provided by USDA and NRCS.

Soils Map



State: **South Dakota**
 County: **Codington**
 Location: **4-117N-55W**
 Township: **Graceland**
 Acres: **46.38**
 Date: **8/3/2016**

©2016 AgriData, Inc.

Maps Provided By:



Soils data provided by USDA and NRCS.

Area Symbol: SD029, Soil Area Version: 19

Code	Soil Description	Acres	Percent of field	PI Legend	Non-Irr Class *c	Productivity Index	State Productivity Index
J162B	Poinsett-Buse-Waubay complex, 1 to 6 percent slopes	28.08	60.5%		Ile	81	68
J121A	Colvin silty clay loam, till substratum, 0 to 1 percent slopes	5.50	11.9%		IVw	46	39
J124A	Cubden-Tonka silty clay loams, coteau, 0 to 2 percent slopes	4.96	10.7%		Ils	71	60
J122A	Cubden silty clay loam, 0 to 2 percent slopes	3.19	6.9%		Ils	77	65
Z107A	Parnell silty clay loam, coteau, 0 to 1 percent slopes	2.10	4.5%		Vw	32	27
J162C	Poinsett-Buse-Waubay complex, 2 to 9 percent slopes	2.07	4.5%		Ille	69	58
Z143C	Barnes-Buse loams, coteau, 6 to 9 percent slopes	0.34	0.7%		Ille	60	50
Z204A	Mauvais clay loam, occasionally ponded, 0 to 2 percent slopes	0.14	0.3%		IVw	24	20
Weighted Average						72.4	60.9

*c: Using Capabilities Class Dominant Condition Aggregation Method

Soils data provided by USDA and NRCS.