
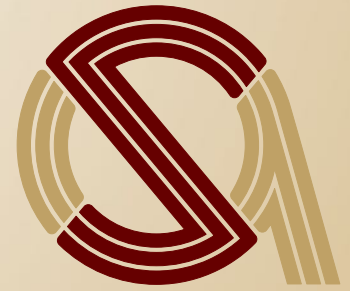


SCHUIL & ASSOCIATES

DIVERSIFIED REAL ESTATE



**Organic Dairy
For Sale or Lease
Dublin Texas
+/- 425 Acres**

Contact Marc Schuil for more information
559-734-1700 - marc@schuil.com - www.schuil.com
5020 W Mineral King Ave. Visalia, CA 93291
TX Lic: BR0581218 Cal BRE: 00815172



SCHUIL & ASSOCIATES

DIVERSIFIED REAL ESTATE

J&J Dairy

Size:	+/- 425 Organic Acres		
Location:	The property is located just south of Dublin, Texas (see location maps)		
Facility:	Freestall Facility Double 16 Parallel Milk Parlor Milking Capacity: +/- 750 One 6,000 Gallon and One 2,500 Gallon Milk Tanks		
Water:	Pump/Wells - 150 GPM Two ponds on property		
Waste:	Lagoons		
Buildings:	Owners home, and office/second home. 4 Mobile homes on the property. 70' Truck Scale		
Notes:	The property was recently certified as an organic. The dairy also has a permit to expand to 3,500 milk cows. The property is located inside Leon River watershed.		
Lease:	Call for details.		
Price:	\$3,200,000		
Contact:	Marc Schuil 559-280-1750 marc@schuil.com TX Lic: BR0581218	Scott Schuil 559-859-9734 scott@schuil.com BRE: 01877812	Jonathan Verhoeven 559-707-5658 jonathan@schuil.com BRE: 01966852

WWW.SCHUIL.COM

Satellite View

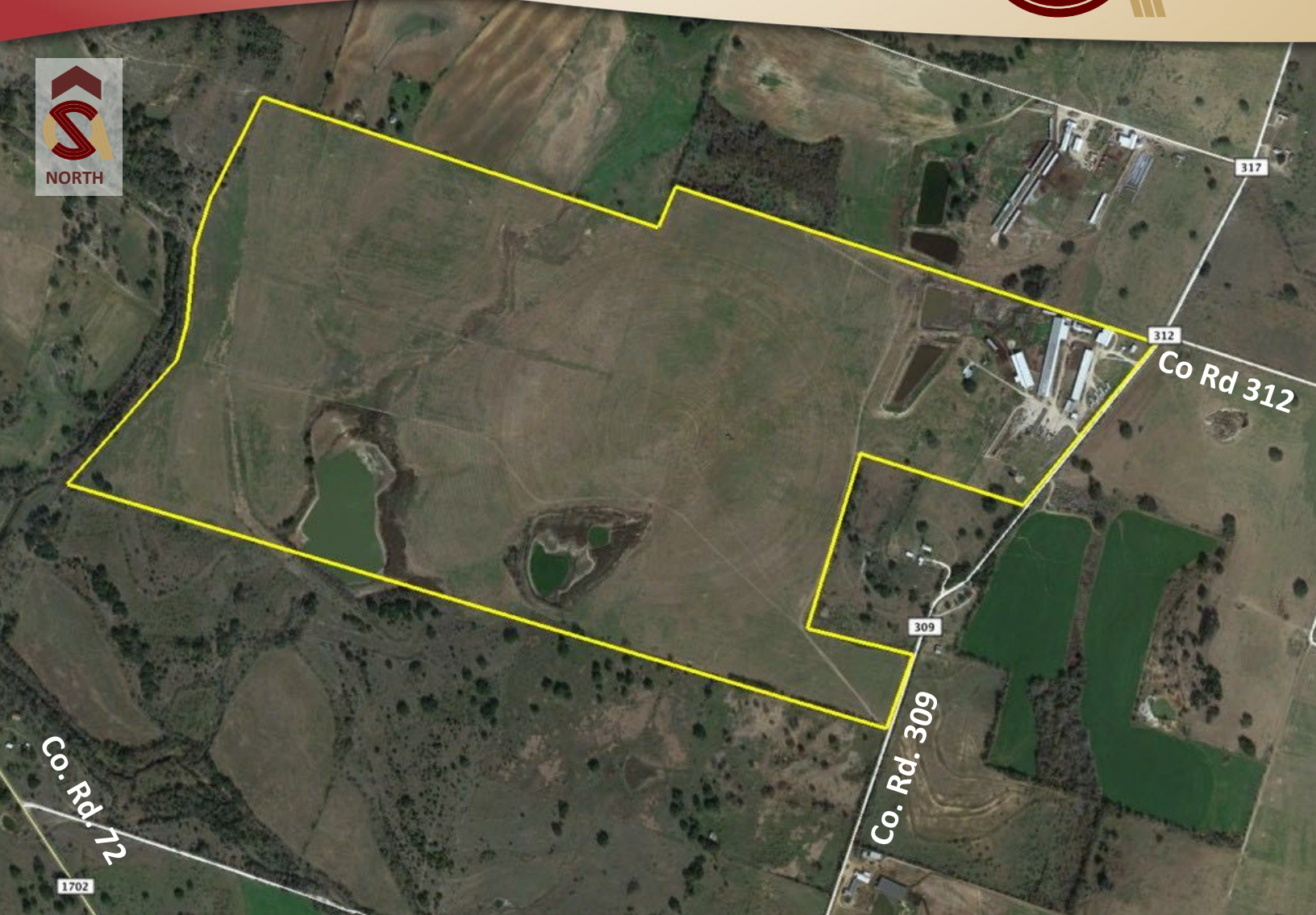


This information was obtained from reliable sources and is believed to be correct, but is NOT guaranteed.

5020 W Mineral King Avenue, Visalia, CA 93291

559-734-1700 www.schuil.com

Aerial View

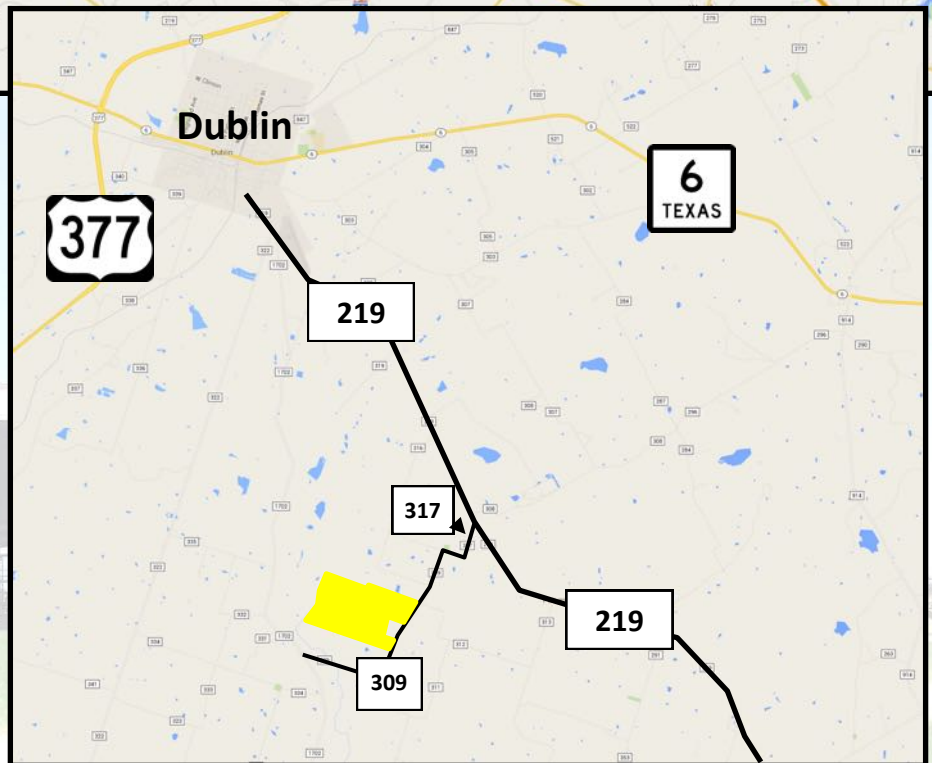


This information was obtained from reliable sources and is believed to be correct, but is NOT guaranteed.

Area Maps



8 Miles to Dublin
21 Miles to Stephenville
99 Miles to Fort Worth
123 Miles to Dallas



This information was obtained from reliable sources and is believed to be correct, but is NOT guaranteed.

5020 W Mineral King Avenue, Visalia, CA 93291

559-734-1700 www.schuil.com

Pictures



This information was obtained from reliable sources and is believed to be correct, but is NOT guaranteed.

5020 W Mineral King Avenue, Visalia, CA 93291

559-734-1700 www.schuil.com

Pictures



This information was obtained from reliable sources and is believed to be correct, but is NOT guaranteed.

5020 W Mineral King Avenue, Visalia, CA 93291

559-734-1700 www.schuil.com

Pictures



This information was obtained from reliable sources and is believed to be correct, but is NOT guaranteed.

5020 W Mineral King Avenue, Visalia, CA 93291

559-734-1700 www.schuil.com

Pictures



Contact Marc Schuil for more information
559-734-1700 - marc@schuil.com - www.schuil.com
5020 W Mineral King Ave. Visalia, CA 93291
TX Lic: BR0581218 Cal BRE: 00815172

