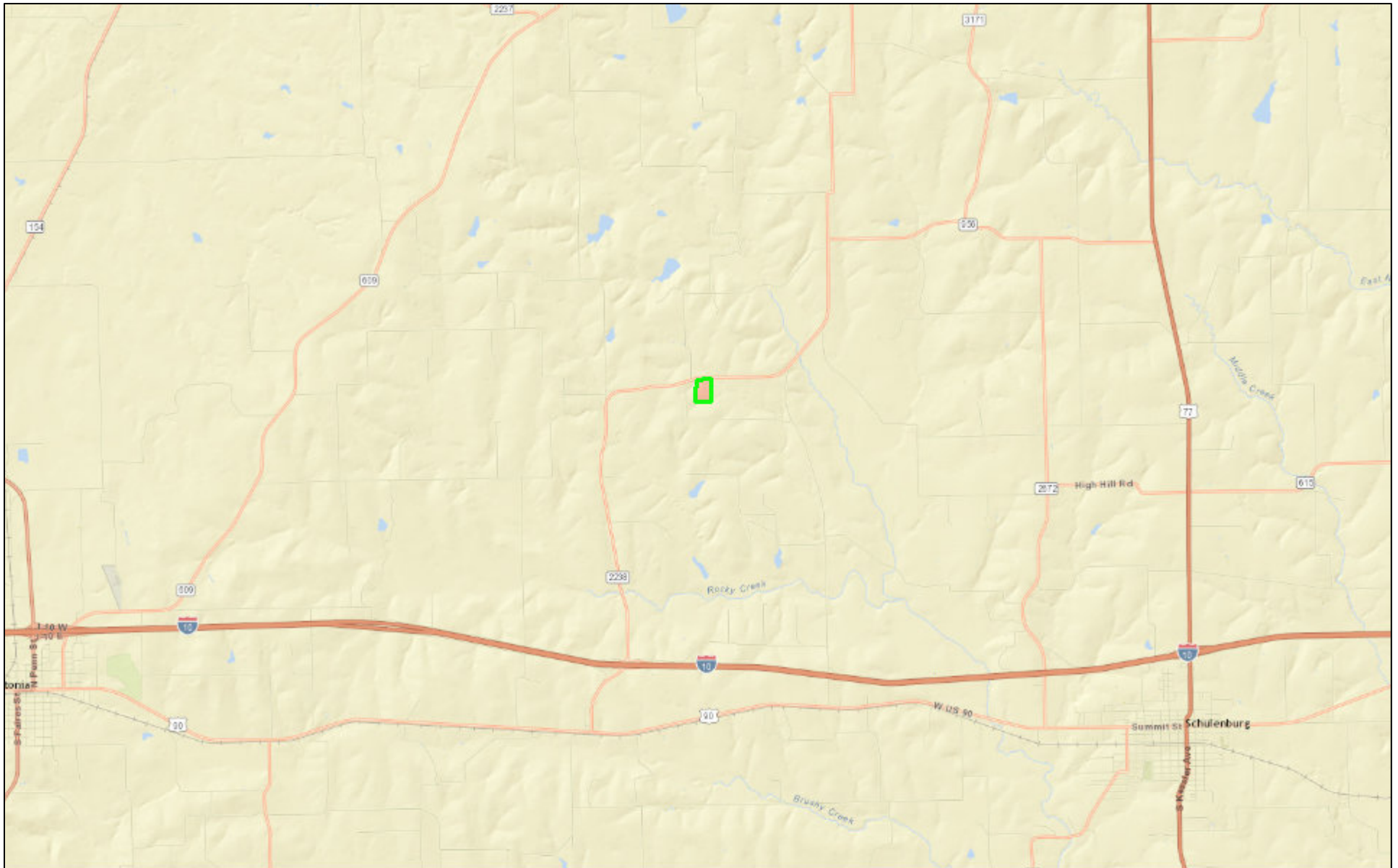


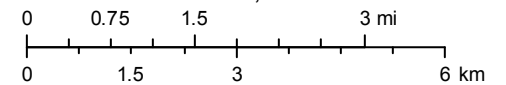
5155 FM 2238



March 6, 2017

Disclaimer: This product is for informational purposes only and has not been prepared for or be suitable for legal, engineering, or surveying purposes. It does not represent an on-the-ground survey and represents only the approximate relative location of boundaries

1:108,260



Sources: Esri, HERE, DeLorme, USGS, Intermap, INCREMENT P, NRCan, Esri Japan, METI, Esri China (Hong Kong), Esri Korea, Esri (Thailand),

Fayette County Appraisal District & BIS Consulting - www.bisconsultants.com

This product and relative contents are the property of the respective governmental entity and BIS Consultants. Use is restricted for official purposes.