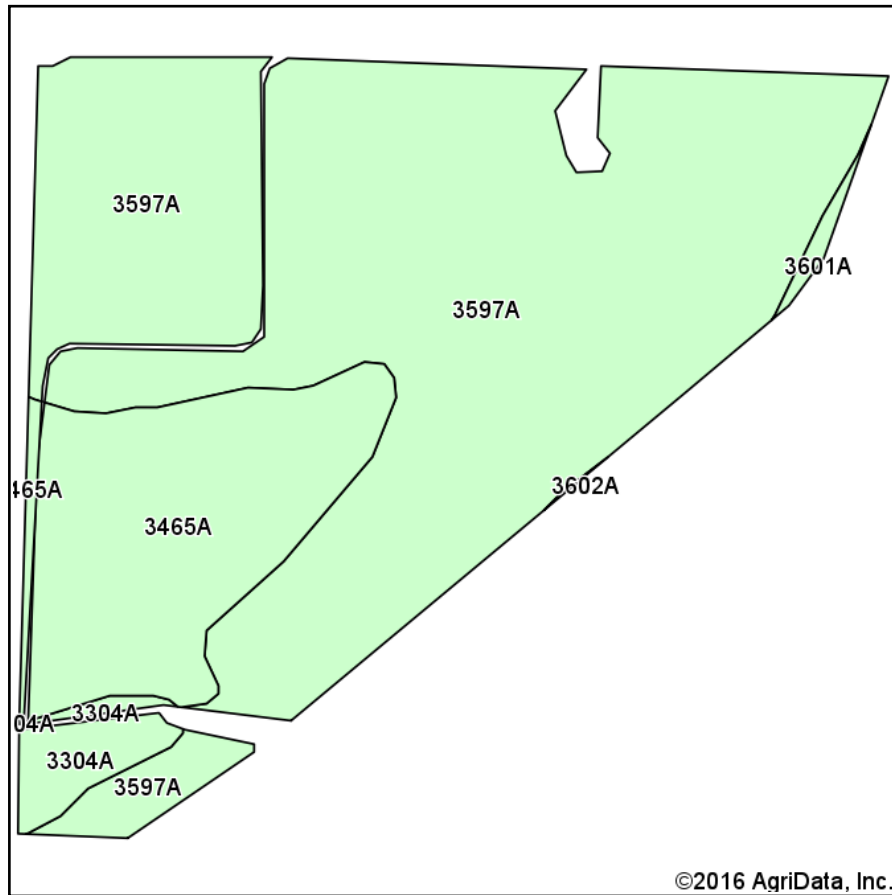
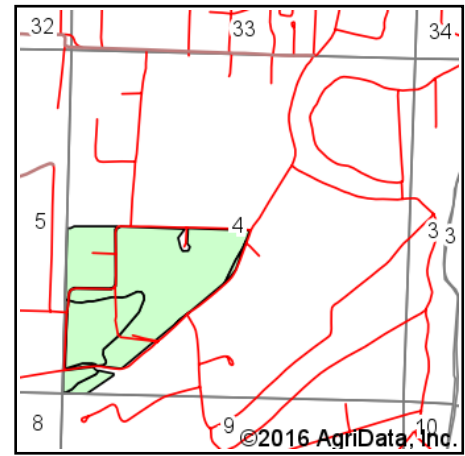


# Soils Map



Soils data provided by USDA and NRCS.



State: **Illinois**  
 County: **White**  
 Location: **4-5S-14W**  
 Township: **Hawthorne**  
 Acres: **107.2**  
 Date: **7/6/2016**



iAuctionandRealty.com

Maps Provided By:



© AgriData, Inc. 2016

www.AgriDataInc.com



## Area Symbol: IL193, Soil Area Version: 10

Code	Soil Description	Acres	Percent of field	Il. State Productivity Index Legend	Subsoil rooting a	Corn Bu/A	Soybeans Bu/A	Wheat Bu/A	Oats Bu/A b	Sorghum c	Alfalfa d hay, T/A	Grass-le gume e hay, T/A	Crop productivity index for optimum management
3597A	Armiesburg silty clay loam, 0 to 2 percent slopes, frequently flooded	82.45	76.9%		FAV	177	57	69	87	0	6.65	0.00	132
3465A	Montgomery silty clay loam, 0 to 2 percent slopes, frequently flooded	21.08	19.7%		FAV	148	49	58	68	0	0.00	4.52	110
3304A	Landes fine sandy loam, 0 to 2 percent slopes, frequently flooded	3.11	2.9%		FAV	135	45	55	61	0	3.39	0.00	100
3601A	Nolin silty clay loam, 0 to 2 percent slopes, frequently flooded	0.56	0.5%		FAV	159	51	60	0	120	3.89	0.00	116
Weighted Average						170	55	66.4	82.1	0.6	5.23	0.89	126.7

Area Symbol: IL193, Soil Area Version: 10

**Table: Optimum Crop Productivity Ratings for Illinois Soil by K.R. Olson and J.M. Lang, Office of Research, ACES, University of Illinois at Champaign-Urbana.** Version: 1/2/2012 Amended Table S2 B811

Crop yields and productivity indices for optimum management (B811) are maintained at the following NRES web site:

<https://www.ideals.illinois.edu/handle/2142/1027/>

\*\* Indexes adjusted for slope and erosion according to Bulletin 811 Table S3

**a** UNF = unfavorable; FAV = favorable

**b** Soils in the southern region were not rated for oats and are shown with a zero "0".

**c** Soils in the northern region or in both regions were not rated for grain sorghum and are shown with a zero "0".

**d** Soils in the poorly drained group were not rated for alfalfa and are shown with a zero "0".

**e** Soils in the well drained group were not rated for grass-legume and are shown with a zero "0".

Soils data provided by USDA and NRCS. Soils data provided by University of Illinois at Champaign-Urbana.

\*c: Using Capabilities Class Dominant Condition Aggregation Method