

78.64 ACRES +/- PRINCE GEORGE COUNTY, VA

ASKING PRICE ~ \$286,000



REPRESENTED BY:

G. EDMOND MASSIE, IV
ALC, CCIM, MBA
(804) 754-3474

WILLIAM G. GRANT
ALC, VLS
(804) 754-3476

JEFFREY S. HUFF
ALC, FORESTER
(804) 750-1207

TABLE OF CONTENTS

- I. PROPERTY DESCRIPTION
- II. PHOTOGRAPHS
- III. TAX MAP
- IV. LOCATION MAP
- V. AERIAL PHOTOGRAPH
- VI. TOPOGRAPHIC MAP
- VII. ZONING MAP

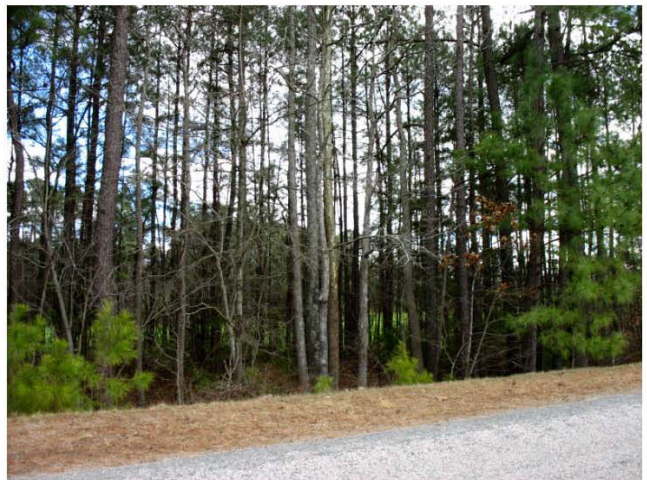
PROPERTY DESCRIPTION

The subject property is shown on Prince George County Tax Map as shown below. The deeds were not provided. A review of the Prince George County Tax Records indicates the following:

<u>Tax Map Number</u>	<u>Acreage</u>	<u>Tax Assessment</u>
430(0A)00-106-0	26.54	\$112,900
430(0A)00-035-0	51	\$152,100
430(13)00-00B-0	<u>1.1</u>	<u>\$76,600</u>
	78.64	\$341,600

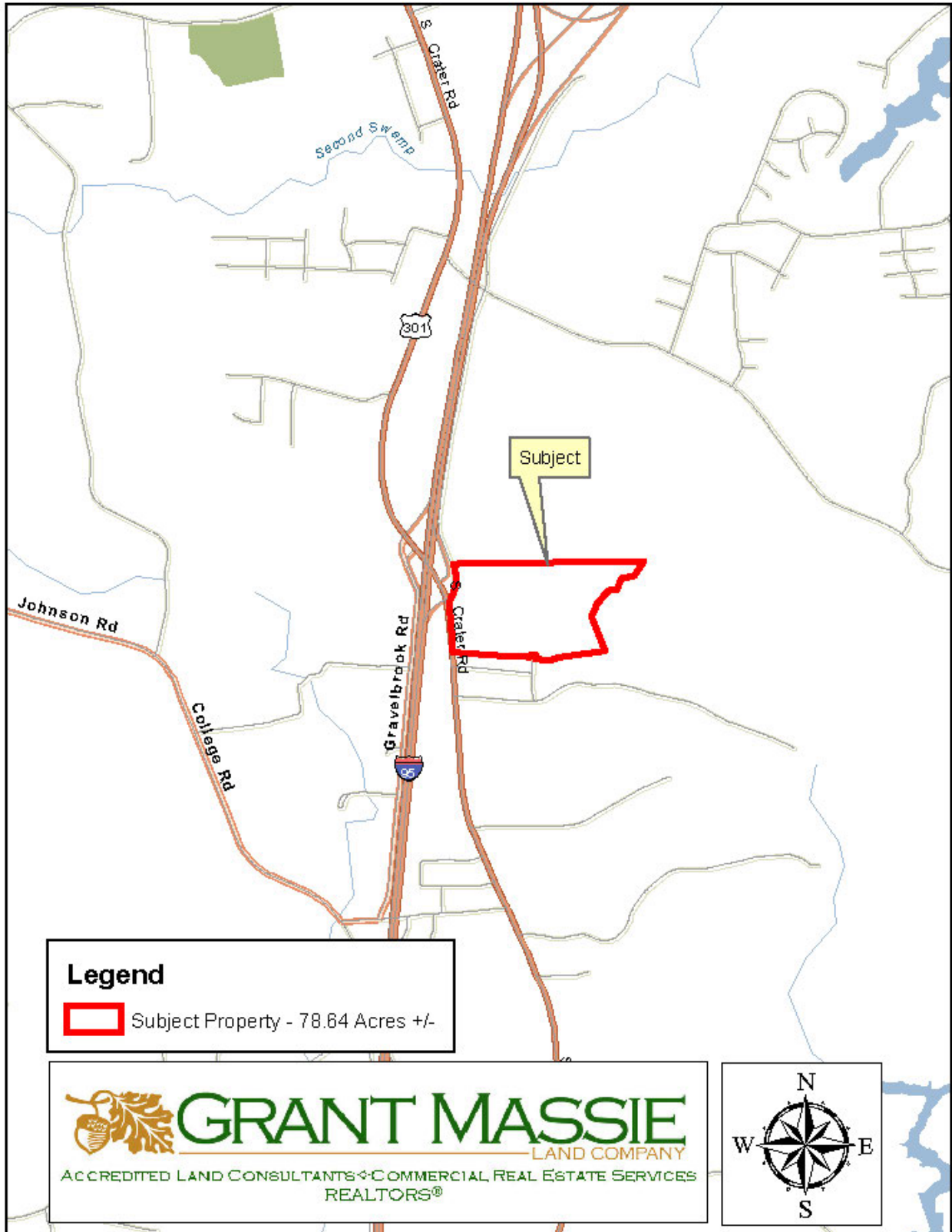
The subject property is currently zoned R-1(Residential). There is one tax parcel (1.1 acres) along Route 301 that is zoned B-1(Business) There is frontage on Route 301 with additional access off of Timber Road and Eagle Road. The parcels are primarily wooded, but much of the timber has been removed. There is a 1.2 acre pond and a small amount of open land.

PHOTOGRAPHS





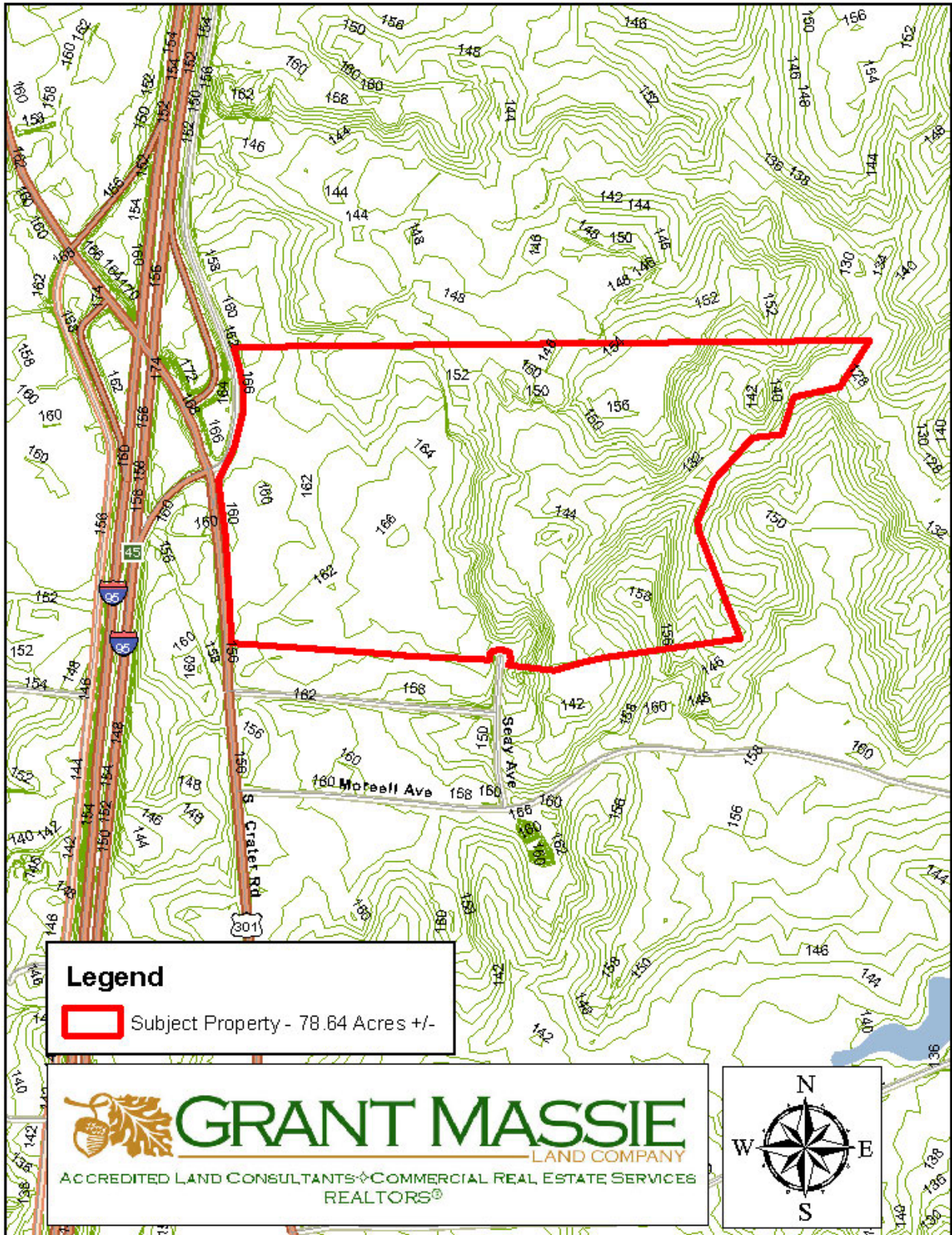
LOCATION MAP



AERIAL PHOTOGRAPH



TOPOGRAPHIC MAP



ZONING MAP

