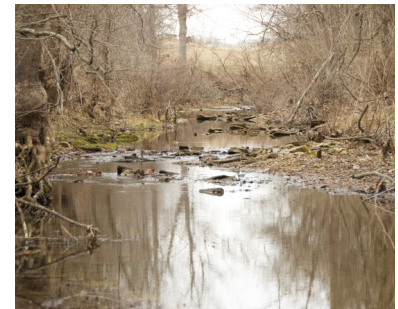


Lincoln County Missouri Tillable Farm for Sale

United Country Trophy Properties and Auction • 855.573.5263 • leads@trophypro.com



Additional property is available for purchase - contact listing agent for info.



PROPERTY ADDRESS:

56 Harrell Road
Troy, MO 63379

PRICE: \$100,000

ACRES: 24

COUNTY: Lincoln

PROPERTY DESCRIPTION:

This 24 +/- acres farm consists of 21 +/- acres of highly productive tillable ground. It is located on Hwy W, 10 minutes northeast of Troy Missouri. The 21 +/- acres of tillable was in organic vegetable production. This farm has two sides of blacktop road frontage.

PROPERTY HIGHLIGHTS:

- 24 +/- acres located just outside Troy, MO
- Very close to Cuivre River State Park
- Blacktop road frontage on two sides
- 21 +/- acres tillable bottom ground
- Tillable ground was in organic vegetable production



PRESENTED BY:

JASON CLEVELAND

Broker/Owner

M: 636.751.4579

P: 855.573.5263 x701

jcleland@trophypro.com

United Country Trophy Properties
and Auction

15480 Clayton Road

Suite 101

Ballwin, MO 63011

www.uctpa.com

leads@trophypro.com

Lincoln County Missouri Tillable Farm for Sale

United Country Trophy Properties and Auction • 855.573.5263 • leads@trophypro.com



TAXES: Contact Agent for info

TAX YEAR: 2015

TILLABLE: 21Acres

TIMBERED: 0 Acres

PASTURED: 0 Acres