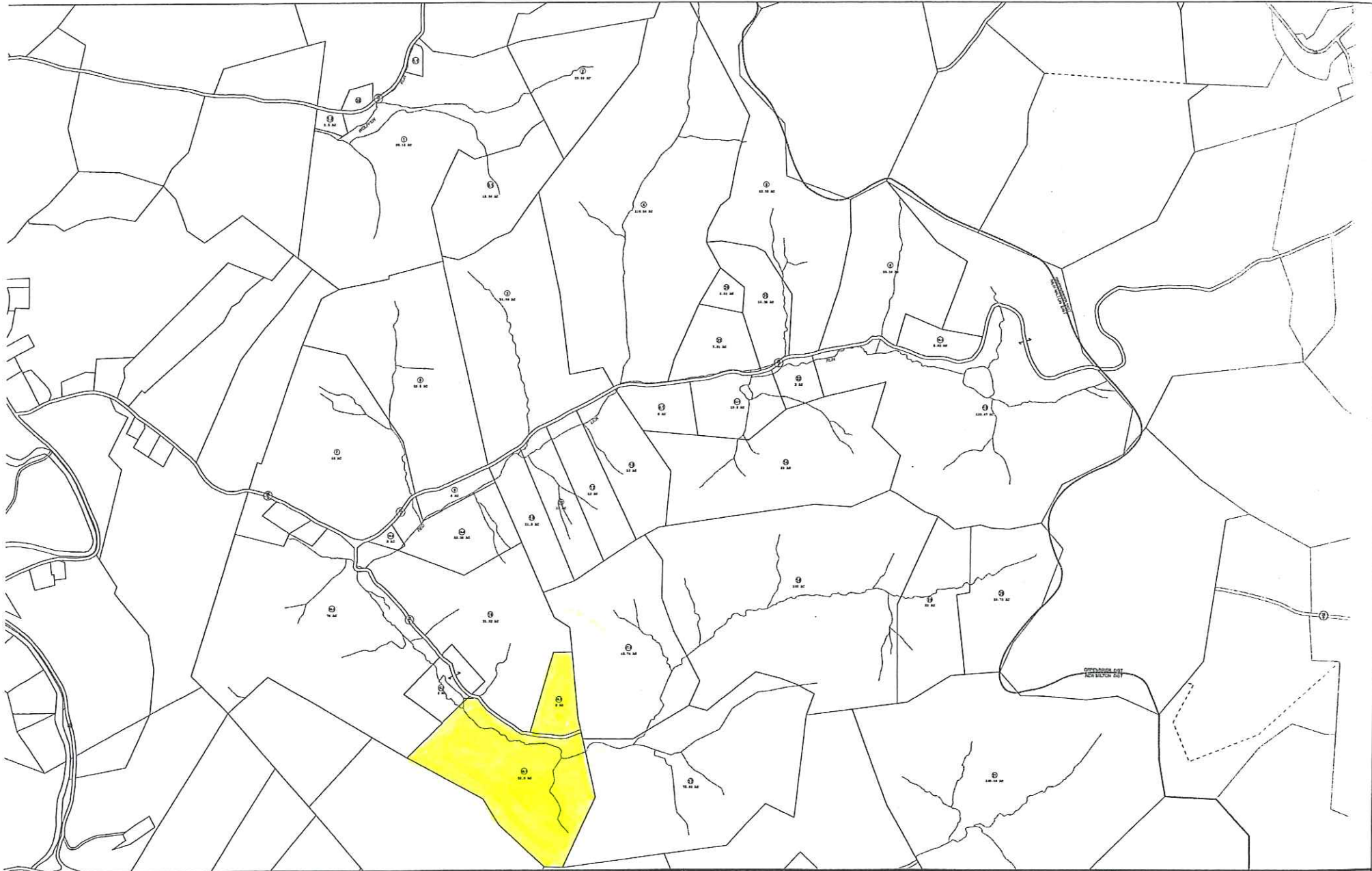


**\*Boundary lines, size & shape  
are an approximate sketch only  
and not to scale\***



<div>N</div>	<div>Legend</div> <div><div><div>--- Original Lot Line</div><div>--- Present</div><div>--- Easement</div><div>--- Road and Railroad R/W</div><div>--- State Boundary</div><div>--- Road Right of Way</div></div><div><div>Parcel Number</div><div>Parcel Area</div><div>Parcel</div></div></div>	<div>Revisions</div> <table><tr><td>1</td><td>7</td></tr><tr><td>2</td><td>8</td></tr><tr><td>3</td><td>9</td></tr><tr><td>4</td><td>10</td></tr><tr><td>5</td><td>11</td></tr><tr><td>6</td><td>12</td></tr></table>	1	7	2	8	3	9	4	10	5	11	6	12	<table><tr><td>4</td><td>5</td></tr><tr><td>8</td><td>9</td></tr><tr><td>12</td><td>13</td></tr></table>	4	5	8	9	12	13	<div>STATE OF WEST VIRGINIA</div> <div>DODDRIDGE COUNTY</div> <div>Office of Assessor</div>	<div>District</div> <div>NEW MILTON</div> <div>SHEET NO: 9</div> <div><div>Date, Aerial Photography</div><div>Photo No</div></div> <div><div>Date Map</div><div>Scale 1" = 400'</div></div>
	1	7																					
	2	8																					
	3	9																					
	4	10																					
	5	11																					
6	12																						
4	5																						
8	9																						
12	13																						