



Lil' Hackberry Canyon 231.46 Acres Edwards County, TX



Located SE of Rocksprings in Edwards County Easy access via all-weather road

Not in subdivision-there are zero restrictions

Scenic, 30-mile views from hilltops

Deep canyons and large seasonal creek beds carve out beautiful rock outcroppings

Large oak trees along creek bed

Great building and campsite areas Electricity readily available

Water well with windmill providing water to large cistern tank and watering trough on property

Very large, low fenced neighbor along eastern boundary

Good internal roads along western boundary of property

Whitetail, abundant turkey, hog, axis and aoudad

$\frac{1}{4}$ total of mineral interest to convey with sale

Ag exempt taxes \$460,845 Listing #279

Western Hill Country Realty

glynn@westernhillcountryrealty.com

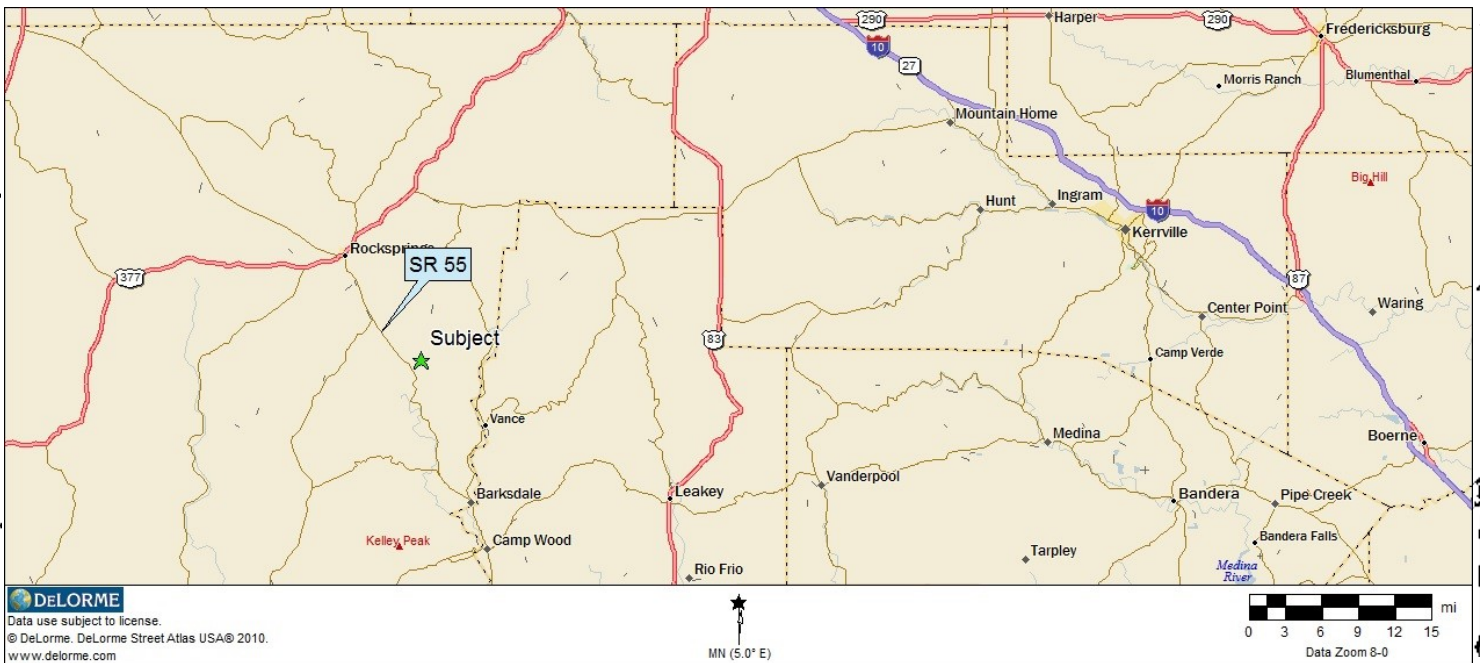
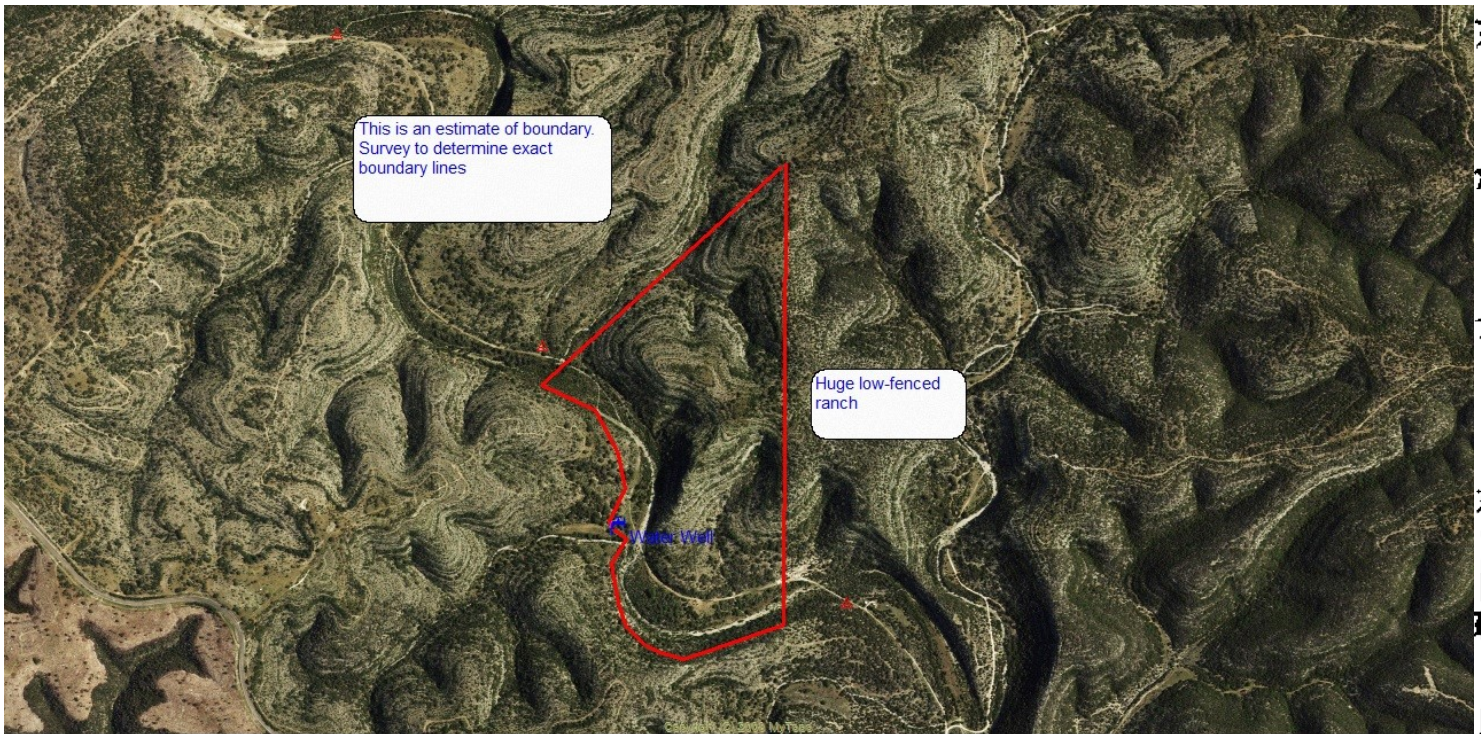
Glynn Hendley: Broker

www.westernhillcountryrealty.com

830-683-4435



Lil' Hackberry Canyon 231.46 Acres Edwards County, TX





Lil' Hackberry Canyon 231.46 Acres Edwards County, TX



Western Hill Country Realty
glynn@westernhillcountryrealty.com

Glynn Hendley: Broker
www.westernhillcountryrealty.com

830-683-4435



Lil' Hackberry Canyon 231.46 Acres Edwards County, TX



Western Hill Country Realty

glynn@westernhillcountryrealty.com

Glynn Hendley: Broker

www.westernhillcountryrealty.com

830-683-4435