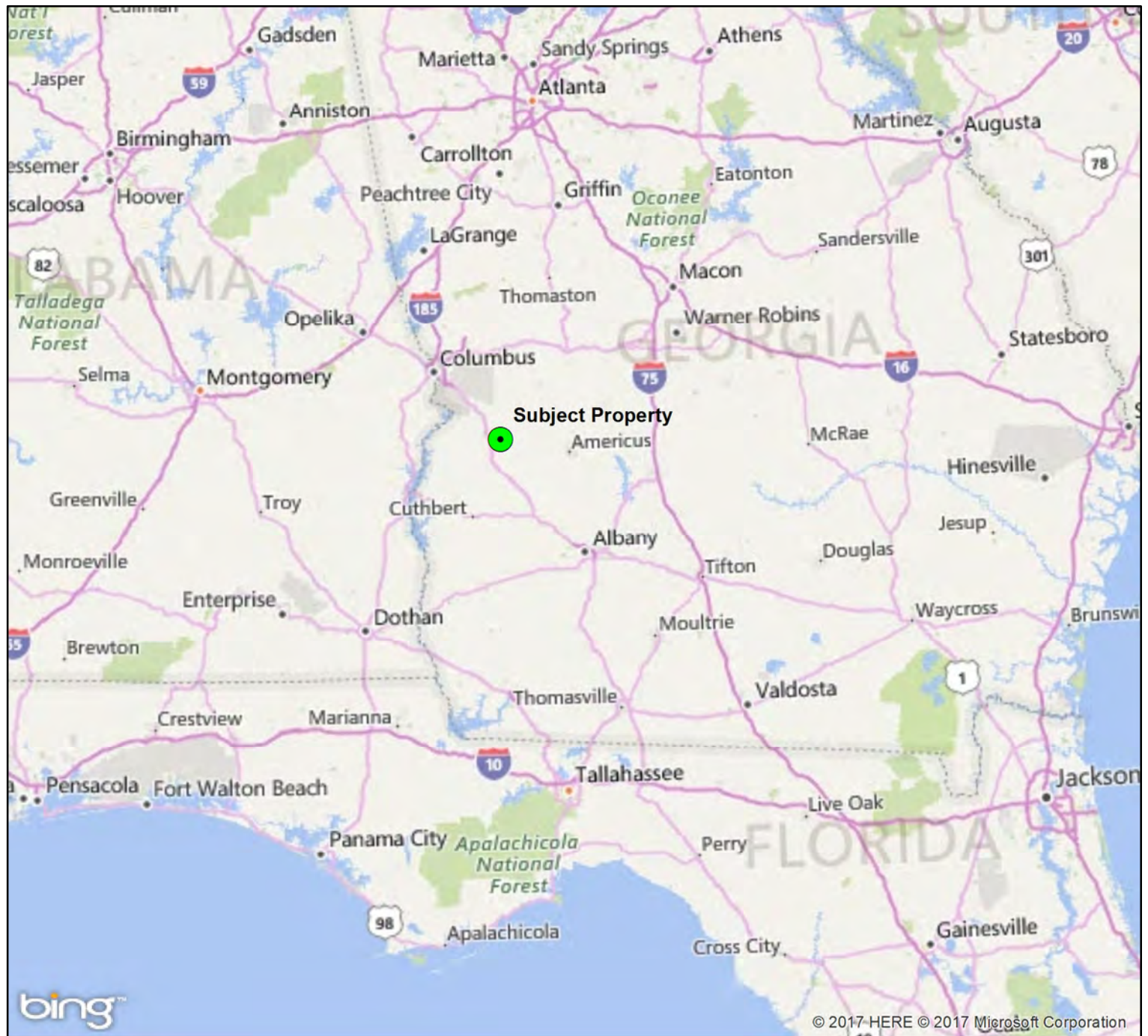


Morris Tract Webster Co GA +300 Acres

Legend

TractNum, Label

1081, Subject Property



*GIS mapped acres does not include county road right of ways, and the mapped location of Slaughter Creek is based on a USGS topo map. Property lines, timber type lines, roads, creeks, etc. are approximate and are not based on a survey.



www.matreforestry.com
Albany, Georgia
229-639-4973

Mapped by Mike Matre in ArcGIS.
Disclaimer: Map information is not guaranteed.

1:3,000,000 in = 250,000 ft 1 inch equals 47.35 miles 16820 Feet



Date: 2/22/2017

Morris Tract Webster Co GA +300 Acres

Legend

TractNum, TractName

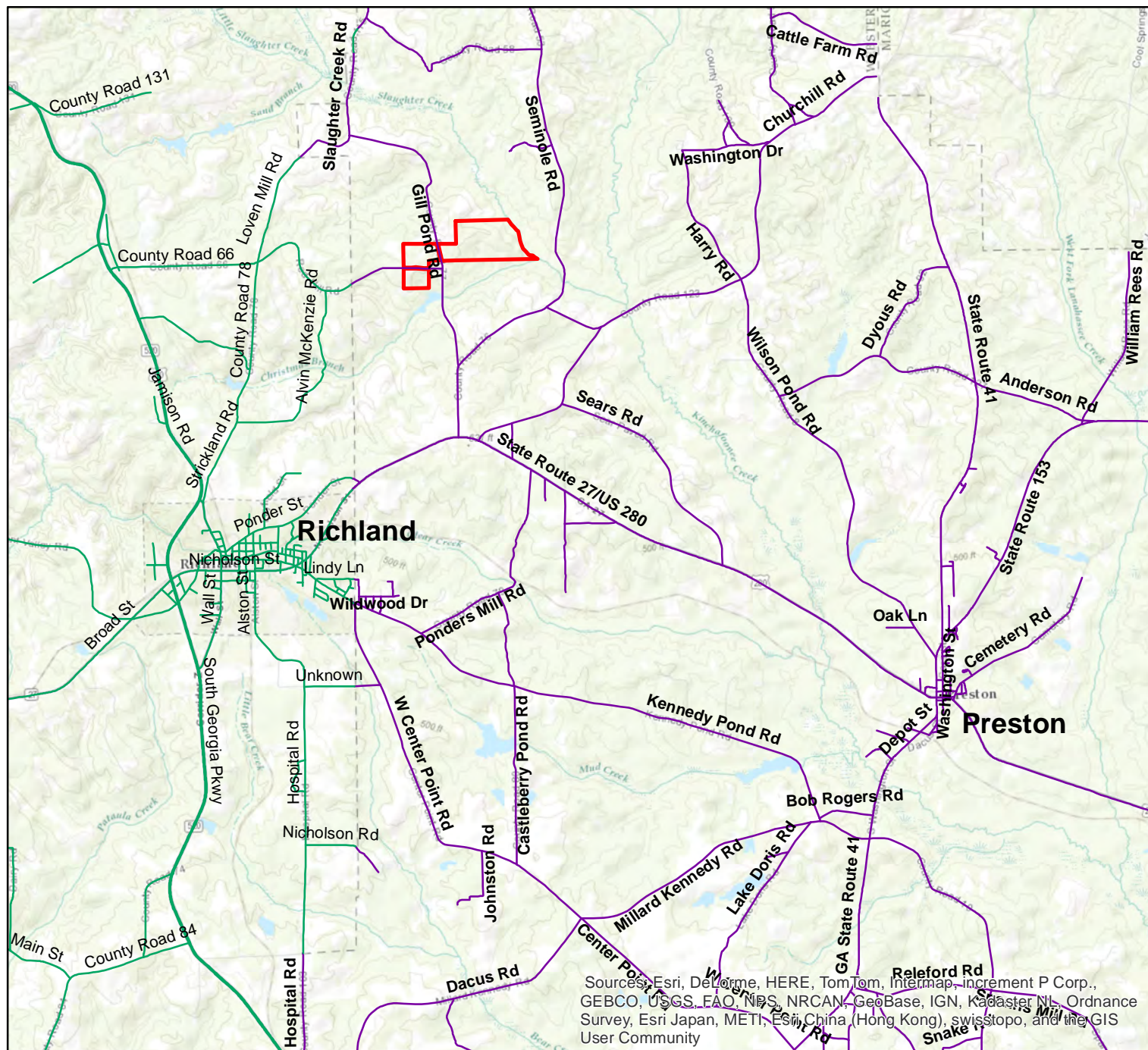
1081, Morris Tract

*GIS mapped acres does not include county road right of ways, and the mapped location of Slaughter Creek is based on a USGS topo map. Property lines, timber type lines, roads, creeks, etc. are approximate and are not based on a survey.



www.matreforestry.com
Albany, Georgia
229-639-4973

Mapped by Mike Matre in ArcGIS.
Disclaimer: Map information is not guaranteed.



Sources: Esri, DeLorme, HERE, TomTom, Intermap, increment P Corp., GEBCO, USGS, FAO, NPS, NRCAN, GeoBase, IGN, Kadaster NL, Ordnance Survey, Esri Japan, METI, Esri China (Hong Kong), swisstopo, and the GIS User Community

1:98,560 1 in = 8,213 ft

1 inch equals 1.56 miles

3300 Feet



Date: 2/22/2017

Morris Tract Webster Co GA +300 Acres

Legend

Lines

TractNum, Descrip

- 1081, Road Woods
- 1081, Drain
- 1081, Road Co Graded
- 1081, Creek Named

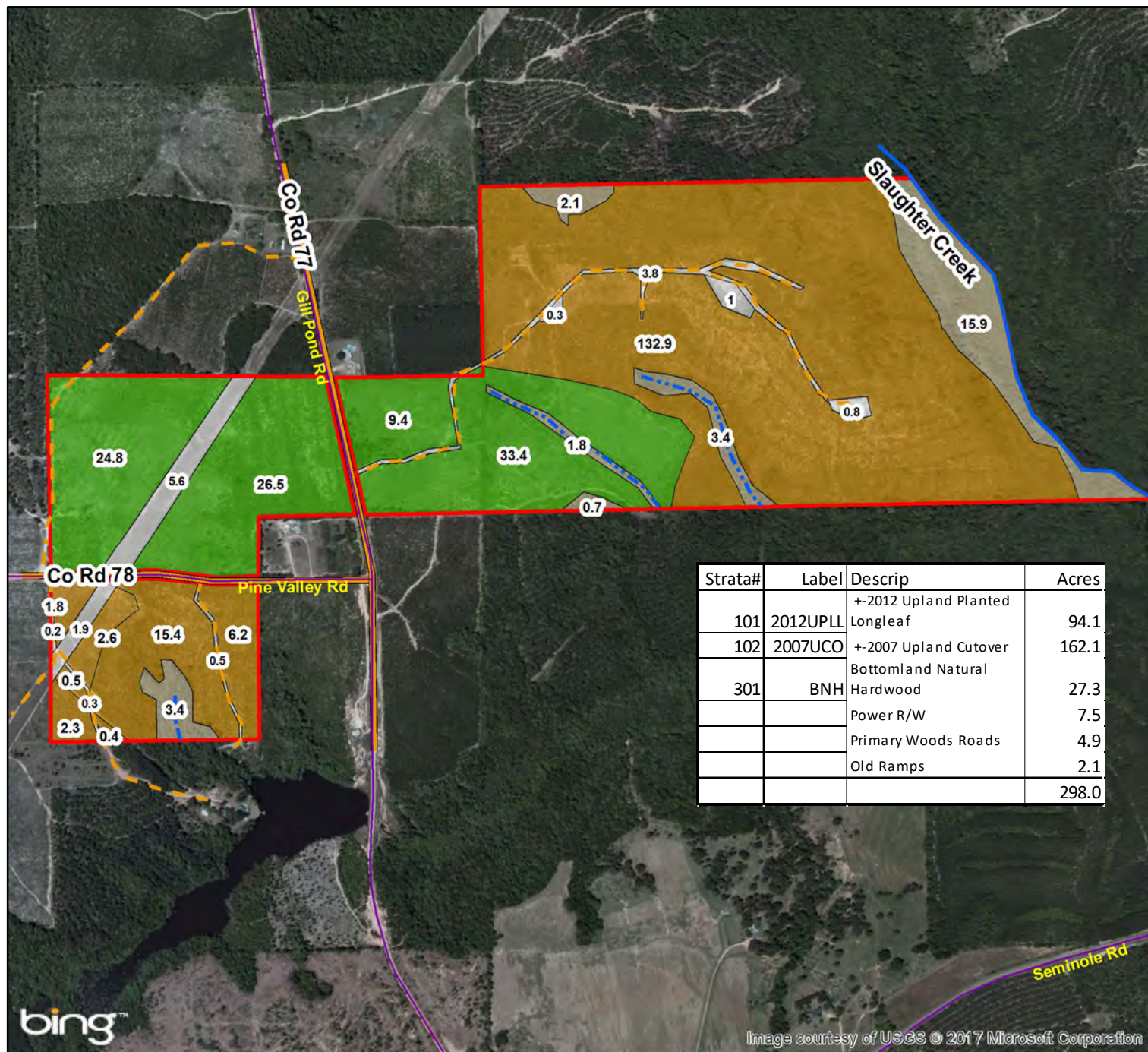
TractNum, TractName

- 1081, Morris Tract

Stands

StrataNum, Label

- 1081101, 2014UPLL
- 1081102, 2007UCO
- 1081301, BNH
- NonTimber



Strata#	Label	Descrip	Acres
101	2012UPLL	+2012 Upland Planted Longleaf	94.1
102	2007UCO	+2007 Upland Cutover Bottomland Natural Hardwood	162.1
301	BNH	Power R/W	27.3
		Primary Woods Roads	7.5
		Old Ramps	4.9
			2.1
			298.0

*GIS mapped acres does not include county road right of ways, and the mapped location of Slaughter Creek is based on a USGS topo map. Property lines, timber type lines, roads, creeks, etc. are approximate and are not based on a survey.



www.matreforestry.com
Albany, Georgia
229-639-4973

Mapped by Mike Matre in ArcGIS.
Disclaimer: Map information is not guaranteed.

1:12,000 1 in = 1,000 ft

1 inch equals 0.19 miles

0 330 660 1,320 Feet



Date: 2/22/2017

Image courtesy of USGS © 2017 Microsoft Corporation

Morris Tract Webster Co GA +-300 Acres

Legend

TractNum, TractName

1081, Morris Tract

Morris Tract 2016.jpg

RGB

Red: Band_1

Green: Band_2

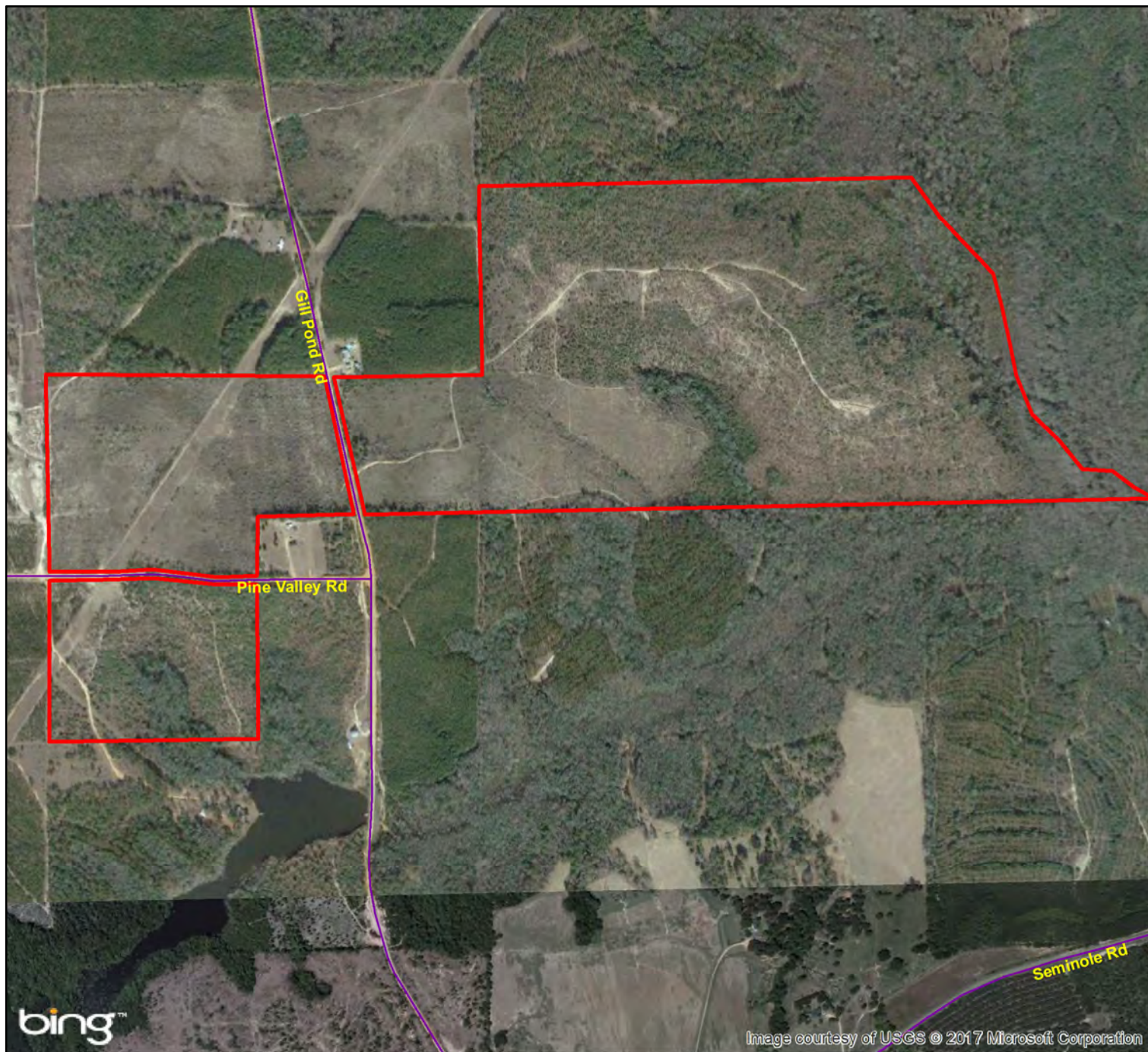
Blue: Band_3

*GIS mapped acres does not include county road right of ways, and the mapped location of Slaughter Creek is based on a USGS topo map. Property lines, timber type lines, roads, creeks, etc. are approximate and are not based on a survey.



www.matreforestry.com
Albany, Georgia
229-639-4973

Mapped by Mike Matre in ArcGIS.
Disclaimer: Map information is not guaranteed.



1:12,000 1 in = 1,000 ft

1 inch equals 0.19 miles

0 330 660 1,320 Feet



Date: 2/22/2017

Morris Tract Webster Co GA +-300 Acres

Legend

TractNum, TractName

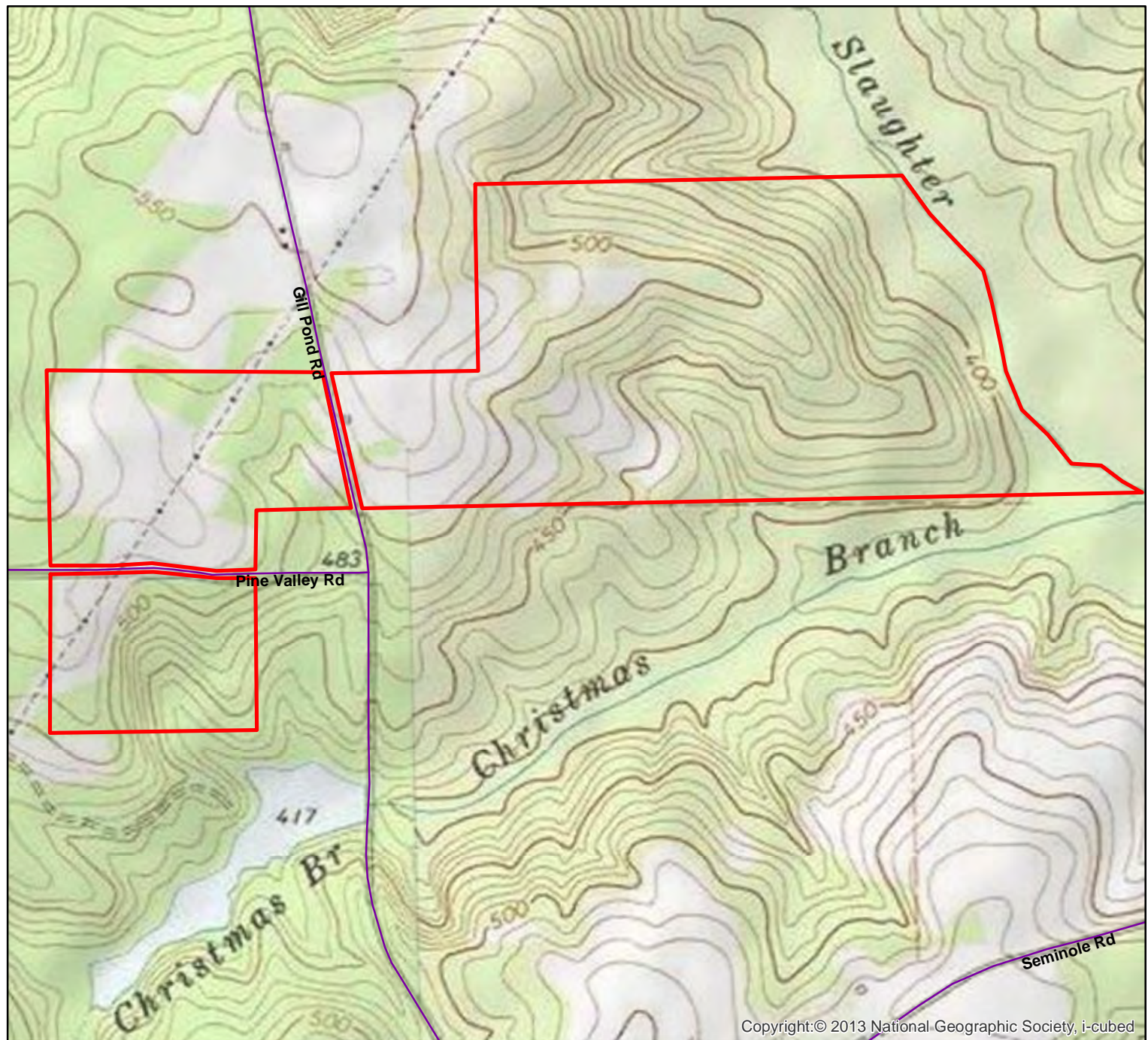
1081, Morris Tract

*GIS mapped acres does not include county road right of ways, and the mapped location of Slaughter Creek is based on a USGS topo map. Property lines, timber type lines, roads, creeks, etc. are approximate and are not based on a survey.



www.matreforestry.com
Albany, Georgia
229-639-4973

Mapped by Mike Matre in ArcGIS.
Disclaimer: Map information is not guaranteed.



Copyright:© 2013 National Geographic Society, i-cubed

1:12,000 1 in = 1,000 ft

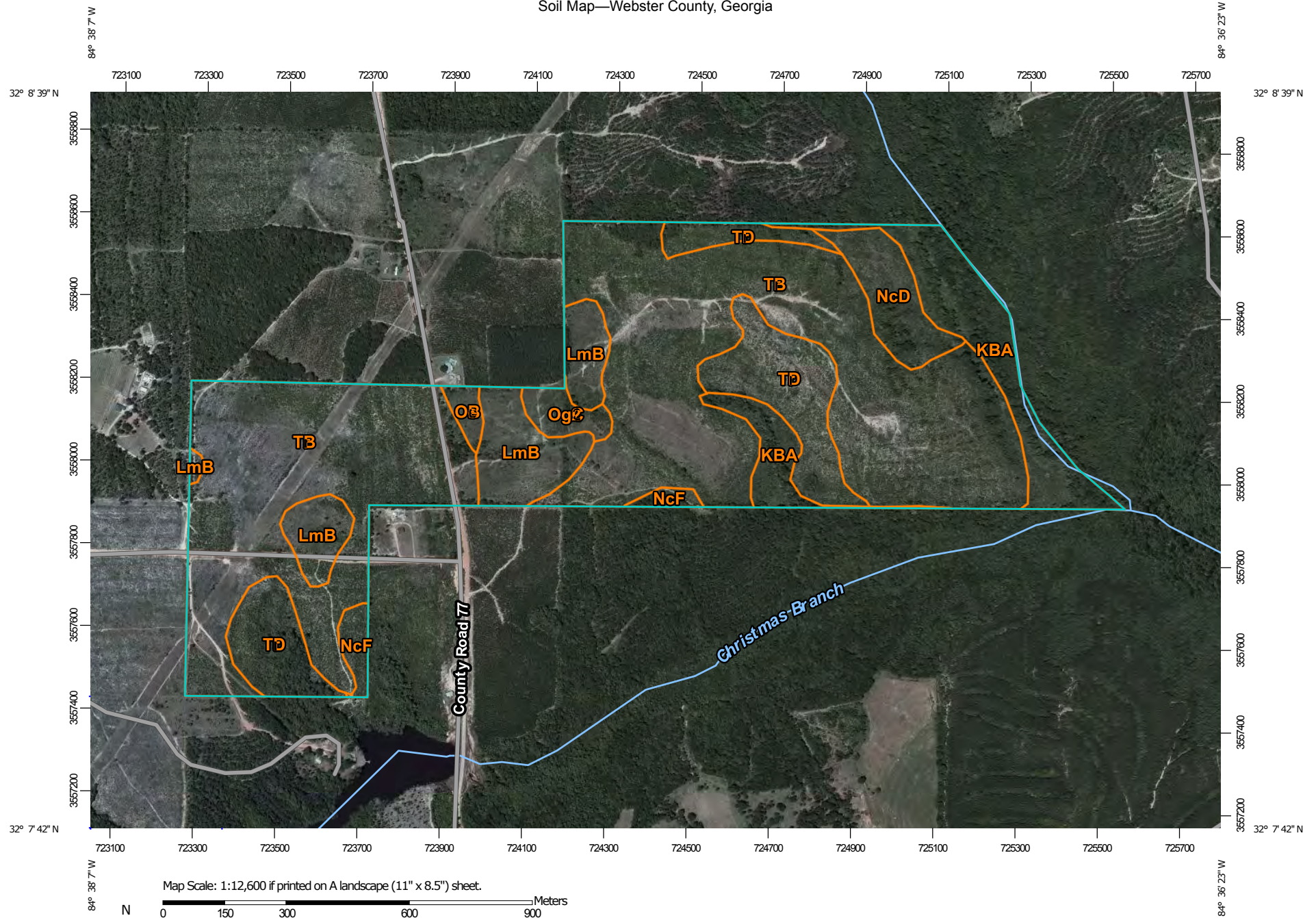
1 inch equals 0.19 miles

0 330 660 1,320 Feet

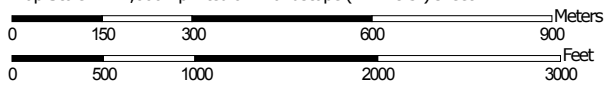


Date: 2/22/2017

Soil Map—Webster County, Georgia



Map Scale: 1:12,600 if printed on A landscape (11" x 8.5") sheet.



Map projection: Web Mercator Corner coordinates: WGS84 Edge tics: UTM Zone 16N WGS84



**Natural Resources
Conservation Service**

Web Soil Survey
National Cooperative Soil Survey

2/22/2017
Page 1 of 3

Map Unit Legend

Webster County, Georgia (GA307)			
Map Unit Symbol	Map Unit Name	Acres in AOI	Percent of AOI
KBA	Kinston and Bibb soils, 0 to 1 percent slopes, frequently flooded	30.2	9.8%
LmB	Lucy loamy sand, 0 to 5 percent slopes	25.9	8.4%
NcD	Nankin-Cowarts complex, 5 to 15 percent slopes	12.0	3.9%
NcF	Nankin-Cowarts complex, 15 to 35 percent slopes	4.6	1.5%
OeB	Orangeburg loamy sand, 2 to 5 percent slopes	2.3	0.8%
OgC2	Orangeburg sandy loam, 5 to 8 percent slopes, moderately eroded	4.6	1.5%
TrB	Troup loamy sand, 0 to 5 percent slopes	191.2	62.3%
TrD	Troup loamy sand, 5 to 15 percent slopes	36.3	11.8%
Totals for Area of Interest		307.0	100.0%

