



KS - Comanche Lewis Ranch

2606.32 acres

\$5,280,000

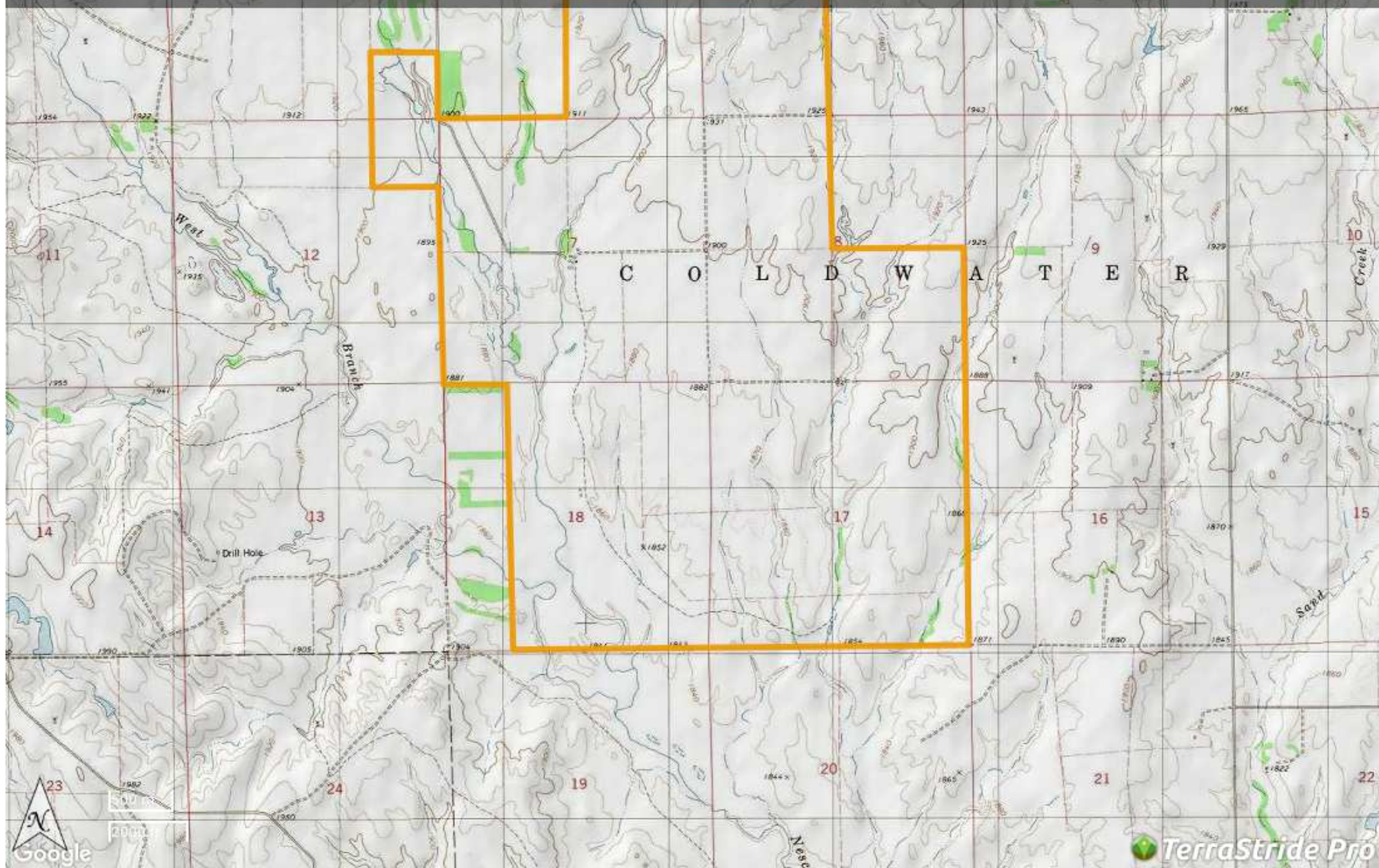
Brown Realty Co

Brad Brown

(318) 680-7809

bbrown@brownrealtyco.com

<http://www.brownrealtyco.com/>



Property Report—KS - Comanche Lewis Ranch

Legend

Feature	Icon	Colors
Boundary		

Description

Deep in the wilds of beautiful Comanche Co, KS lies a whitetail hunting paradise on the East Fork Nescatunga Creek. The creek runs the entire length of the ranch providing precious water for an abundance of wildlife that includes whitetail deer, turkey, quail and other game. Beaver ponds are especially attractive to winter water fowl for additional hunting enjoyment. The ranch has 893 acres enrolled in CRP thru 2022 providing annual income. The remaining acreage is native pasture with plum thickets and scattered trees that provide excellent habitat for wildlife.

Brown Realty Co Jerry Brown, Broker 2189 Hwy 425 Rayville LA 71269 318-728-9544

DISCLAIMER: The information contained herein is as obtained by this broker from sellers, owners, or other sources. This information is considered reliable, neither this broker nor owners make any guarantee, warranty or representation as to correctness of any data or descriptions and the accuracy of such statements. The correctness and / or accuracy of any and all statements should be determined through independent investigation made by the prospective purchaser. Any offer for sale is subject to prior sale, errors and omissions, change of price, terms or other conditions or withdrawal from sale

Generated on: Feb. 20, 2017