

# No Mans Land - Jackson Ranch

Lampasas, County



## Lampasas County The Historic Jackson Ranch No Mans Land Pasture 753± Acres

This tract is located within the Historic Jackson Ranch located approximately 13 miles West of Lampasas, Texas on FM 580 and approximately 63 miles from the Austin, TX City Limits. The No Man's Land/South pasture contains 1.81 miles of Colorado River Frontage. The high cliffs are some 200 feet above the river and overlook scenic Hughes Hollow. The No Mans property abuts the adjacent Saegert Ranch, and a portion of Colorado Bend State park, and the name is taken from the fact that crossing the deep canyon of Hughes Hollow is limited to few vehicles. The property is accessible from 25 acres in the Gated Ranch Subdivision as well as a dedicated access easement through the Jackson Ranch.

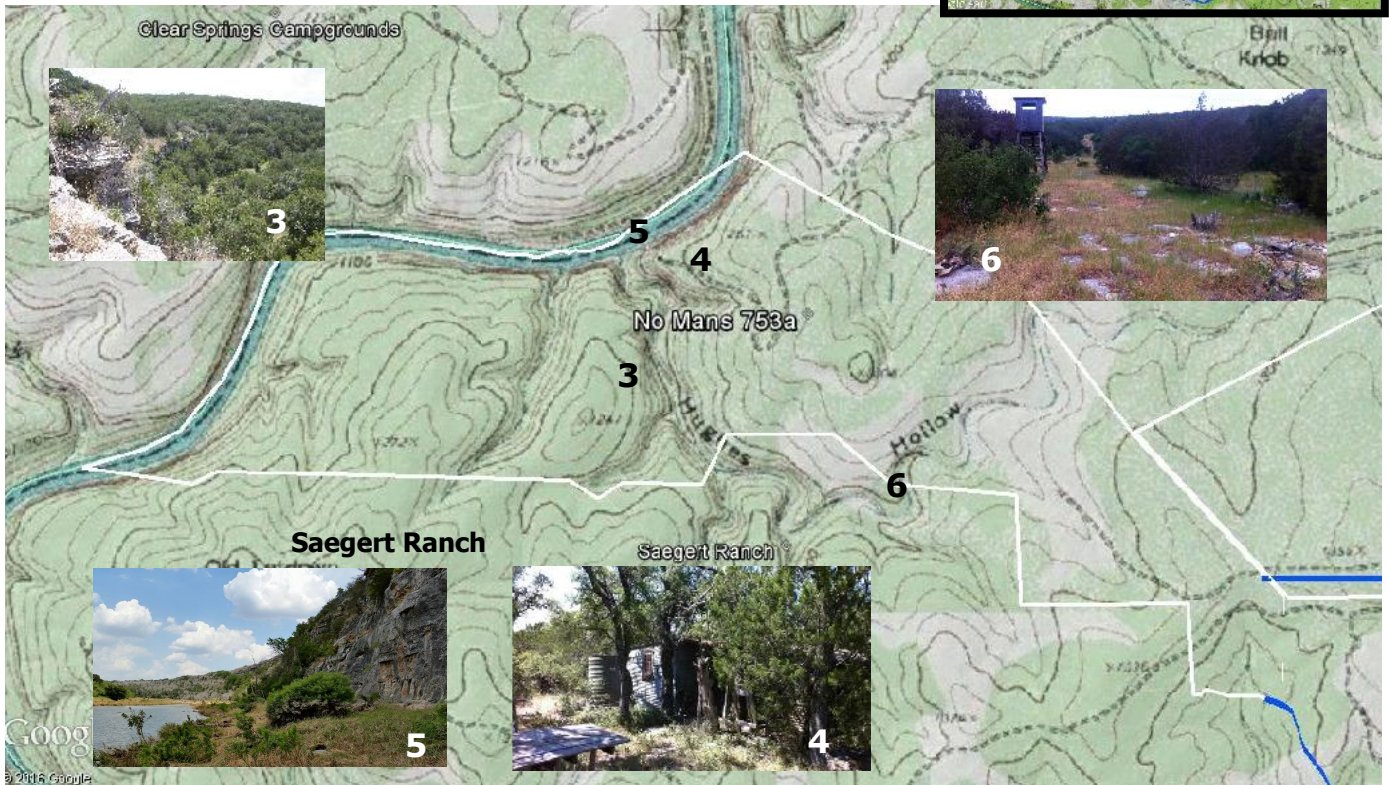
This tract is offered at \$4,500 per acre





## No Mans Land: 790 acres

This tract fronts 1.80 miles of Colorado River Frontage. The high cliffs are some 200 feet above the river and overlook scenic Hughes Hollow. Where the Jackson property abuts the adjacent Saegert Ranch, and a portion of Colorado Bend State Park. The Tract is accessed from both the adjacent gated Smith Ranch and by dedicated easement thru the Jackson Ranch.







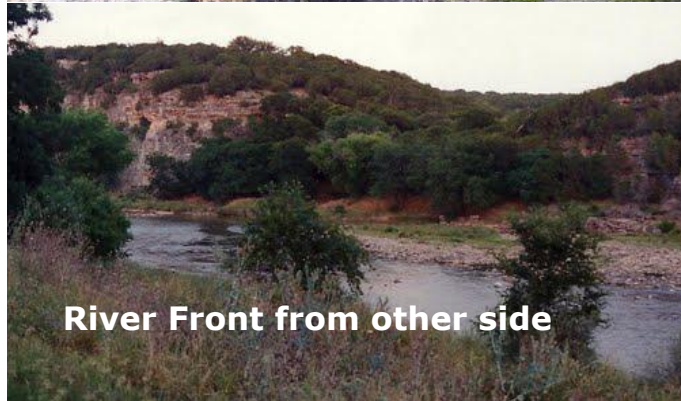
**River from Tin Palace**



**Tin Palace**



**Hughes Hollow**



**River Front from other side**

