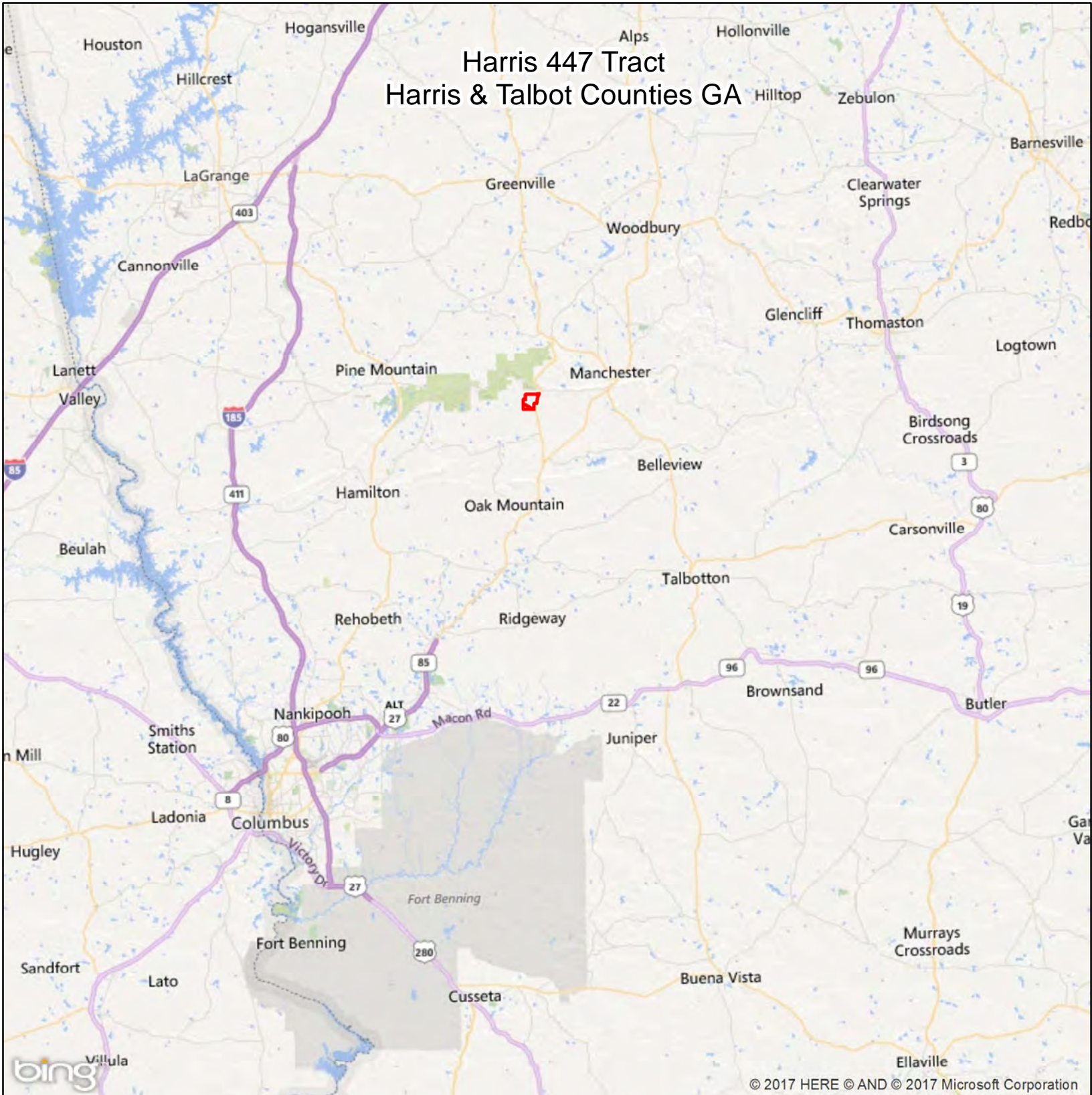


# Harris 447 Tract Harris & Talbot Counties GA



\*Total Acres per Timber Lease: 447.17 Acres  
Stand GIS Acres:  
1. 2008 OFPLb-----124.2 ac  
2. 2010 UPLb-----131.6 ac  
3. 2012 UPLb-----99.0 ac  
4. +-1950BNHP-----63.7 ac  
Open & Woods Roads-----9.2 ac  
\*Total GIS Mapped Acres--427.7 ac

Key:  
OFPLb = Old Field Planted Loblolly Pine  
UPLb = Upland Planted Loblolly Pine  
BNHP = Bottomland Natural Hardwood Pine Mix  
(the pine in bottoms are mostly planted  
lob sawtimber).

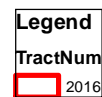


www.matreforestry.com  
Albany, Georgia  
229-639-4973

Mapped by Mike Matre in ArcGIS.  
Disclaimer: Map information is not  
guaranteed. Property lines are  
approximate.

1600 Feet

1 inch equals 7.89 miles  
1 in = 41,667 ft  
1:500,000



Date: 4/13/2017



# Harris 447 Tract Harris & Talbot Counties GA



\*Total Acres per Timber Lease: 447.17 Acres  
Stand GIS Acres:  
1. 2008 OFPLb-----124.2 ac  
2. 2010 UPLb-----131.6 ac  
3. 2012 UPLB-----99.0 ac  
4. +-1950BNHP-----63.7 ac  
Open & Woods Roads-----9.2 ac  
\*Total GIS Mapped Acres--427.7 ac

Key:  
OFPLb = Old Field Planted Loblolly Pine  
UPLb = Upland Planted Loblolly Pine  
BNHP = Bottomland Natural Hardwood Pine Mix  
(the pine in bottoms are mostly planted  
lob sawtimber).



www.matreforestry.com  
Albany, Georgia  
229-639-4973

Mapped by Mike Matre in ArcGIS.  
Disclaimer: Map information is not  
guaranteed. Property lines are  
approximate.

330,000 Feet  
1:57,846

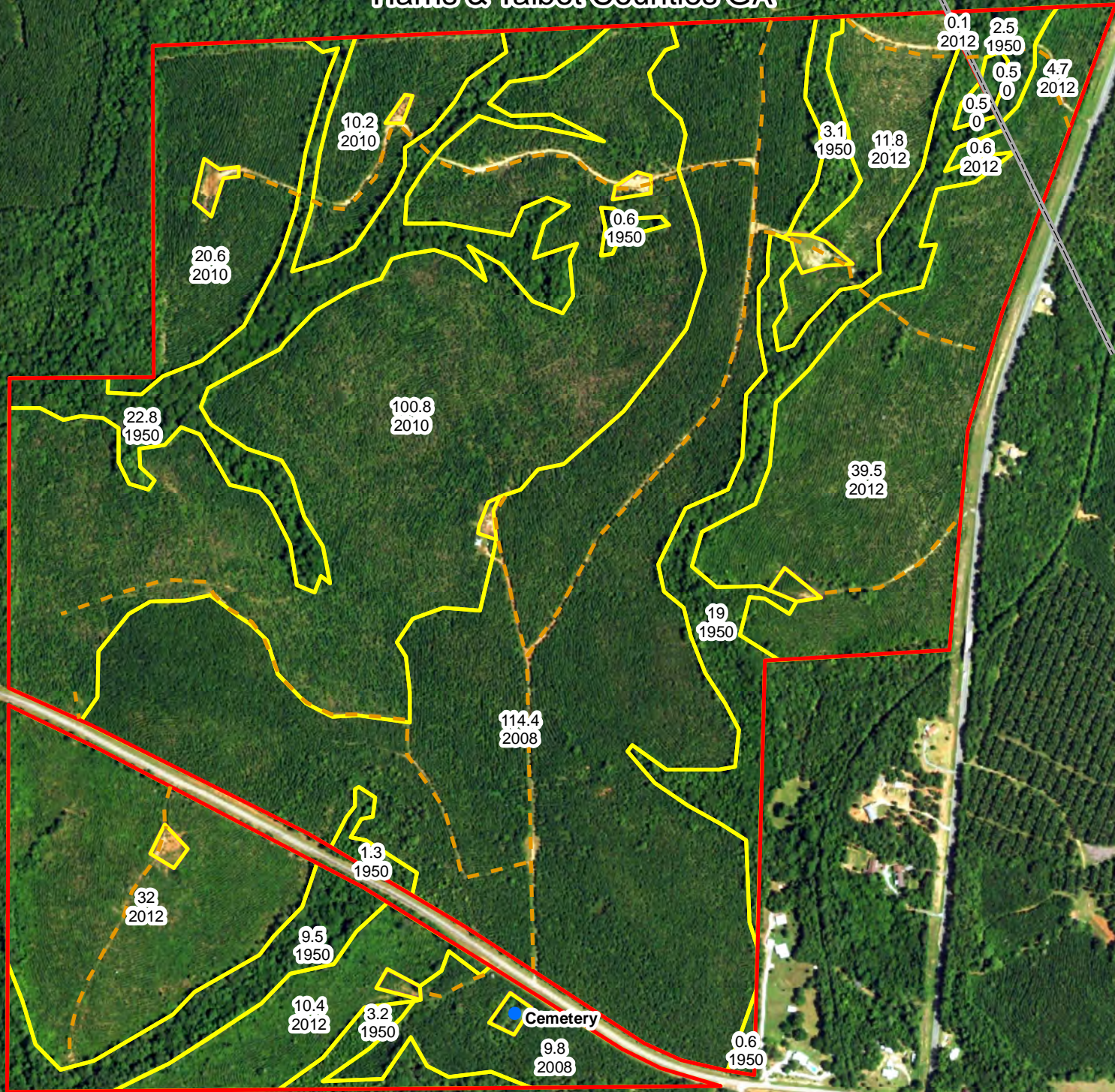
1 inch equals 0.91 miles  
1 in = 4,820 ft  
1:57,846



Date: 4/13/2017



# Harris 447 Tract Harris & Talbot Counties GA



\*Total Acres per Timber Lease: 447.17 Acres

Stand GIS Acres:

1. 2008 OFPLb-----124.2 ac
2. 2010 UPLb-----131.6 ac
3. 2012 UPLb-----99.0 ac
4. +-1950BNHP-----63.7 ac

Open & Woods Roads-----9.2 ac

\*Total GIS Mapped Acres--427.7 ac

Key:

OFPLb = Old Field Planted Loblolly Pine  
UPLb = Upland Planted Loblolly Pine  
BNHP = Bottomland Natural Hardwood Pine Mix  
(the pine in bottoms are mostly planted  
lob sawtimber).

## Legend

### Lines

TractNum, Descrip

- 2016, County Line
- 2016, Woods Roads

### TractNum

- 2016
- Stands
- NonTimber
- Points



www.matreforestry.com  
Albany, Georgia  
229-639-4973

Mapped by Mike Matre in ArcGIS.  
Disclaimer: Map information is not  
guaranteed. Property lines are  
approximate.

0 330 660 1,320 Feet

1 inch equals 0.13 miles

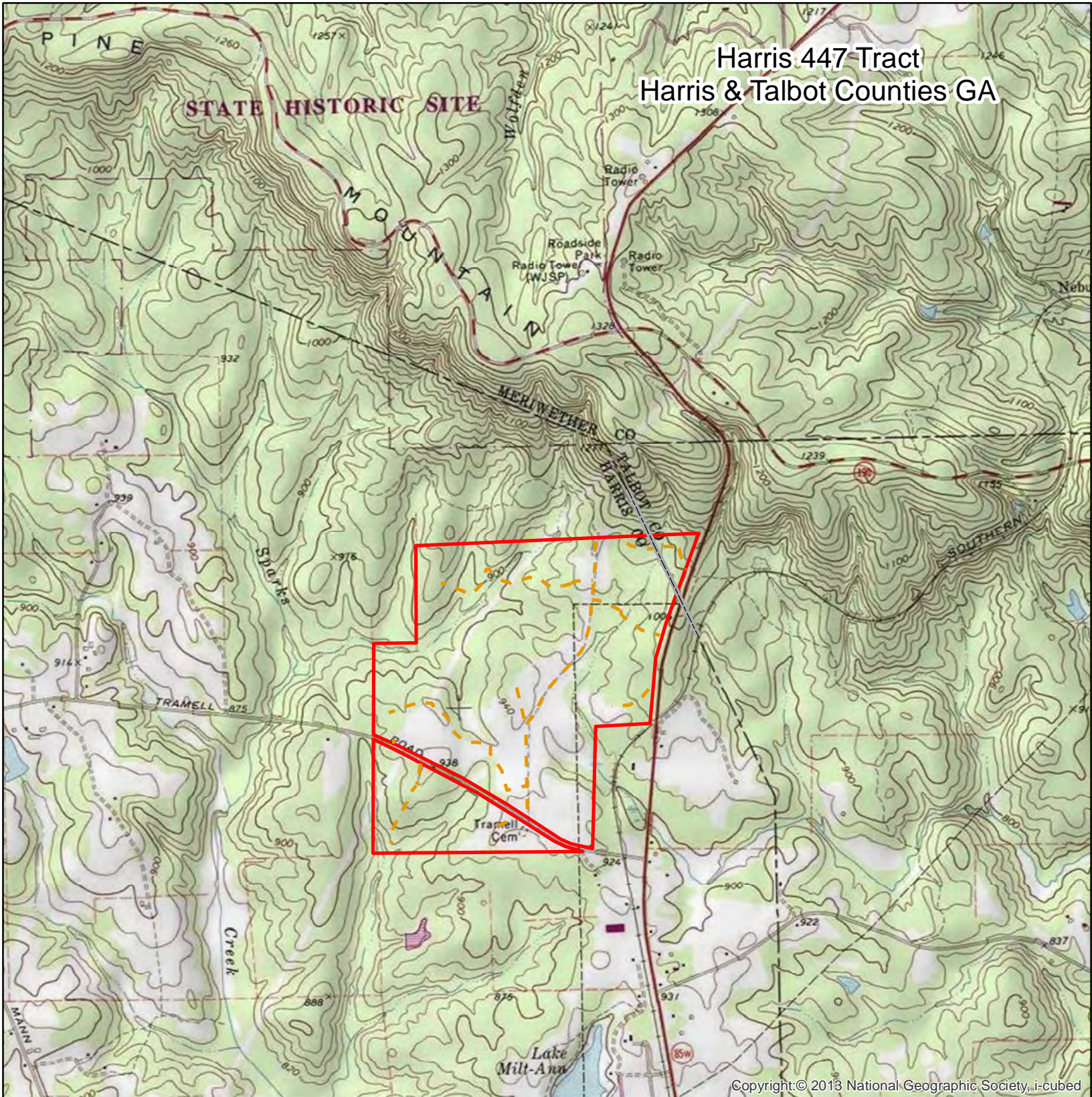
1 in = 660 ft

1:7,920

Date: 4/13/2017



# Harris 447 Tract Harris & Talbot Counties GA



Copyright:© 2013 National Geographic Society, i-cubed

\*Total Acres per Timber Lease: 447.17 Acres  
Stand GIS Acres:  
1. 2008 OFPLb-----124.2 ac  
2. 2010 UPLb-----131.6 ac  
3. 2012 UPLb-----99.0 ac  
4. +-1950BNHP-----63.7 ac  
Open & Woods Roads-----9.2 ac  
\*Total GIS Mapped Acres--427.7 ac

Key:  
OFPLb = Old Field Planted Loblolly Pine  
UPLb = Upland Planted Loblolly Pine  
BNHP = Bottomland Natural Hardwood Pine Mix  
(the pine in bottoms are mostly planted  
lob sawtimber).

Legend	
Lines	
TractNum, Descrip	
2016, County Line	
2016, Woods Roads	
TractNum	
2016	



www.matreforestry.com  
Albany, Georgia  
229-639-4973

Mapped by Mike Matre in ArcGIS.  
Disclaimer: Map information is not  
guaranteed. Property lines are  
approximate.

033660 1,320 Feet



1 inch equals 0.38 miles

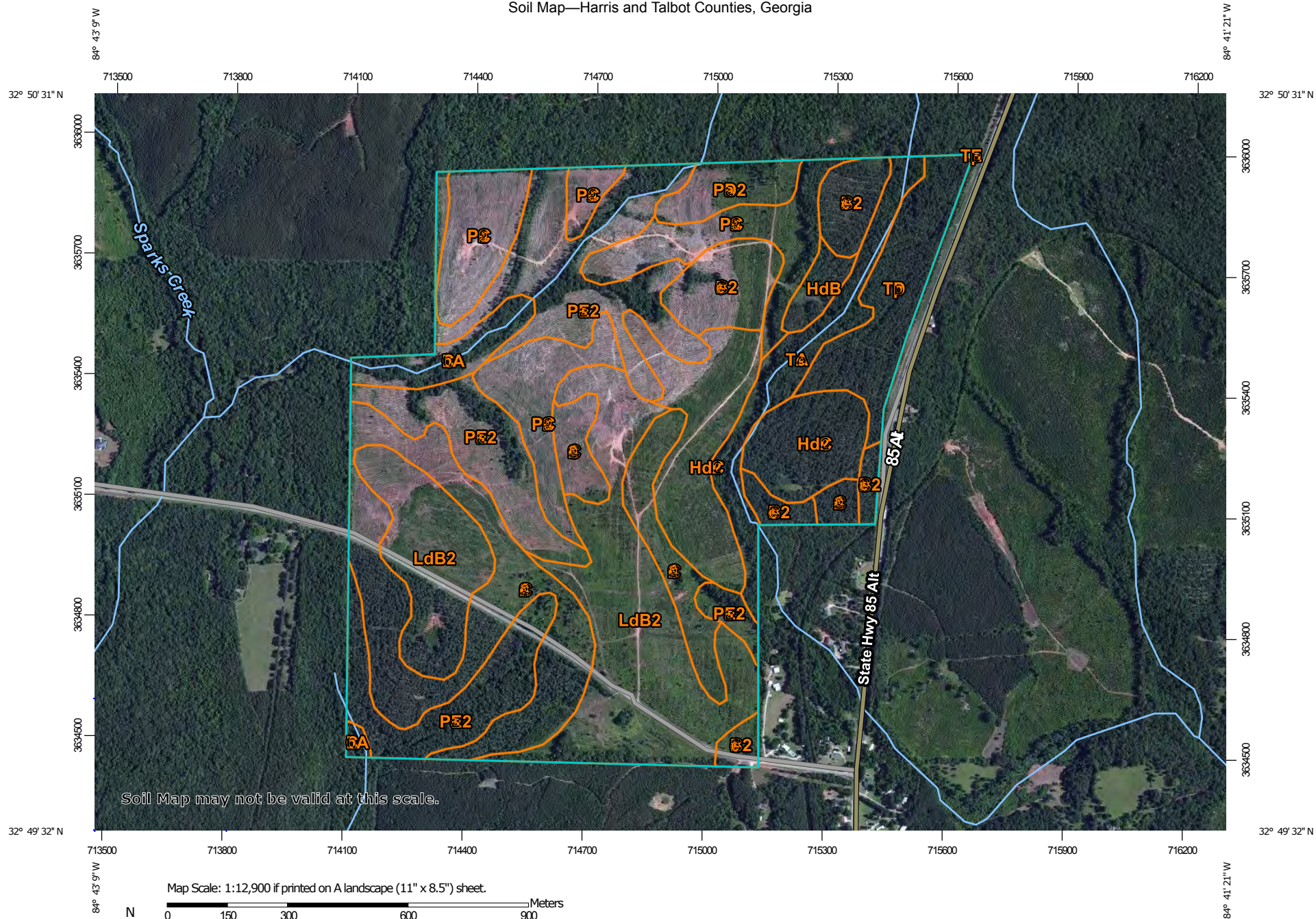
1 in = 2,000 ft

1:24,000

Date: 4/13/2017



# Soil Map—Harris and Talbot Counties, Georgia



**Natural Resources  
Conservation Service**

Web Soil Survey  
National Cooperative Soil Survey

4/13/2017  
Page 1 of 3

## Map Unit Legend

Harris and Talbot Counties, Georgia (GA655)			
Map Unit Symbol	Map Unit Name	Acres in AOI	Percent of AOI
CeB2	Cecil sandy loam, 2 to 6 percent slopes, moderately eroded	28.6	6.5%
CeC2	Cecil sandy loam, 6 to 10 percent slopes, moderately eroded	72.1	16.5%
ChA	Chewacla loam, 0 to 2 percent slopes, frequently flooded	11.1	2.5%
HdB	Hard Labor-Appling complex, 2 to 6 percent slopes	4.7	1.1%
HdC2	Hard Labor-Appling complex, 6 to 10 percent slopes, moderately eroded	43.4	9.9%
LdB2	Lloyd loam, 2 to 6 percent slopes, moderately eroded	85.0	19.4%
PaC2	Pacolet sandy loam, 6 to 10 percent slopes, moderately eroded	54.4	12.4%
PaD2	Pacolet sandy loam, 10 to 15 percent slopes, moderately eroded	9.3	2.1%
PaE2	Pacolet sandy loam, 15 to 25 percent slopes, moderately eroded	84.4	19.3%
ToA	Toccoa sandy loam, 0 to 2 percent slopes, frequently flooded	20.4	4.7%
TpD	Towaliga-Pacolet complex, 6 to 15 percent slopes, stony	23.7	5.4%
TpE	Towaliga-Pacolet complex, 15 to 35 percent slopes, stony	0.0	0.0%
<b>Totals for Area of Interest</b>		<b>437.2</b>	<b>100.0%</b>