

LISTING #11297

13778 Summerset Rd
Indianola, Iowa

PRICE:
\$85,000

WARREN COUNTY LAND FOR SALE

Acres M/L: 10.66

County: Warren

General Area: North of Indianola

School District: Indianola

Taxes: 216.00

Possession: At Closing

Water: Rural



SCOTT KELLY: 515-473-8913
Scott@PeoplesCompany.com



STEVE BRUERE: 515-240-7500
Steve@PeoplesCompany.com

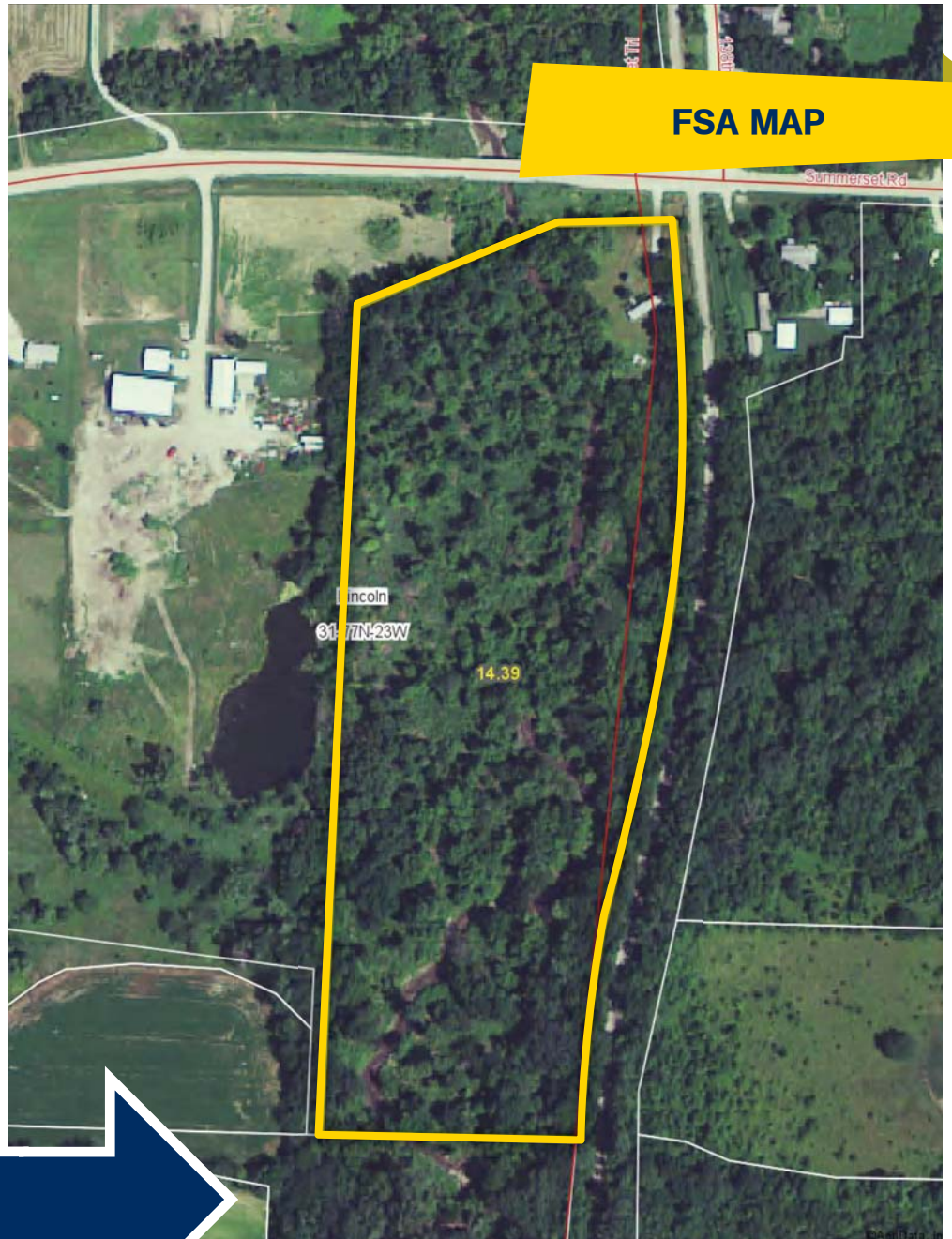


855-800-LAND | www.PeoplesCompany.com

LISTING #11297

10.66 acres m/l timbered recreational site with a creek on hard surface road north of Indianola. Property is situated adjacent to the Summerset Recreational Trail. Property is in flood plain and floodway. No permanent structures will be allowed to be built. Great location for a weekend camping trip or just to get away. Located less than a mile from Hwy 65/69, minutes from Hwy 5 bypass and just a short commute to anywhere in the Des Moines Metro.

FSA MAP



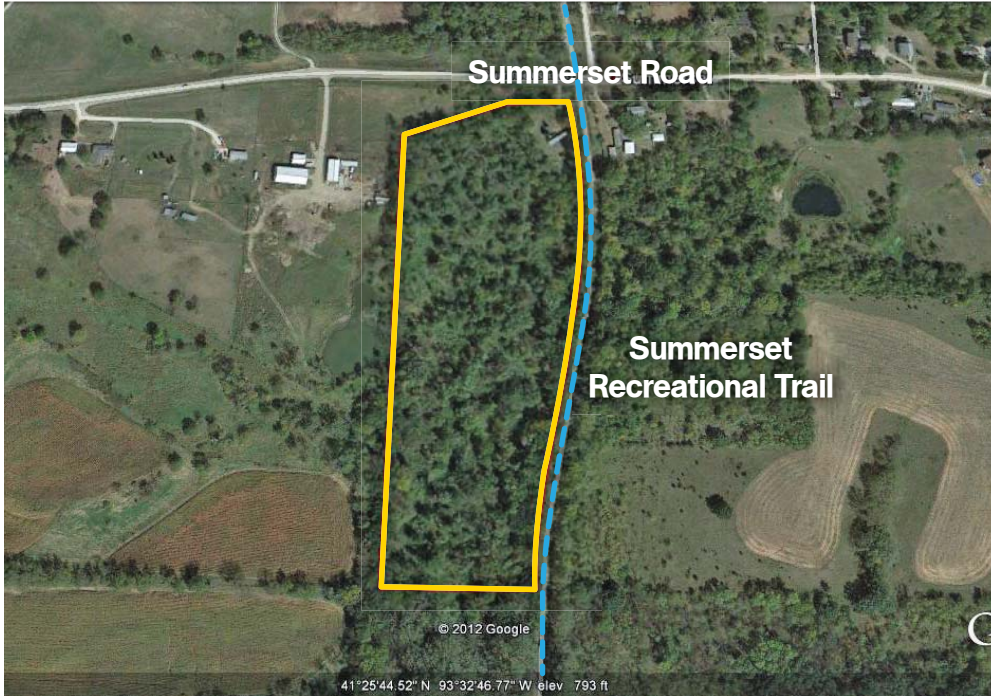
PARCEL NUMBERS

13000319268

13000319845

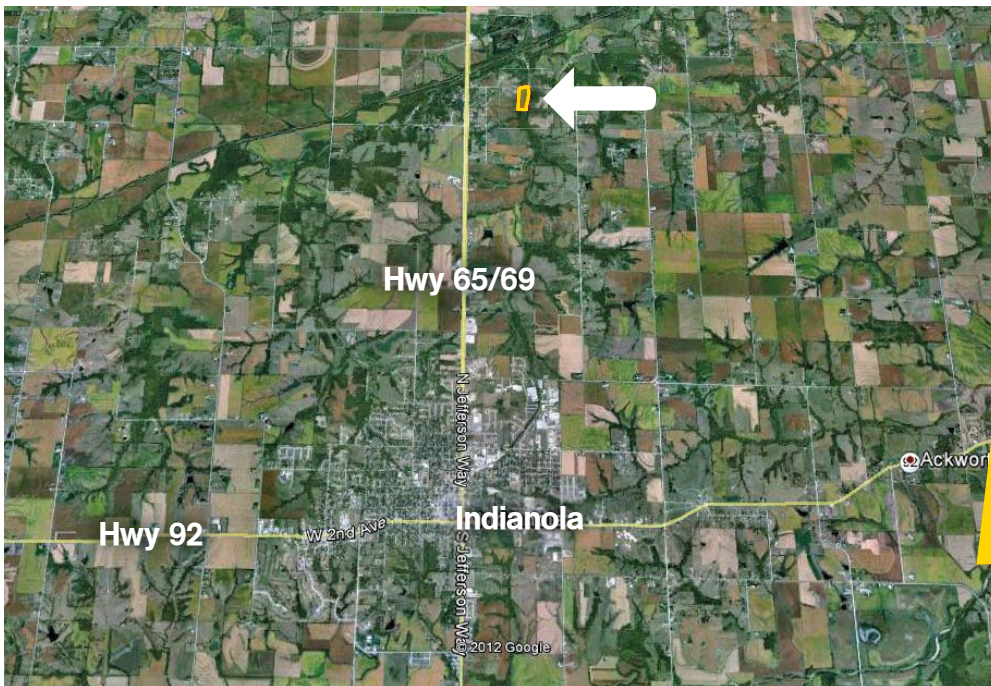


13778 SUMMERSET ROAD INDIANOLA, IOWA



DIRECTIONS

From Indianola, travel north out of town on Hwy 65/69 to Summerset Road. Turn east and continue approximately 0.7 miles. Property is situated on the south side of Summerset Road before the Summerset Recreational Trail.



FOR MORE INFO

Please visit our website:
www.PeoplesCompany.com
Listing #11297

Seller would consider a contract sale. Contact Agent for details.



SCOTT KELLY: 515-473-8913
Scott@PeoplesCompany.com



STEVE BRUERE: 515-240-7500
Steve@PeoplesCompany.com



WARREN COUNTY LAND FOR SALE



© 2017 Peoples Company We obtained this information from sources we believe to be reliable. However, we have not verified its accuracy and make no guarantee, warranty or representation about it. It is submitted subject to the possibility of errors, omissions, change of price, rental or other conditions, prior sale, lease or financing, or withdrawal without notice. We include projections, opinions, assumptions or estimates for example only and they may not represent current or future performance of the property. You and your tax and legal advisors should conduct your own investigation of the property and transaction.



SCOTT KELLY: 515-473-8913
Scott@PeoplesCompany.com



STEVE BRUERE: 515-240-7500
Steve@PeoplesCompany.com



12119 Stratford Drive, Suite B
Clive, Iowa 50325