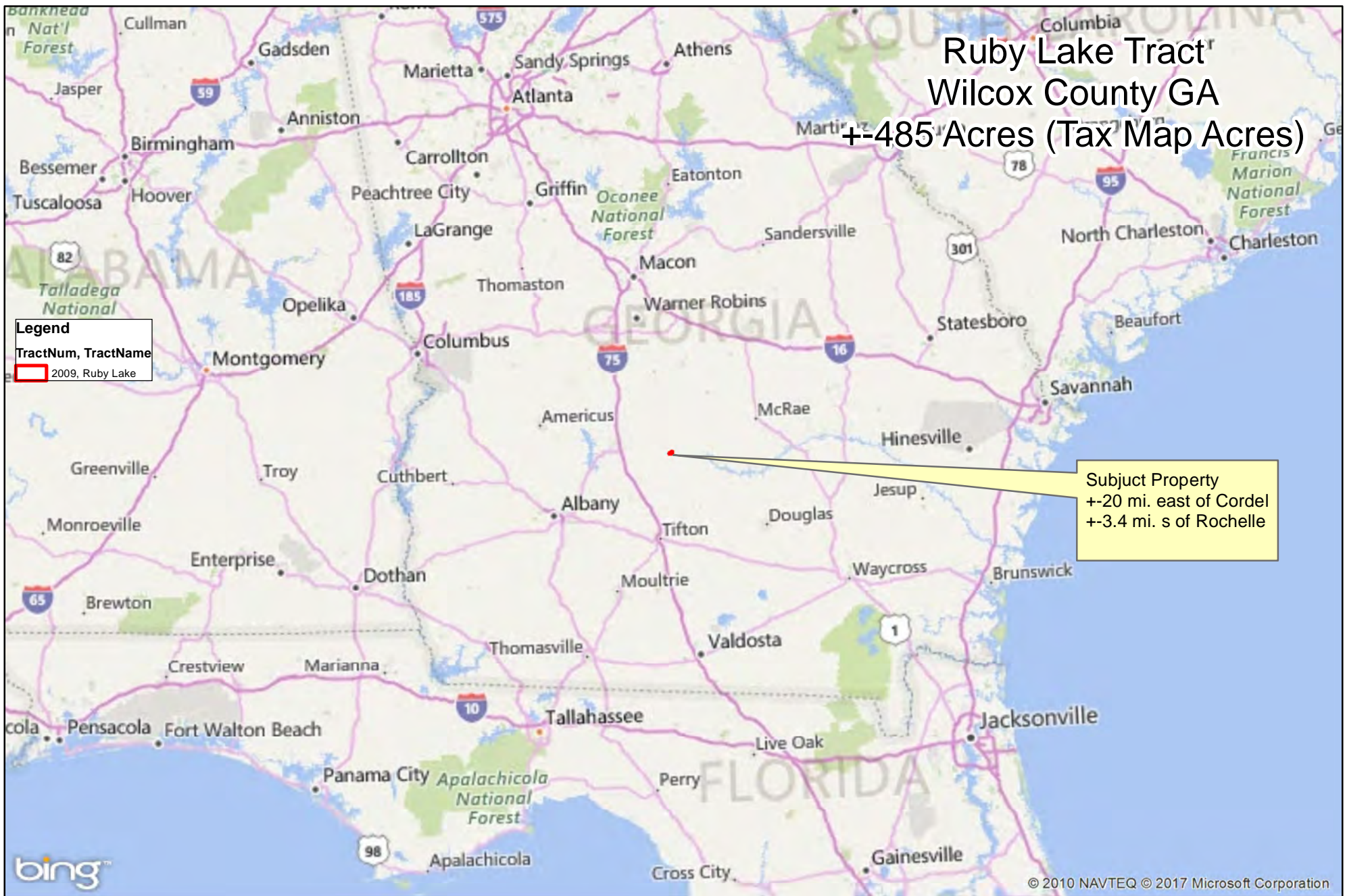


Ruby Lake Tract Wilcox County GA +485 Acres (Tax Map Acres)



1600 Feet

Date: 1/25/2017

1 inch equals 47.35 miles

1 in = 250,000 ft

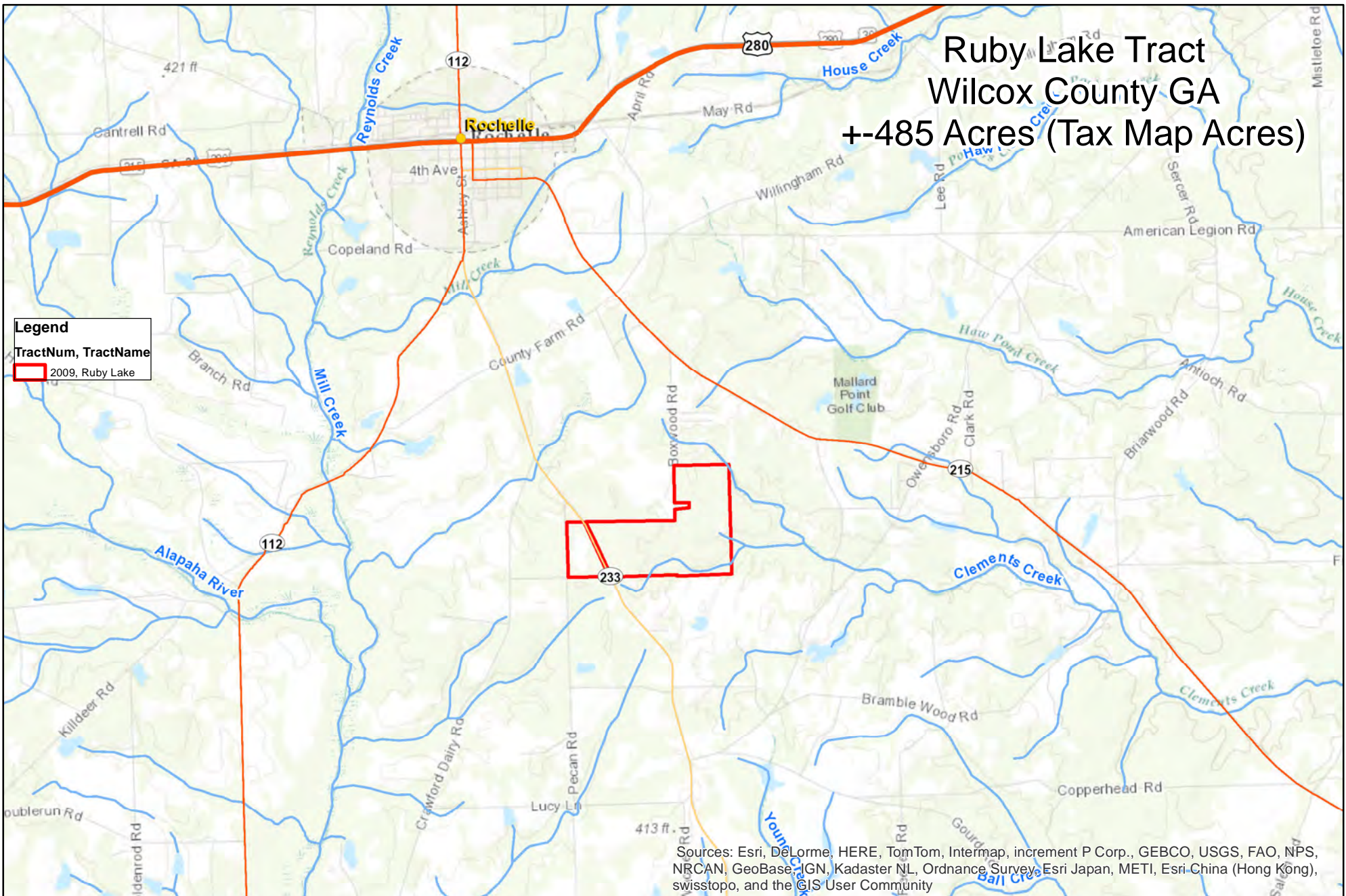
1:3,000,000



www.matreforestry.com
Albany, Georgia
229-639-4973
www.matreforestry.com

Mapped by Mike Matre in ArcGIS.
Disclaimer: Map information is not guaranteed and
is intended for management purposes only.

Ruby Lake Tract Wilcox County GA +-485 Acres (Tax Map Acres)



Sources: Esri, DeLorme, HERE, TomTom, Intermap, increment P Corp., GEBCO, USGS, FAO, NPS, NRCAN, GeoBase, IGN, Kadaster NL, Ordnance Survey, Esri Japan, METI, Esri China (Hong Kong), swisstopo, and the GIS User Community

3660 Feet

Date: 1/25/2017

1 inch equals 1.04 miles

1 in = 5,513 ft

1:66,157



www.matreforestry.com
 Albany, Georgia
 229-639-4973
www.matreforestry.com

Mapped by Mike Matre in ArcGIS.
 Disclaimer: Map information is not guaranteed and
 is intended for management purposes only.

Legend

TractNum, TractName

2009, Ruby Lake

StandID, Label

2009110, OFPSLthst

2009120, OFPLLpm

2009310, LPSLthst

2009320, LPSLpw

2009330, LPLLpm

2009400, BMIXst

TractNum, Label

2009, Shop

2009, R/Wpwr

2009, NatPnd

2009, Cabin

2009, Ruby Lake

2009, <Null>

StandID	Label	Acres +/-	Percent
2009110	OFPSLthst	268.8	55.3%
2009120	OFPLLpm	63.0	13.0%
2009310	LPSLthst	49.6	10.2%
2009320	LPSLpw	11.1	2.3%
2009330	LPLLpm	21.5	4.4%
2009400	BMIXst	44.1	9.1%
0	MiscNT	9.2	1.9%
0	R/Wpwr	8.9	1.8%
0	Ruby Lake	7.0	1.4%
0	Cabin	1.1	0.2%
0	Shop & Equip	0.8	0.2%
0	NatPnd	0.8	0.2%
		485.9	100.0%

Info below as of 1/25/2017

Key:	Site	Origin	Dominant Species	Harvest	Years Planted +/-
OFPSLthst	Old-Field	Planted	Slash	Once	1980-1995
OFPLLpm	Old-Field	Planted	Longleaf	Thinned Once	2008-2009
LPSLthst	Lowland	Planted	Slash	Thinned Once	1980-1995
LPSLpw	Lowland	Planted	Slash	Ready for 1st Thin	2000
LPLLpm	Lowland	Planted	Longleaf		2008-2009
BMIXst	Bottom	Mixed	Mixed		Natural
MiscNT	Misc. Non Timbered/Open				
R/Wpwr	Right of Way, Power				
Ruby Lake	Ruby Lake				
Cabin	Cabin Area				
Shop & Equip	Shop & Equip				
NatPnd	Natural Pond				

Ruby Lake Tract Wilcox County GA +/-485 Acres (Tax Map Acres)



0 330 660 1,320 Feet

Date: 1/25/2017

1 inch equals 0.19 miles

1 in = 1,000 ft

1:12,000

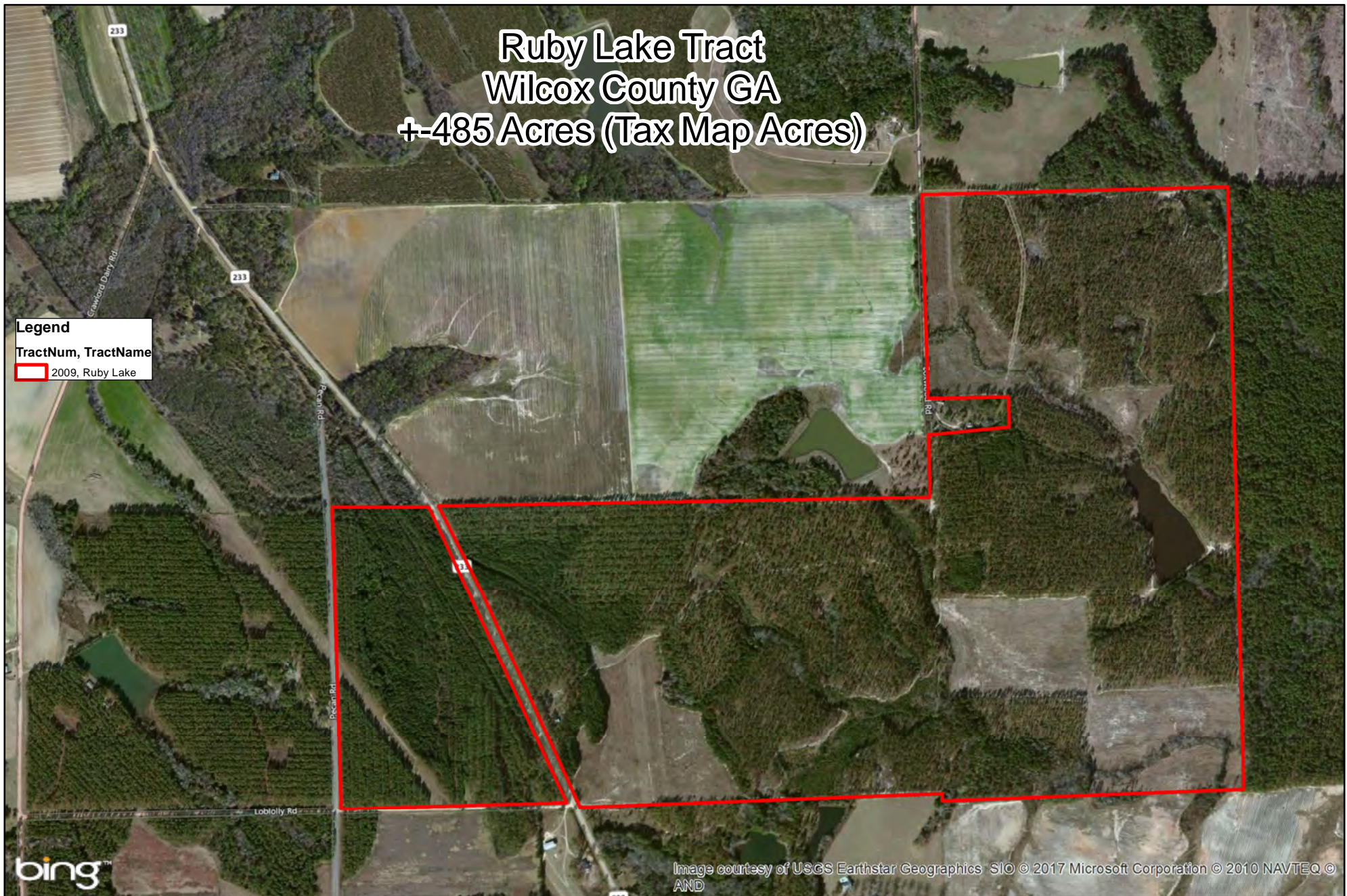


www.matreforestry.com
Albany, Georgia
229-639-4973
www.matreforestry.com

Mapped by Mike Matre in ArcGIS.
Disclaimer: Map information is not guaranteed and
is intended for management purposes only.

Ruby Lake Tract Wilcox County GA +-485 Acres (Tax Map Acres)

Legend
TractNum, TractName
2009, Ruby Lake



0 330 660 1,320 Feet

Date: 1/25/2017

1 inch equals 0.19 miles

1 in = 1,000 ft


1:12,000

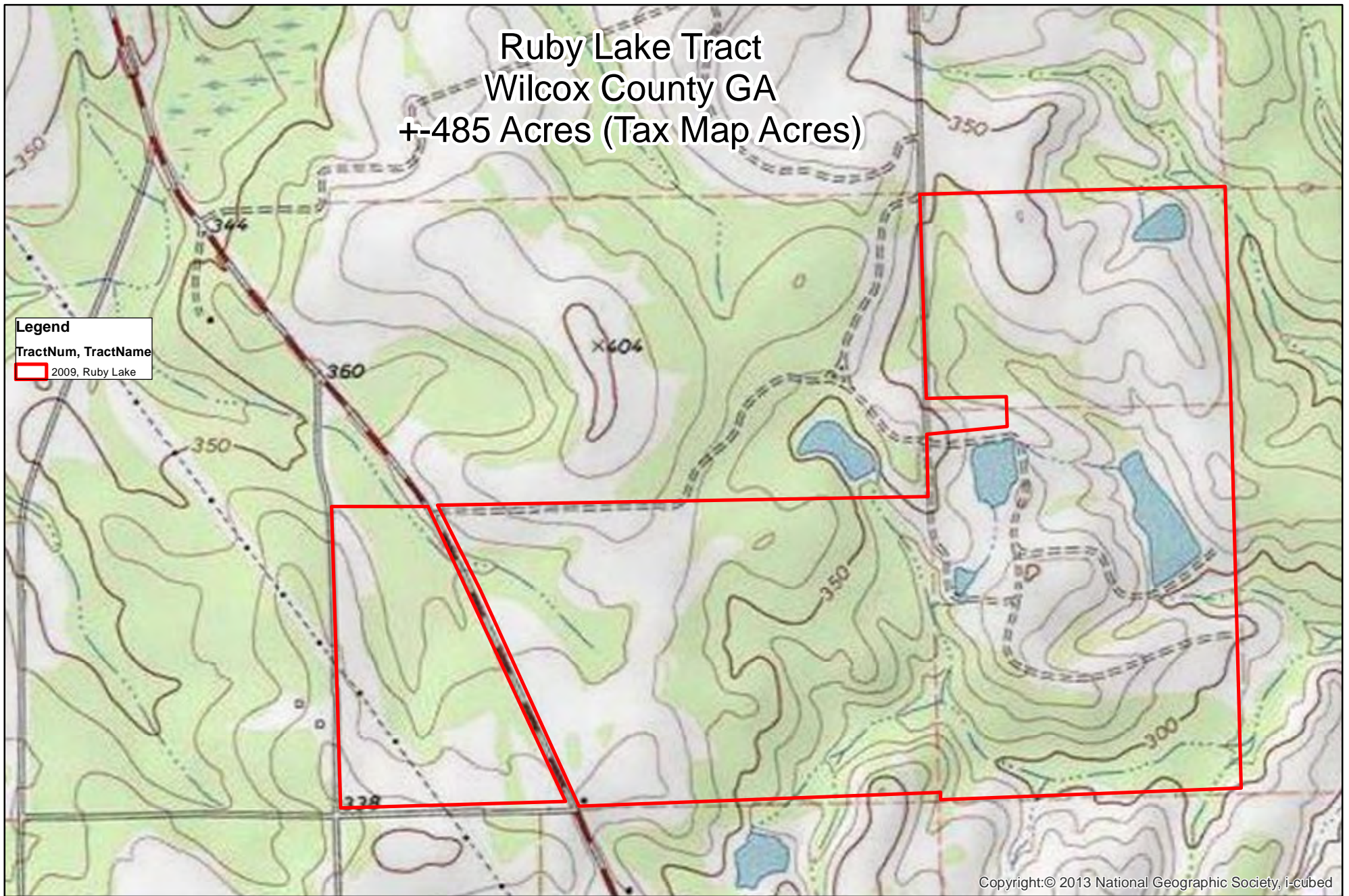


www.matreforestry.com
Albany, Georgia
229-639-4973
www.matreforestry.com


Mapped by Mike Matre in ArcGIS.
Disclaimer: Map information is not guaranteed and
is intended for management purposes only.

Ruby Lake Tract
Wilcox County GA
+-485 Acres (Tax Map Acres)

Legend
TractNum, TractName
 2009, Ruby Lake



Copyright:© 2013 National Geographic Society, i-cubed

0 330 660 1,320 Feet


Date: 1/25/2017

1 inch equals 0.19 miles

1 in = 1,000 ft

1:12,000



www.matreforestry.com
Albany, Georgia
229-639-4973
www.matreforestry.com

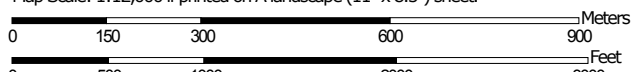
Mapped by Mike Matre in ArcGIS.
Disclaimer: Map information is not guaranteed and
is intended for management purposes only.

Soil Map—Pulaski and Wilcox Counties, Georgia
(Ruby Lake Tract)



Soil Map may not be valid at this scale.

Map Scale: 1:12,000 if printed on A landscape (11" x 8.5") sheet.



Map projection: Web Mercator Corner coordinates: WGS84 Edge tics: UTM Zone 17N WGS84



Natural Resources
Conservation Service

Web Soil Survey
National Cooperative Soil Survey

1/25/2017
Page 1 of 4

Map Unit Legend

#1, Pulaski and Wilcox Counties, Georgia (GA650)			
Map Unit Symbol	Map Unit Name	Acres in AOI	Percent of AOI
AeB	Ailey loamy sand, 0 to 5 percent slopes	12.4	2.6%
BO	Bibb and Osier soils, frequently flooded	13.5	2.8%
BtB	Blanton sand, 0 to 5 percent slopes	3.6	0.7%
CwB	Cowarts-Nankin-Ailey loamy sands, 2 to 5 percent slopes	130.8	27.0%
DoB	Dothan loamy sand, 2 to 5 percent slopes	5.0	1.0%
FuB	Fuquay loamy sand, 0 to 5 percent slopes	34.5	7.1%
FuC	Fuquay loamy sand, 5 to 8 percent slopes	1.2	0.2%
NaC	Nankin-Cowarts-Ailey loamy sands, 5 to 8 percent slopes	105.8	21.8%
NsD	Nankin-Cowarts-Susquehanna complex, 8 to 15 percent slopes	1.4	0.3%
PeA	Pelham loamy sand, 0 to 2 percent slopes	10.2	2.1%
PfA	Pelham loamy sand, occasionally flooded	52.2	10.8%
StA	Stilson loamy sand, 0 to 2 percent slopes	6.2	1.3%
SuC	Susquehanna sandy loam, 5 to 12 percent slopes	5.7	1.2%
TfB	Tifton loamy sand, 2 to 5 percent slopes	27.7	5.7%
W	Water	9.3	1.9%
Subtotals for #1		419.5	86.5%
Totals for Area of Interest		485.0	100.0%

#2, Pulaski and Wilcox Counties, Georgia (GA650)			
Map Unit Symbol	Map Unit Name	Acres in AOI	Percent of AOI
BO	Bibb and Osier soils, frequently flooded	0.7	0.1%
DoB	Dothan loamy sand, 2 to 5 percent slopes	8.0	1.6%
FuB	Fuquay loamy sand, 0 to 5 percent slopes	1.4	0.3%
FuC	Fuquay loamy sand, 5 to 8 percent slopes	2.4	0.5%