

Sonny Todd Real Estate

***301 West First, P.O. Box 788, Big Timber, MT 59011
(406) 932-6668 or (406) 932-1031 Fax: (406) 932-4838
info@sonnytoddrealestate.com ~ www.sonnnytoddrealestate.com
Toll Free: (866) 932-1031***



308 Stock Street

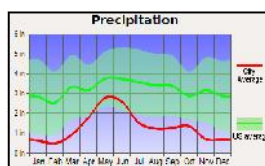
Big Timber, Montana

\$163,000.

Great rancher style home. The main level has 2 bedrooms and 1 1/2 baths. In the basement there is one bedroom with closet and another without a closet used for a bedroom. Neither have an egress windows. The home has a large yard with underground sprinklers. There is an attached 1 car garage.

***Mary Ann Duffey
Cell (406) 930-6607***

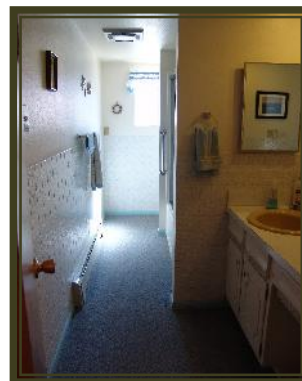
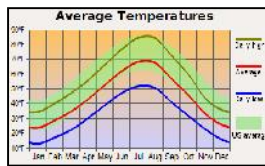




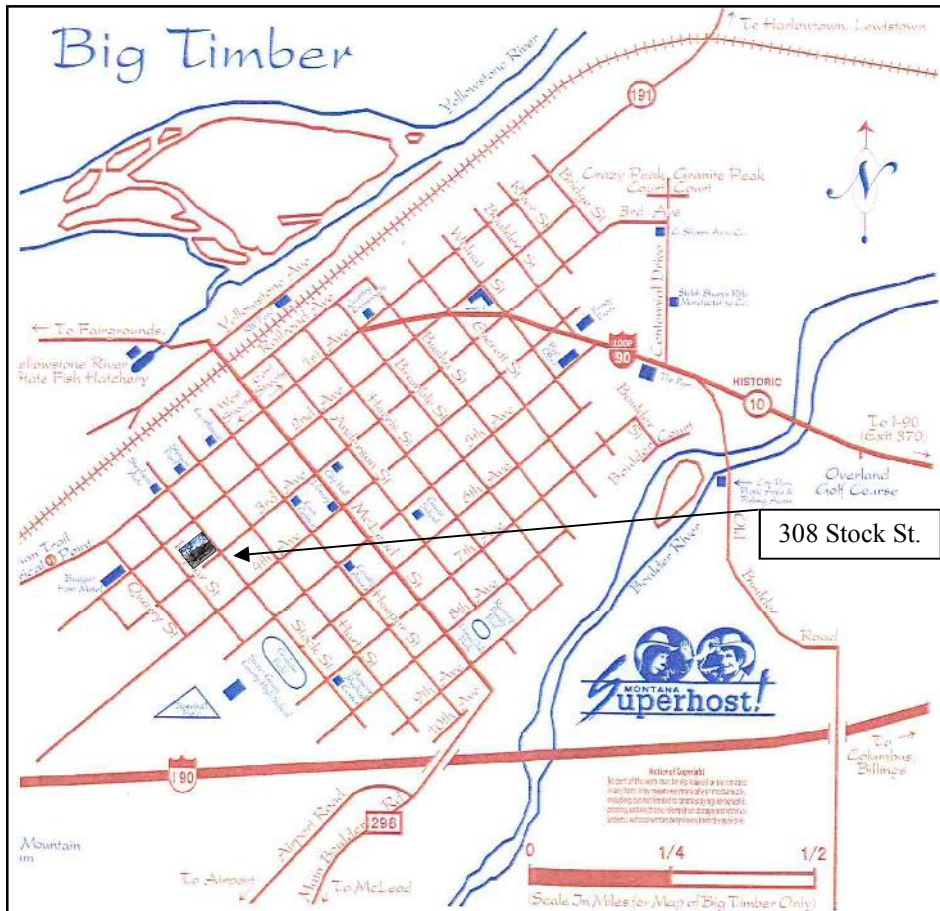
Taxes: \$1,315

Elevation: 4,089'





A small, comfortable Montana town, Big Timber has much to offer.



BIG TIMBER: Located at the confluence of the Yellowstone and Boulder River, Big Timber is the Sweet Grass County seat and services as the support system to the areas cattle ranching community and recreation industry. Big Timber features a school system which offers K-12, a hospital, clinic, nursing home, Assisted Living, optometrist, dentist, beauty shops, a quilt shop, golf course, churches, grocery and clothing stores, museums, art galleries, establishments offering fine food from the nationally acclaimed dining at "The Grand Hotel", to casual meals at the Frosty Freez, motels, bed and breakfasts, movie theater and a paved airport capable of facilitating most any private aircraft. Big Timber has much to offer as a small comfortable Montana town.

