



808 Stock Street

Big Timber, Montana

\$249,000.

Offered Exclusively By:

Sonny Todd Real Estate

301 W First, PO Box 788

Big Timber, MT 59011

Office: (406) 932-6668

(406) 932-1031

Toll Free: 1-866-932-1031

Fax: (406) 932-4838

info@sonnytoddrealestate.com

www.sonnytoddrealestate.com

808 Stock Street Big Timber, Montana



This 3BR/2BA home has been lightly lived in since it was built in 2007. Nice open floor plan with vaulted ceilings, all living on one level, recessed lighting and great kitchen with stainless appliances. The master suit has a walk in closet and the bath has a beautifully tiled shower. Back yard is fenced and has a timber framed covered patio off the dining area. There is a bonus room above the garage that would make a great office, work-out space or TV room. The 12,719 sq. ft. lot is landscaped with great outside spaces.



Mary Ann Duffey
(406) 930-6607



DESCRIPTION:

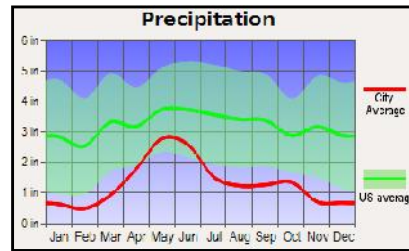
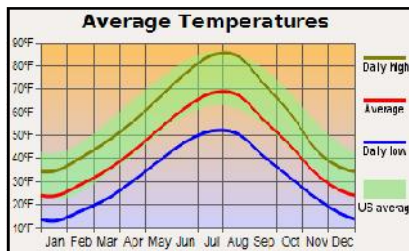
Bedrooms: 3

Baths : 2

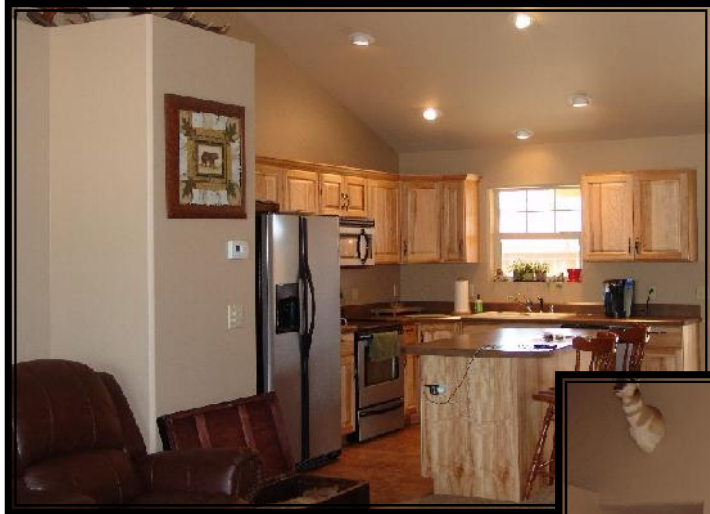
1,574 sq. ft.

Attached garage

12,724 sq. ft. lot



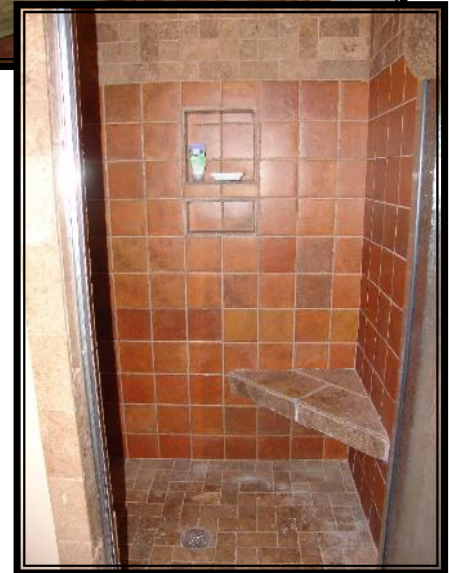
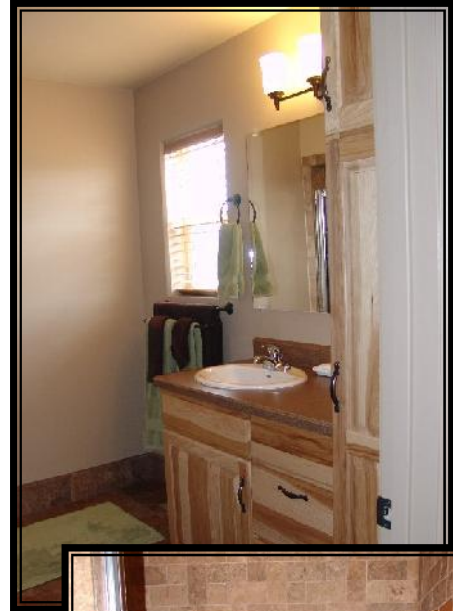
Notice: The data contained herein was obtained from the owner and other sources deemed reliable, but is not guaranteed by agents. Prospective purchasers are advised to examine the facts to their own satisfaction. This offering is subject to change of price and terms, lease, prior sale or withdrawal from the market, without notice.



Taxes: \$1,786

Elevation: 4,089'









SUMMARY & CONCLUSION:

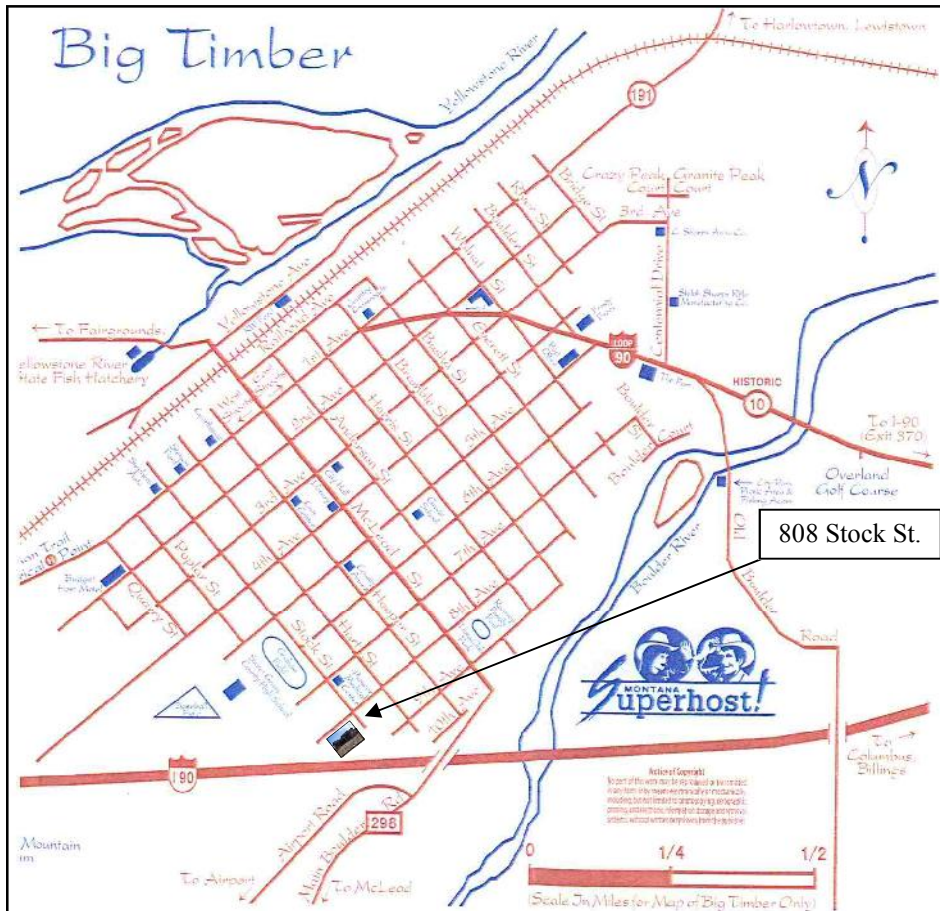
This area has beautiful views of the surrounding mountain ranges, access to the most sought after fishing in the country, local wildlife and a golf course nearby. Recreational opportunities in this area are endless.

The community of Big Timber is becoming one of the most sought after areas in Montana because of our rural culture and quality western way of life. We welcome you to become part of “The Best Last Place”, Montana.

PRICE: \$249,000.

Notice: The data contained herein was obtained from the owner and other sources deemed reliable, but is not guaranteed by agents. Prospective purchasers may be asked to provide a financial reference prior to a showing and are advised to examine the facts to their own satisfaction. This offering is subject to change of price and terms, lease, prior sale or withdrawal from the market, without notice.

A small, comfortable Montana town, Big Timber has much to offer.



BIG TIMBER: Located at the confluence of the Yellowstone and Boulder River, Big Timber is the Sweet Grass County seat and serves as the support system to the areas cattle ranching community and recreation industry. Big Timber features a school system which offers K-12, a hospital, clinic, nursing home, Assisted Living, optometrist, dentist, beauty shops, a quilt shop, golf course, churches, grocery and clothing stores, museums, art galleries, establishments offering fine food from the nationally acclaimed dining at "The Grand Hotel", to casual meals at the Frosty Freez, motels, bed and breakfasts, movie theater and a paved airport capable of facilitating most any private aircraft.

