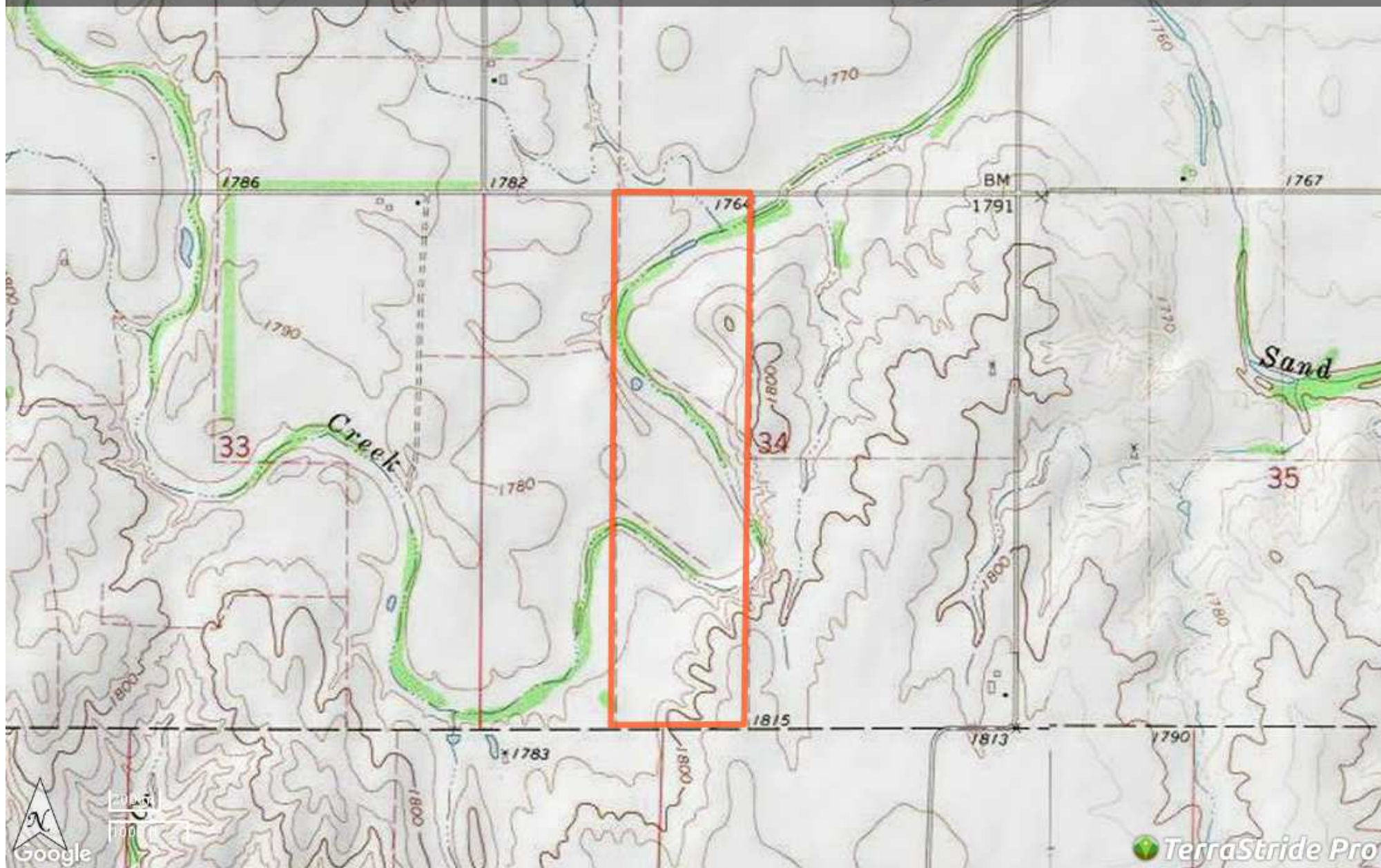




KS - Barber Thom 160 acres +/-
161.73 acres
\$304,000

Brown Realty Co
Cliff and Gayla McKinney
(620) 886-1006
cgmc5bar@outlook.com
<http://www.brownrealtyco.com/>



Property Report—KS - Barber Thom 160 acres +/-

Legend

Feature	Icon	Colors
Boundary		

Description

Creek runs approx 3/4 way thru property, small pit pond, plum bushes, good grass cover for wildlife property surrounded by tillable acres making good food sources for wildlife. Brown Realty Co Jerry Brown, Broker 2189 Hwy 425 Rayville LA 71269 318-728-9544

DISCLAIMER: The information contained herein is as obtained by this broker from sellers, owners, or other sources. This information is considered reliable, neither this broker nor owners make any guarantee, warranty or representation as to correctness of any data or descriptions and the accuracy of such statements. The correctness and / or accuracy of any and all statements should be determined through independent investigation made by the prospective purchaser. Any offer for sale is subject to prior sale, errors and omissions, change of price, terms or other conditions or withdrawal from sale

Generated on: Jan. 24, 2017