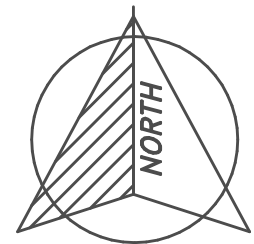


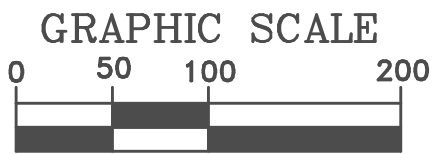
FAIR HAVEN FARMS MINOR SUBDIVISION

SECTION 31, TOWNSHIP 30 SOUTH, RANGE 22 EAST,
HILLSBOROUGH COUNTY, FLORIDA

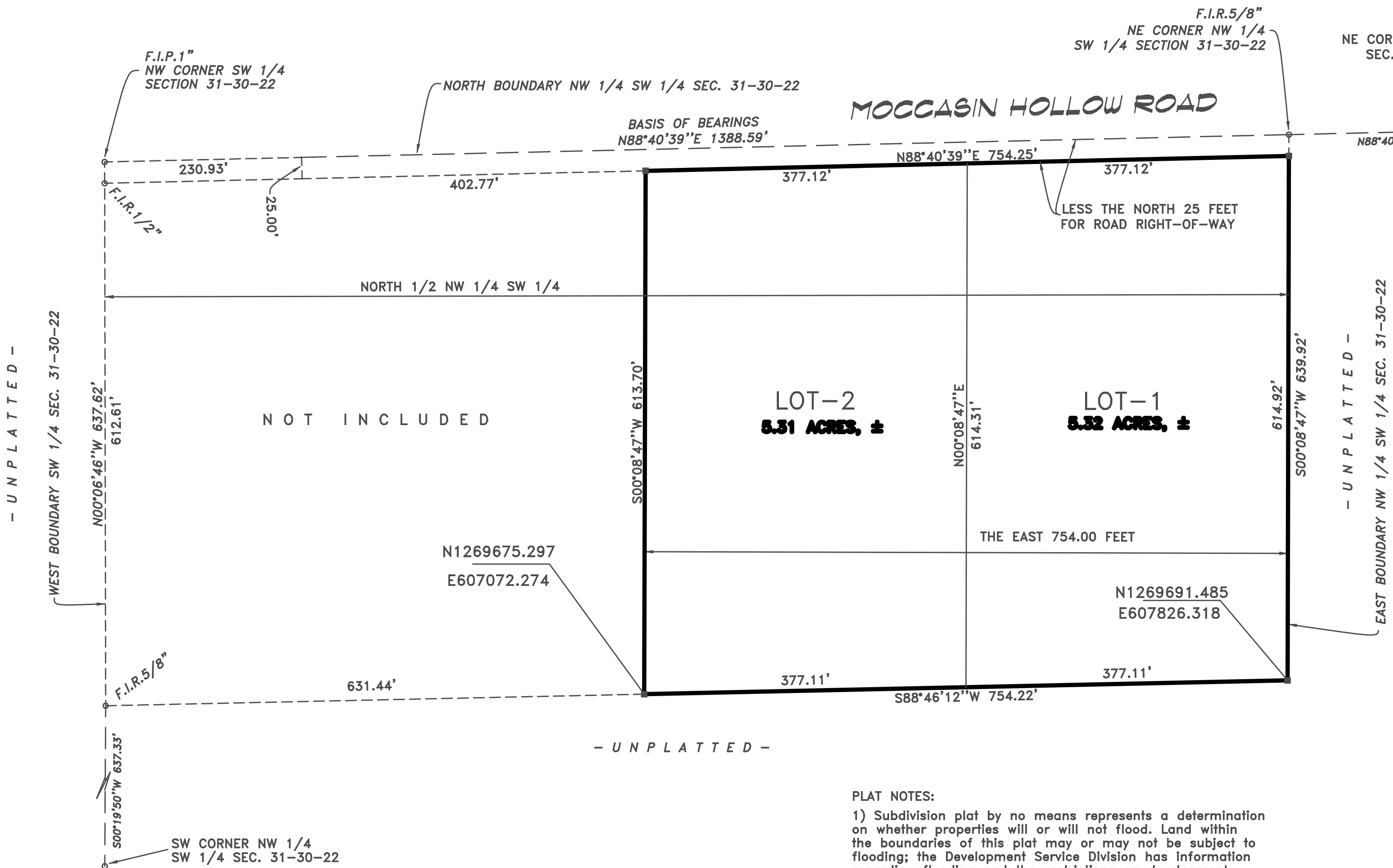
PLAT LEGEND	
■	= SET (P.R.M.) PERMANENT REFERENCE MONUMENT, 4"x4" STAMPED PLS 4529
⊙	= SET (C.I.P.) CAPPED 1/2" IRON ROD, CAP STAMPED PLS 4529
EPC	= ENVIRONMENTAL PROTECTION COMMISSION
W/C	= WITNESS CORNER
SEC.	= SECTION
*50.00	= TIE TO EPC LINE (REFERENCE LINE)
P.K.	= PARKER KAELOH
LB	= Licensed Business



PLAT IS ON GRID



(IN FEET)
1 INCH = 100'



PLAT NOTES:

- 1) Subdivision plat by no means represents a determination on whether properties will or will not flood. Land within the boundaries of this plat may or may not be subject to flooding; the Development Service Division has information regarding flooding and the restrictions on development.
- 2) "NOTICE: This plat, as recorded in its graphic form, is the official depiction of the subdivision lands described herein and will in no circumstances be supplanted in authority by any other graphic or digital form of the plat. There may be additional restrictions that are not recorded on this plat that may be found in the public records of this county."
- 3) Basis of bearing based on the north boundary of the NW 1/4 of the SW 1/4 of SEC. 31-30-22 bearing N88°40'39"E per State Plane Coordinates (see below)
- 4) Coordinates shown hereon are in feet and are tied to the Florida State Plane Coordinate System by third order accuracy and are supplemental data only. Originating coordinates: Hillsborough Control Stations BG-U and LITHIA.
- North American Datum of 1983 (1990).
- 5) Lines beyond the plat boundary are shown for graphical purposes and are not a part of this plat.

DARRELL COPELAND SURVEYING, INC.
7910 180th STREET McALPIN, FLORIDA 32062
386-209-4343 desurveyi@aol.com