



Area Homes Specialists

Setting the trend for how Real Estate is sold in the Midwest.
www.BarnesRealty.com

**18156 Hwy 59
 Mound City, MO 64470
 (660) 442-3177**

**1711 Oregon
 Hiawatha, KS 66434
 (785) 742-4580**

**1708 Prairie View Rd, Suite B
 Platte City, MO 64079
 (816) 219-3010**

Camp Rulo Commercial Building 110 N Ash Street, Rulo, NE



For years Camp Rulo was a prime eating place and club in the area, but a few floods, one big fire, and some new casinos on the neighboring Indian Reservations brought harder times and the business closed. What remain are the last building, the grounds around, and a huge assortment of restaurant equipment that could be put back into service with a little “sweat equity”. The building’s floor is five feet above the 100 year base flood elevation, has approximately 8,300 square feet of floor space and is simply one of the best waterfront locations on the river from Omaha to Kansas City. Let your imagination run! It could be a busy restaurant, a quick shop, an extravagant home on the Missouri River with a fabulous view or a great hunting lodge with unmatched hunting for deer, turkey, and all sorts of waterfowl in the area.

Work is in Progress! There will be a new west entrance soon!

It's wide open inside and ready for your ideas!

Price: \$187,500.00	Zoning: Commercial	Taxes: 2015 taxes were \$1,517.32
Building Dimensions: 66' X 126'	School District: Falls City SD56	Square Footage: Approx. 12,660

Agent: Jamie Barnes
 (660) 851-1125 or jamie@barnesrealty.com

BROKER PARTICIPATION:

Barnes Realty Company, as listing broker, will gladly and fully cooperate with most licensed real estate brokers to obtain a sale of the property on terms satisfactory to the current owners.



Setting the trend for how Real Estate is sold in the Midwest.

This information is thought to be accurate; however it is subject to verification and no liability for error and omissions is assumed. Barnes Realty has made every effort to present accurate information on the property presented. Most of the information comes from outside sources: County/Government/Seller and human error can occur. It's the buyer's responsibility to satisfy him self with the information presented and to determine the information to be true and accurate and the property to be suited for his intended use. The listing may be withdrawn with or without approval. The seller further reserves the right to reject any and all offers.

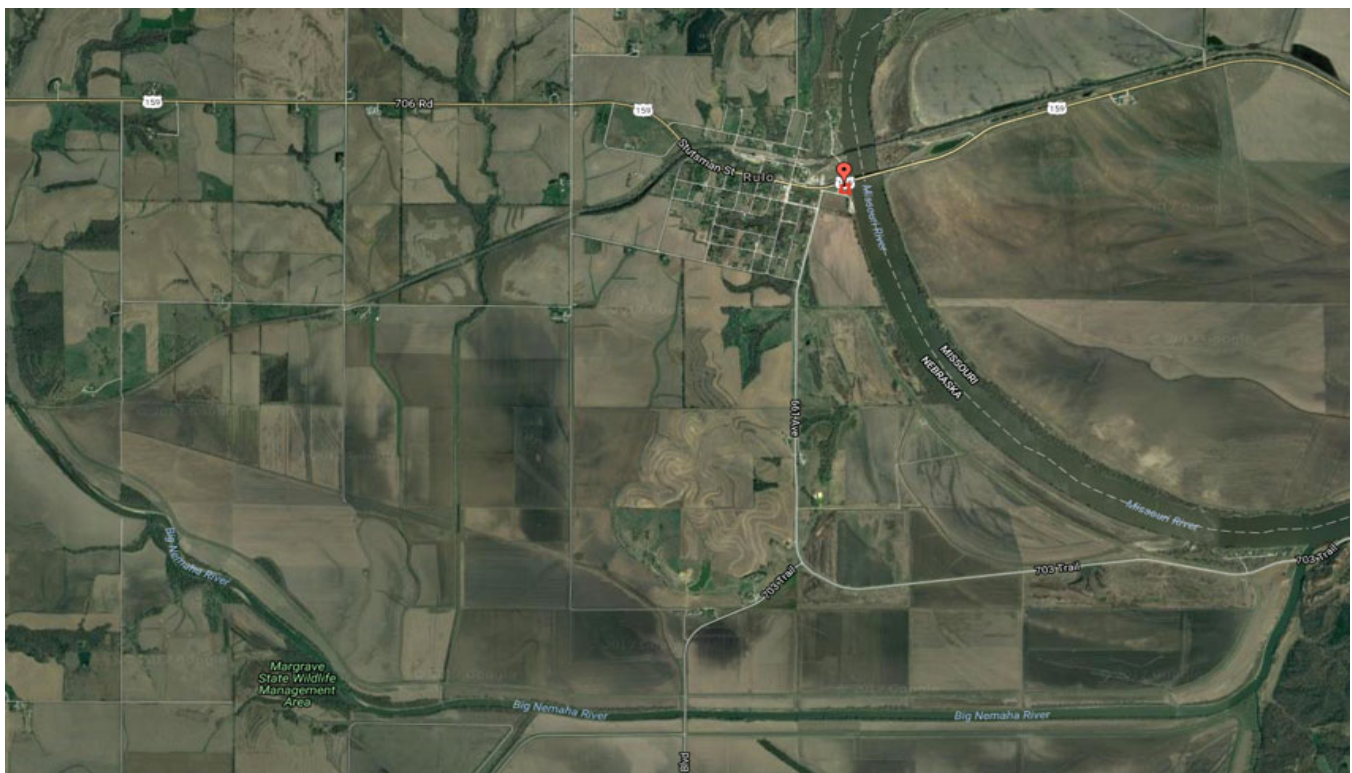
All inquiries, inspections, appointments, and offers must be sent through:

Rick Barnes, Broker BARNES REALTY COMPANY, 18156 HWY 59, MOUND CITY, MO 64470 PHONE NUMBER: 1-660-442-3177

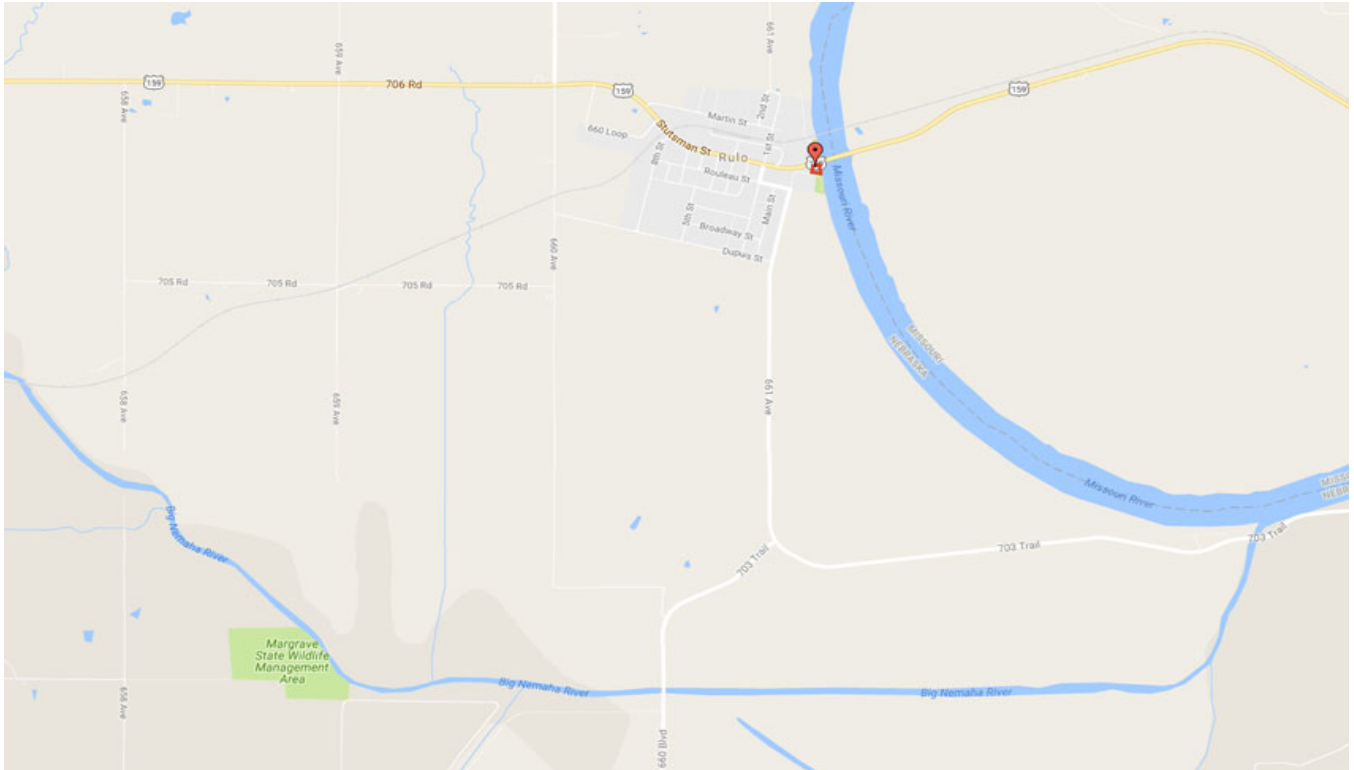
***Camp Rulo Commercial Building
110 N Ash Street, Rulo, Richardson County NE
Google Aerial***



General Location



***Camp Rulo Commercial Building
110 N Ash Street, Rulo, Richardson County NE
Driving Map***



Aerial Photos



***Camp Rulo Commercial Building
110 N Ash Street, Rulo, Richardson County NE***



***Camp Rulo Commercial Building
110 N Ash Street, Rulo, Richardson County NE***



***Camp Rulo Commercial Building
110 N Ash Street, Rulo, Richardson County NE***



Camp Rulo Commercial Building
110 N Ash Street, Rulo, Richardson County NE

