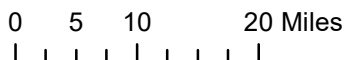
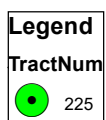


Copper Hill Tract Webster County GA Parcel D07 024 LL 27-28, LD 18



www.matreforestry.com
Albany, Georgia
229-639-4973

Mapped by Mike Matre in ArcGIS.
Disclaimer: Map information is not
guaranteed.

1 inch equals 15.78 miles
1 in = 83,333 ft
1:1,000,000

Date: 1/13/2017

MFC Tract	Strata	Label	GIS Acres (gross) +/-	% of Area
225	1	2007UNHP	145.6	72.6%
225	2	1950UNHP	5.6	2.8%
225	3	2007 & 1950BNH	47.9	23.9%
225	4	Open	0.8	0.4%
225	5	Power R/W	0.7	0.3%
Total +/-:			200.6	100.0%

Key: 4 Digit number is establishment year +/-

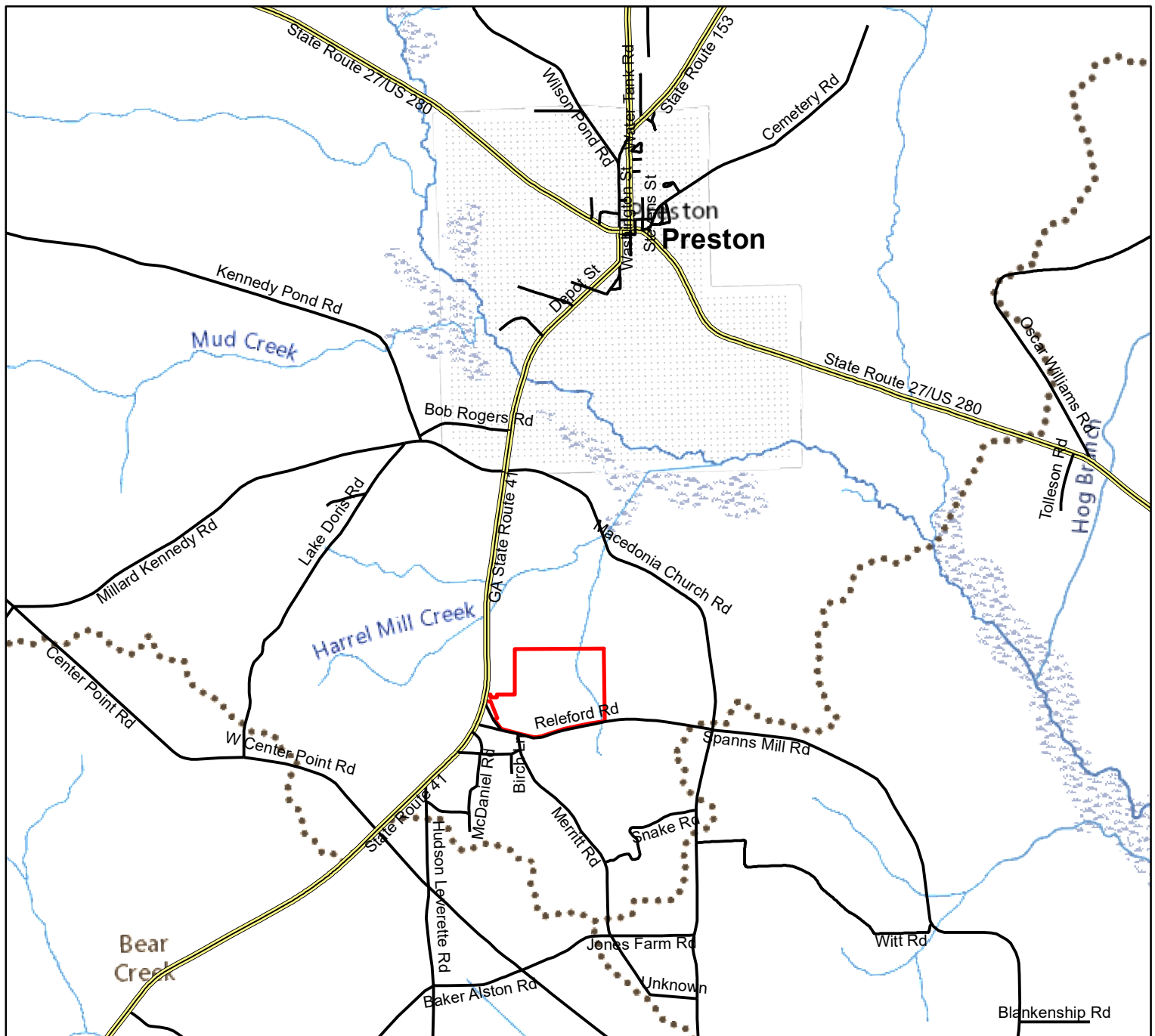
U = Upland; N = Natural; H = Hardwood; P = Pine

GIS Acres (gross) +/- = Geographic Information System mapping.

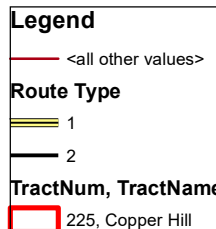
The stand acres are gross acres, meaning that woods road

Gross means that acreage in woods roads and small openings

were not deducted from stand acres.



Copper Hill Tract Webster County GA Parcel D07 024 LL 27-28, LD 18



MFC Tract	Strata	Label	GIS Acres (gross) +/-	% of Area
225	1	2007UNHP	145.6	72.6%
225	2	1950UNHP	5.6	2.8%
225	3	2007 & 1950BNH	47.9	23.9%
225	4	Open	0.8	0.4%
225	5	Power R/W	0.7	0.3%
Total +/-:			200.6	100.0%

Key: 4 Digit number is establishment year +/-

U = Upland; N = Natural; H = Hardwood; P = Pine

GIS Acres (gross) +/- = Geographic Information System mapping.

The stand acres are gross acres, meaning that woods road

Gross means that acreage in woods roads and small openings

were not deducted from stand acres.



www.matreforestry.com
Albany, Georgia
229-639-4973

Mapped by Mike Matre in ArcGIS.
Disclaimer: Map information is not
guaranteed.

1 inch equals 0.91 miles
1 in = 4,803 ft
1:57,630

Date: 1/13/2017



Copper Hill Tract Webster County GA Parcel D07 024 LL 27-28, LD 18

Legend	
TractNum, TractName	
225, Copper Hill	
Lines	
TractNum, Descrip	
225, Creek Perennial	
225, Creek Intermittent	
225, Road Trail	
225, Road Woods	
TractNum, Stratum	
225, Stands	
TractNum, Descrip	
225, NonTimber	

MFC Tract	Strata	Label	GIS Acres (gross) +/-	% of Area
225	1	2007UNHP	145.6	72.6%
225	2	1950UNHP	5.6	2.8%
225	3	2007 & 1950BNH	47.9	23.9%
225	4	Open	0.8	0.4%
225	5	Power R/W	0.7	0.3%
Total +/-:			200.6	100.0%

Key: 4 Digit number is establishment year +/-
 U = Upland; N = Natural; H = Hardwood; P = Pine
 GIS Acres (gross) +/- = Geographic Information System mapping.
 The stand acres are gross acres, meaning that woods road
 Gross means that acreage in woods roads and small openings
 were not deducted from stand acres.

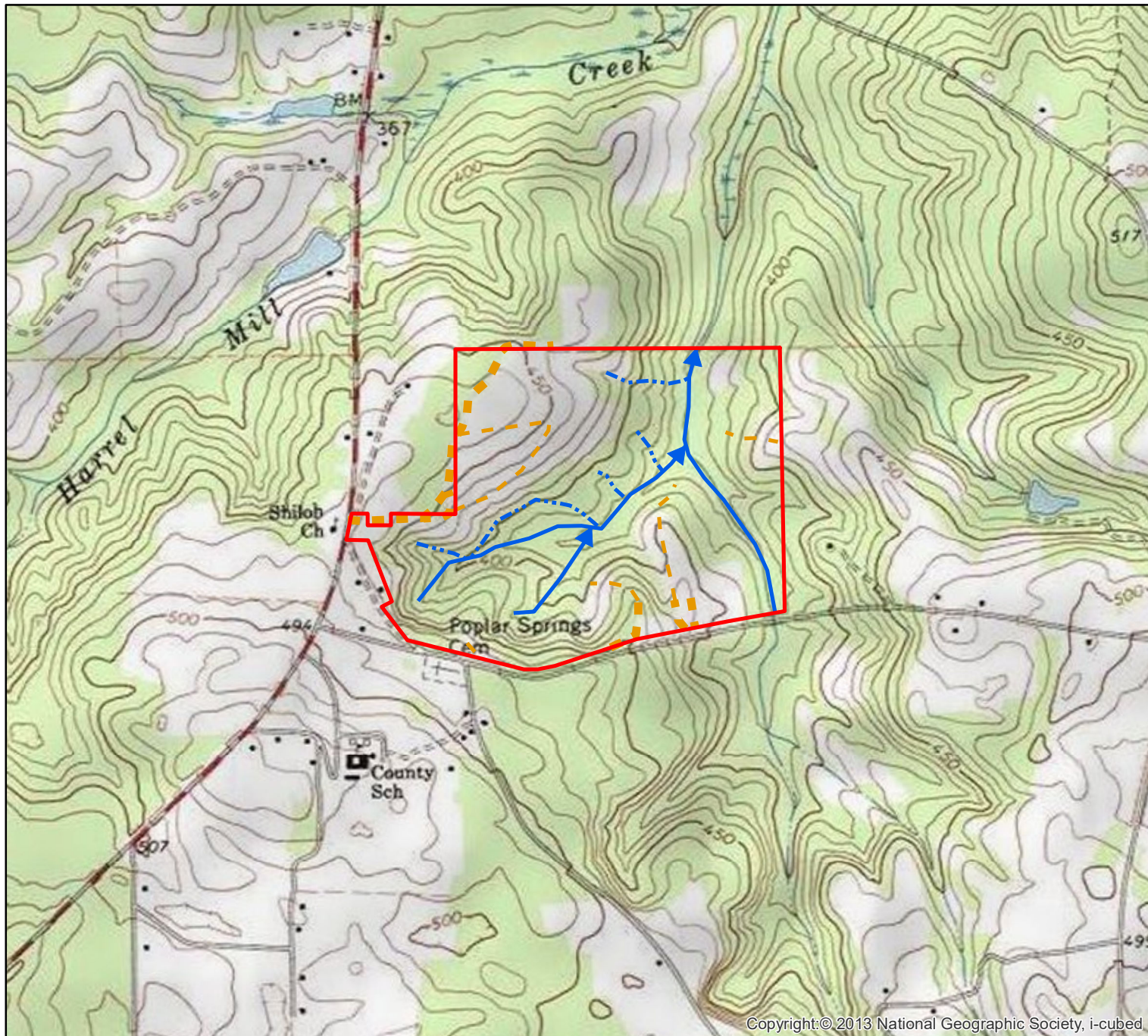


www.matreforestry.com
 Albany, Georgia
 229-639-4973

Mapped by Mike Matre in ArcGIS.
 Disclaimer: Map information is not
 guaranteed.

1 inch equals 0.13 miles
 1 in = 660 ft
 1:7,920

Date: 1/13/2017



Copyright:© 2013 National Geographic Society, i-cubed

Copper Hill Tract Webster County GA Parcel D07 024 LL 27-28, LD 18

Legend	
TractNum, TractName	
225, Copper Hill	
Lines	
TractNum, Descrip	
225, Creek Perennial	
225, Creek Intermittent	
225, Road Trail	
225, Road Woods	

MFC Tract	Strata	Label	GIS Acres (gross) +/-	% of Area
225	1	2007UNHP	145.6	72.6%
225	2	1950UNHP	5.6	2.8%
225	3	2007 & 1950BNH	47.9	23.9%
225	4	Open	0.8	0.4%
225	5	Power R/W	0.7	0.3%
Total +/-:			200.6	100.0%

Key: 4 Digit number is establishment year +/-
U = Upland; N = Natural; H = Hardwood; P = Pine
GIS Acres (gross) +/- = Geographic Information System mapping.
The stand acres are gross acres, meaning that woods road
Gross means that acreage in woods roads and small openings
were not deducted from stand acres.

0 330 660 1,320 Feet



www.matreforestry.com
Albany, Georgia
229-639-4973

Mapped by Mike Matre in ArcGIS.
Disclaimer: Map information is not
guaranteed.

1 inch equals 0.25 miles
1 in = 1,320 ft
1:15,840

Date: 1/13/2017

Soil Map—Webster County, Georgia



Natural Resources
Conservation Service

Web Soil Survey
National Cooperative Soil Survey

1/13/2017
Page 1 of 3

Map Unit Legend

Webster County, Georgia (GA307)			
Map Unit Symbol	Map Unit Name	Acres in AOI	Percent of AOI
KBA	Kinston and Bibb soils, 0 to 1 percent slopes, frequently flooded	41.9	20.8%
LmB	Lucy loamy sand, 0 to 5 percent slopes	12.2	6.0%
NcF	Nankin-Cowarts complex, 15 to 35 percent slopes	0.8	0.4%
TrB	Troup loamy sand, 0 to 5 percent slopes	69.5	34.5%
TrD	Troup loamy sand, 5 to 15 percent slopes	77.0	38.2%
Totals for Area of Interest		201.4	100.0%

