



LA - Richland Manuel 98 acres

+/-  
100.36 acres  
\$250,000

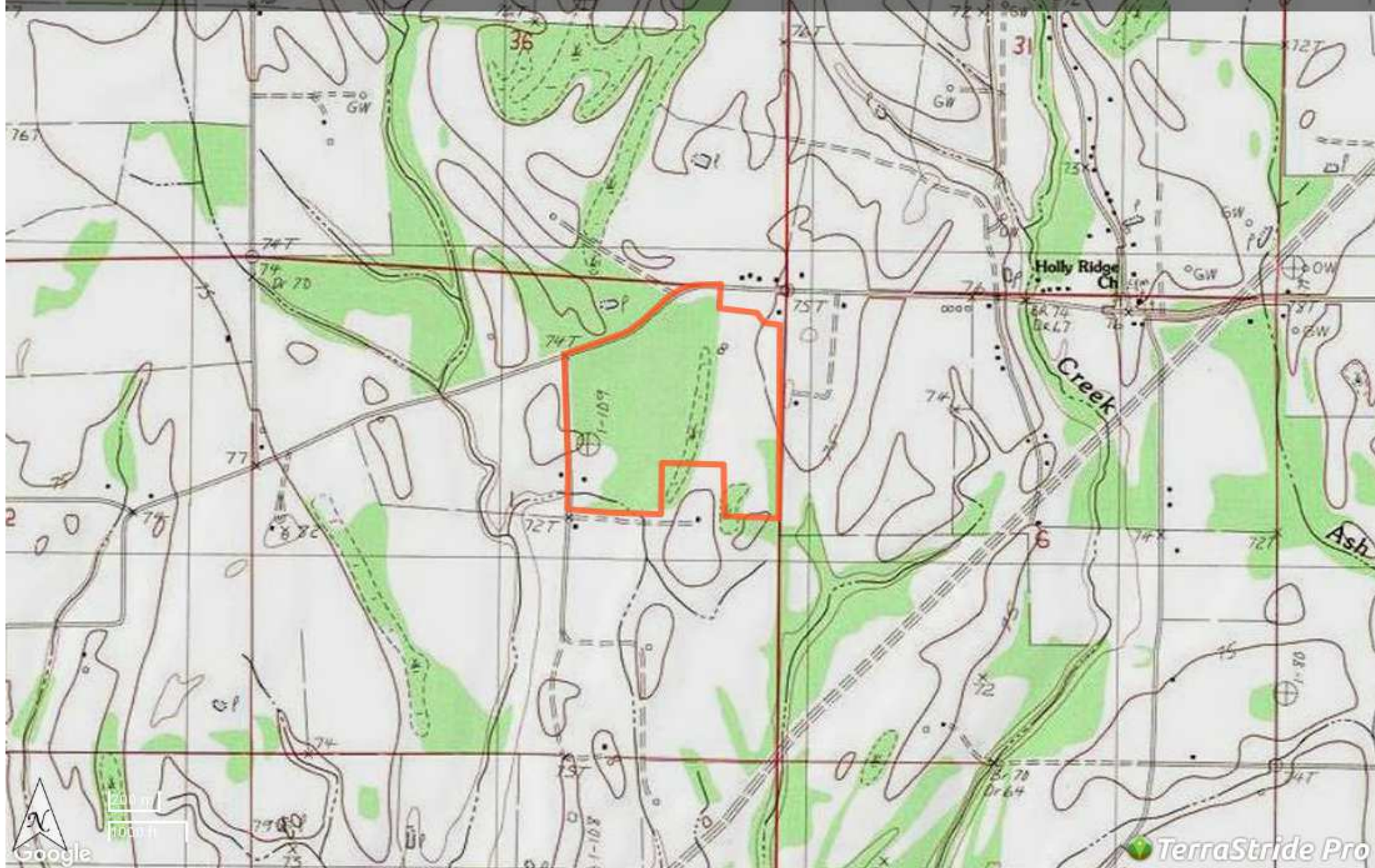
Brown Realty Co

Brad Brown

(318) 680-7809

bbrown@brownrealtyco.com

<http://www.brownrealtyco.com/>



# Property Report—LA - Richland Manuel 98 acres +/-

## Legend

Feature	Icon	Colors
Boundary		

## Description

This is a nice hunting combo. There is 20 acres of precision leveled land that is rented for \$140 per acre. The balance of the land is cutover timber that would offer some good hunting. This property has almost 1/2 mile of frontage off of Hwy 584 and has 1/2 mile of road frontage off of Charles Ware Rd. This would also make a nice home place with some income to boot. Brown Realty Co Jerry Brown, Broker 2189 hwy 425 Rayville LA 71269 318-728-9544

DISCLAIMER: The information contained herein is as obtained by this broker from sellers, owners, or other sources. This information is considered reliable, neither this broker nor owners make any guarantee, warranty or representation as to correctness of any data or descriptions and the accuracy of such statements. The correctness and / or accuracy of any and all statements should be determined through independent investigation made by the prospective purchaser. Any offer for sale is subject to prior sale, errors and omissions, change of price, terms or other conditions or withdrawal from sale

Generated on: Dec. 16, 2016