

LAND FOR SALE

Paschetta Pivots

~Lincoln County, NE~



Location:

1 mile north of NE #23 on Nelson Road, just off the west side of US #83, approximately 19 miles south of North Platte or 7 miles north of Wellfleet, Nebraska.

Legal

Description:

Two surveyed tracts in S1/2 Section 7 and S1/2 Section 8-T10N-R30W of the 6th P.M., Lincoln County, NE.

Acres & Taxes:

366.7 tax assessed acres; 2015 tax payable in 2016 - \$16,293; Occupation Tax - \$3,367

Land Use:

336.7 acres pivot irrigated by two wells/pivots, 30 acres range corners.

FSA Info:

359.0 acres cropland; Bases: Corn 293.3 acres at 126 Bu; Soybeans 42.6 acres at 45 Bu.

Water:

Two irrigation wells: G-033108 (west), G-029832 (east)
Respective pumping levels 204 and 220 foot at 1100 and 1500 gpm. Middle Republican NRD certified acres: 170.4 (west), 165.5 (east).

Soils:

Primarily Valentine sand, 20% Dundy-Hersh soils.

Improvements & Equipment:

West: 10 tower Zimmatic, drops with 150 HP High Thrust electric motor;
East: 9 tower Zimmatic (new in 2012), drops with 150 HP US Electric motor.

Price:

Price Reduced to \$1,490,000

Comments:

Great access to two center pivots with excellent water factors.
Very good terrain and productivity on 335.9 Certified Irrigated Acres.

Contact:

Mike Polk; Co-Listing Agent

308-539-4446 or mike@agriaffiliates.com

John Childears; Co-Listing Agent

308-539-4450 or john@agriaffiliates.com

Bruce Dodson, Jerry Weaver, Chase Dodson,
Don Walker, Tony Eggleston,

Agri Affiliates—Providing Farm, Ranch Real Estate Services

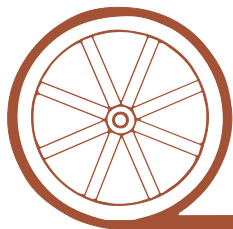
Offered Exclusively By:



Mike Polk,
Co-Listing Agent



John Childears,
Co-Listing Agent



AGRI AFFILIATES, INC.

...Providing Farm - Ranch Real Estate Services...

NORTH PLATTE OFFICE

P.O. Box 1166

I-80 & US Hwy 83

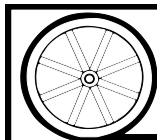
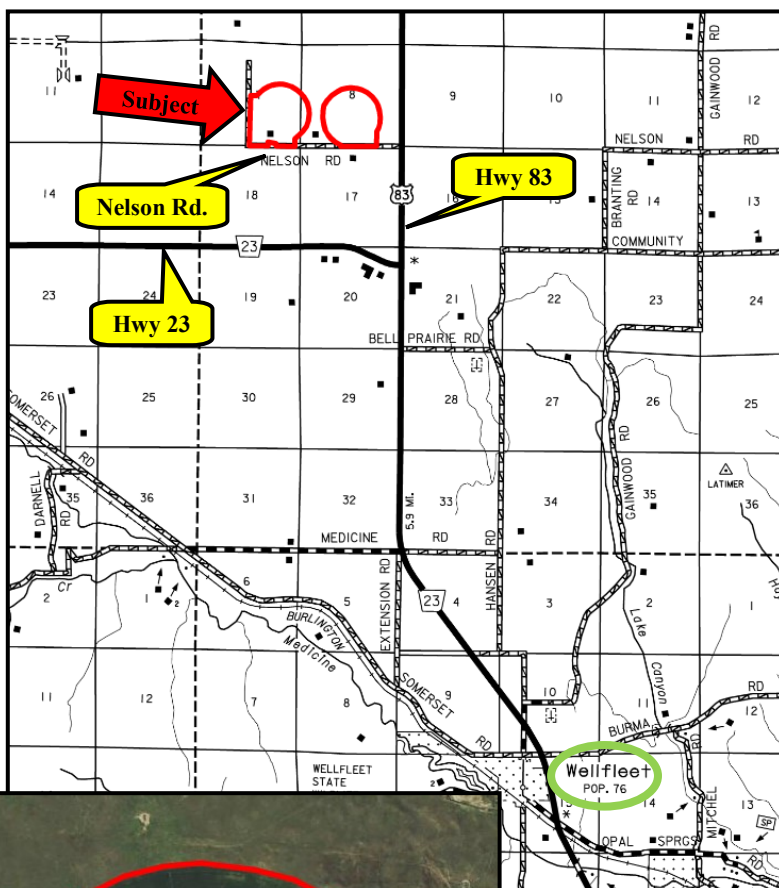
North Platte, NE 69103

www.agriaffiliates.com

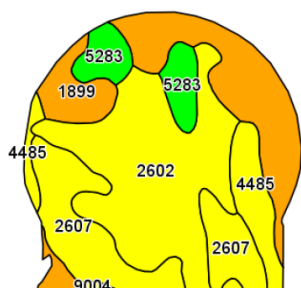
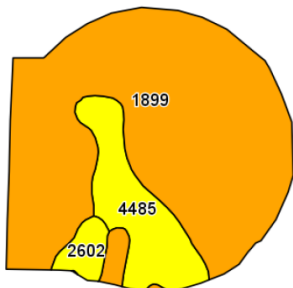
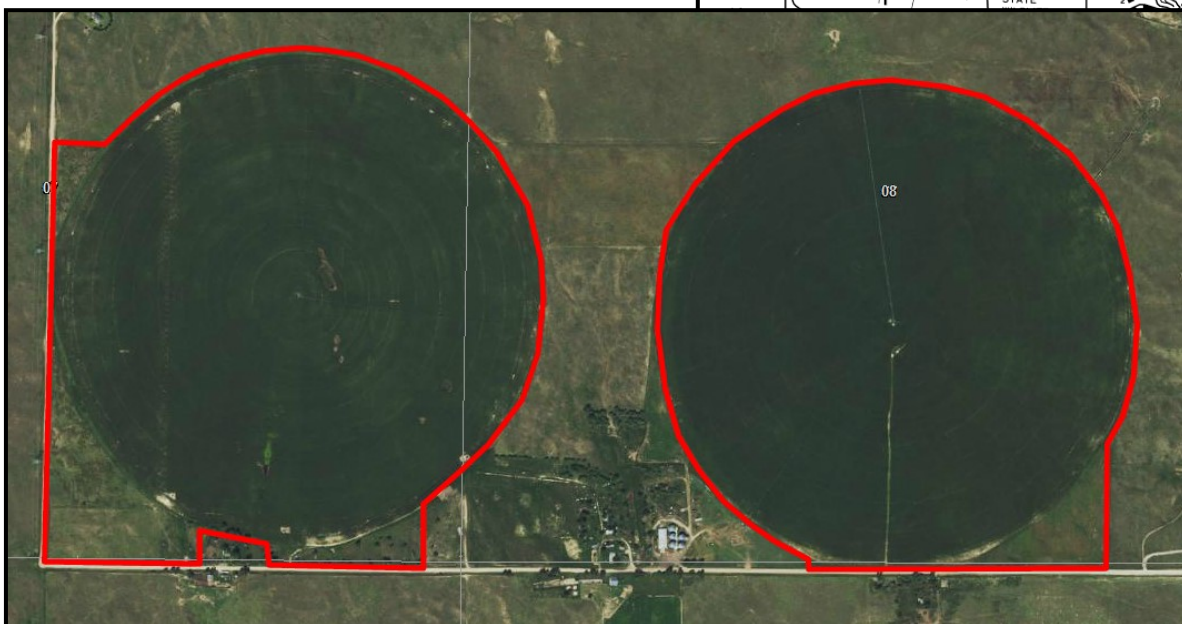
(308) 534-9240

Information contained herein was obtained from sources deemed reliable. We have no reason to doubt the accuracy, but the information is not guaranteed. Prospective Buyers should verify all information. All maps provided by Agri Affiliates, Inc. are approximations only, to be used as a general guideline, and not intended as survey accurate. As with any agricultural land, this property may include noxious weeds. Agri Affiliates, Inc. and all agents are acting as Agent of the Seller.





AGRI AFFILIATES, INC.
...Providing Farm - Ranch Real Estate Services...



Code	Soil Description	Acres	Percent of field	Non-Irr Class Legend	Non-Irr Class *c	Irr Class *c
1899	Valent sand, rolling	193.07	53.8%		VIe	IVe
2602	Hersh soils, 6 to 11 percent slopes	71.16	19.8%		IVe	IVe
4485	Dunday loamy fine sand, 0 to 3 percent slopes	44.51	12.4%		IVe	IIIe
2607	Hersh-Valentine loamy fine sands, 0 to 6 percent slopes	36.04	10.0%		IVe	IVe
5283	Vetal fine sandy loam, loamy substratum, 0 to 3 percent slopes	13.49	3.8%		IIe	IIe
9004	Anselmo fine sandy loam, 3 to 6 percent slopes	0.76	0.2%		IIIe	IIIe