

-FOR SALE-

Cropland & Grassland in CHEYENNE COUNTY, KS

SW/4 & S/2 of NW/4 of 9-2-38, Cheyenne Co., Ks

Approx. 240 acres

Asking Price \$375,600

193.82 ac. Cropland

46.67 ac. Grassland

Seller's Mineral Interest Transfer to Purchaser

2015 Taxes \$844.96

Another Great Listing Offered by:



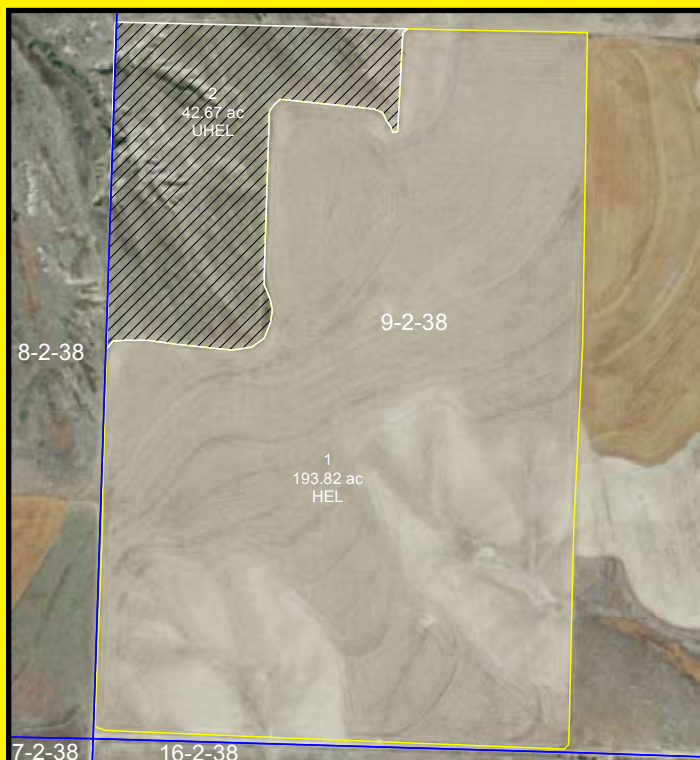
Auction & Real Estate, LLC

Consider this investment North of Bird City, Kansas and just south of the Kansas/Nebraska State Line with cropland and grassland hosting hunting opportunities! Call today!

Directions to the Property:

From HWY 36 West of Bird City:
take Road 25 North 9 miles to the
end of the Road which meets the
property.

From HWY 161 North of Bird City:
take Road X West for 2 miles, go
South 1 mile, and then West one-
half mile to the property.



Auction & Real Estate, LLC

d/b/a in NE as Auction & Real Estate by Western LLC

785-332-8990

westernauctionandrealestate.com

P.O. Box 928 - St. Francis, KS 67756

Betty L. Petersen, Broker 785-332-8421

Skip Petersen, Sales Agent

& Auctioneer 785-332-8221

Robin A. Petersen, Assoc. Broker

& Auctioneer 785-332-5586

Brett Petersen, Ks. Agent

& Auctioneer 785-332-7121

Gary L. Wickwar, Ks. Agent 785-728-7049

"From Concept to Completion!"

Licensed in Kansas, Colorado & Nebraska

Information provided, while not guaranteed, is believed to be from reliable sources. FSA information obtained from the Cheyenne County FSA office.