A photograph of a forest in autumn. The ground is covered in fallen orange and yellow leaves. A stream flows through the foreground, reflecting the surrounding trees. In the background, a wooden swing set is visible among the trees. The text "Cottage living in the country surrounded by a stream, bounded by wildflowers and huge trees." is overlaid on the left side of the image.

Cottage living in the country
surrounded by a stream, bounded
by wildflowers and huge trees.

15 Acres in Harpersville, Shelby County \$270,000

Spence Maynor Spence@CyprusPartners.com 205-500-0437

[#358 Cyprus Partners](#)

Beth M. Young Beth@CypursPartners.com 205-533-1513



Follow the winding country road (Co Rd 450) along pastures and rolling hills to Creekside Drive, curving through large pines and leading to the hillside where the cottage looks over the creek. This is a place that has a collection of native plants that is astounding for a small property; it is what Shelby County was once like. The property was chosen for the lovely tree canopy and perennial stream that wanders through the hardwood bottom. The surprise is the abundance of wildflowers on the property.

The cottage is simple and clean - freshly painted with a gazebo and deck to enjoy the birds and the breezes. It is a 1,100 sq. feet, story and a half, built in 1993 with lots of gardening space outside.





Start you day with the peace of being surrounded by huge trees overlooking the creek. Piliated woodpeckers, wildturkeys, blue herons and bard owls are just a few of the bird species that you can see or hear from the deck.



The deck spans two levels, with the gazebo connected at the end. There is also a brick patio for outdoor fires and as well as storage shed. The cottage uses city water but there is also a well nearby. The property comes with a storm shelter.





The cozy kitchen and living room are filled with light and views to the outside. The fire place is gas. the cottage has heat and air, gas stove, refriderator and microwave. Whole house has been freshly painted; attractive tile floors are also practical for country living.





Two bedrooms or office are downstairs as well as a loft with skylights to watch the stars at night. Downstairs bath has a beautiful claw foot tub and shower with a half bath upstairs.



The woods and the stream are the reason to be here - they are truly unique. More than 55 species of trees have been identified in the oak/pine forest with hardwood bottom, which supports deer, wild turkey, squirrels, racoons and other wildlife.



Native oaks, hickories, southern beech and pine dominate the half century old forest.



Towering beech trees are scattered through out the rich moist bottom land. It is one of the most diverse plant communities in the southeast.



Stream is spring fed and flowing in the middle of a drought when many other wetlands have dried up. The surprise about this stream are the wildflowers - tall and rambling wild azaleas, bottle brush buckeye, golden club, wild iris, woods spider lilies, rubecia, swamp sunflower, beauty berry, turkscap lilies, iron weed, milkweed, red cardinal flower - and those are the ones I could see in the fall. The spring is the best of Shelby County wildflowers. Among them are trillium, jack in the pulpit, may-apple, wild phlox, coreopsis, wild geraniums, christmas ferns, lady ferns, royal ferns, birdsfoot violet, blue eyed grass, wild ginger and indian pink.



Dominant species, like shagbark hickory stand out in the forest. Muscadines, paw paws and blue berries are some of the wild fruit bearing plants you find in a short walk through the woods.



The trails and benches in this cherished place are managed and built with a lot of love. The large barn, with lean-to shed for equipment storage, also has a screened porch on the back.

Grape arbor and orchard lead to the barns. The open pole barn has a concrete floor good for equipment storage or hosting parties on the grounds.

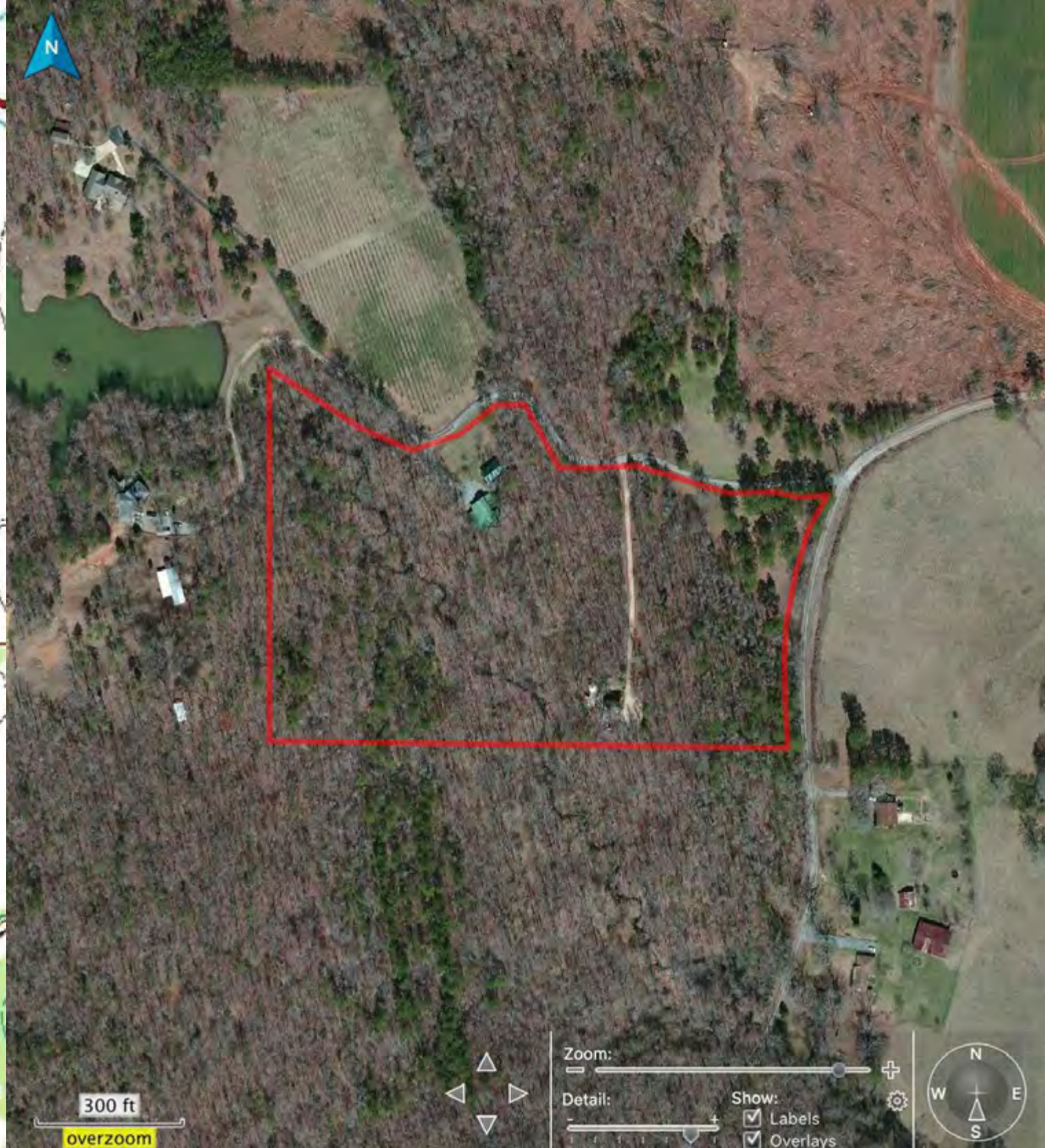
The main barn (over 3000 sq. feet with concrete floor) is divided into large work rooms, shop with water, power and walk-in coolers downstairs.




Upstairs includes a finished office and a full un-finished potential apartment with Pella windows.

The creek and trails are behind the barn and off to the right.





A rustic wooden door with a decorative geometric design in the center, set against a wooden wall. The door is made of vertical wooden planks and features a central design of interlocking wooden beams forming a diamond shape. The text "Come on in. This is a gift from one family to the next." is overlaid on the left side of the door.

Come on in. This is a gift from one family to the next.

No matter the season, the woods at Jennifer's creek have something to give. Spring, of course, gives the white, slightly pink natural azalea blooms in the understory framed by the stunning redbud along the open edges announcing that the sap is flowing once again all in the woods. The delicate colors of the yellow poplar blooms can only be seen after a strong wind has blown some to the forest floor – but they are well worth bending down to pick up and examine. The deep maroon blooms of the paw paw are easy to miss but many are just at eye level along the creek. All of this and much more is announced by the bright yellow spires of the bog torch in the flowing stream bed. Later the water crest will appear.

Summer is full of activity with as things develop and before long you stumble upon the tall white spider lily – but enjoy while you can – they don't last long.

The paw paw fruit begins to enlarge and can be seen in the dappled light filtering through the upper canopy. All manner of forest life goes about their business.



Fall brings the colors and the forest floor gets a new carpet and the creek slows down and murmurs along, the paw paws fall and quickly disappear to the coons while the squirrels gather nuts and acorns and the crows are content with tons of muscidines at their pleasure.

The bald cypress turn golden and then become bald indeed.

In winter the bones of the forest are on display and everyone gets a rest.