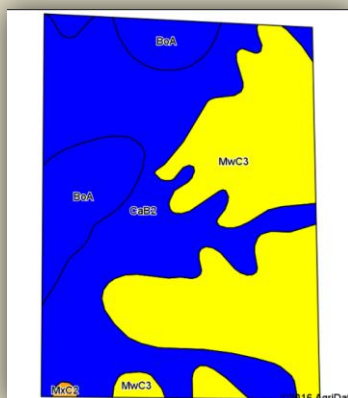
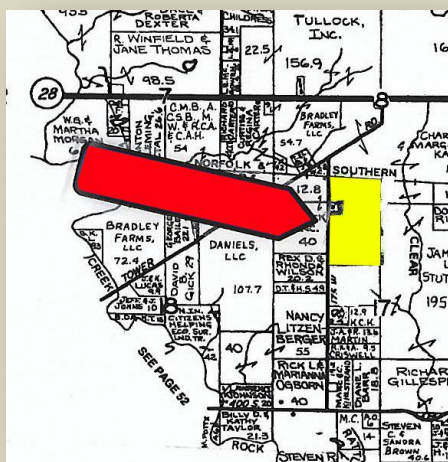


FOR SALE

50± Acres of Cropland

Washington Twp., Warren Co., Williamsport, IN

Directions: Go west on SR28 from Williamsport approximately 3 miles, then south on Tower Road. Cross the railroad track and continue approximately 1 mile. Farm is on east side of the road.



Description of Property:

Nice cropland field and good road access

Suitable for hay or row crops

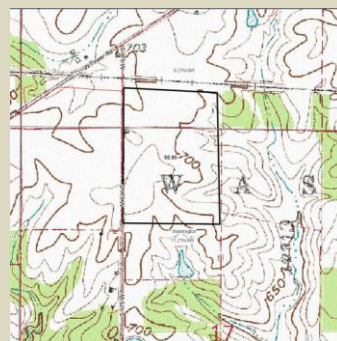
Nice homesite

Subject to tenant's rights for 2016 season

Taxes: \$800 per year

Asking Price: \$ _____

Showing by appointment only.



Area Symbol: IN171, Soil Area Version: 18											
Code	Soil Description	Acres	Percent of field	Non-Irr Class Legend	Non-Irr Class *c	Soybeans	Oats	Corn	Winter wheat	Grass legume hay	Grass legume pasture
CaB2	Cadiz silt loam, moderately wet, 1 to 6 percent slopes, eroded	23.15	45.5%		Ille	46		131	59	5	8
Mwc3	Morley silty clay loam, moderately wet, 6 to 12 percent slopes, severely eroded	20.70	40.7%		IVe	39		111	50	4	8
BoA	Blount silt loam, Lake Michigan Lobe, 0 to 2 percent slopes	6.86	13.5%		Ilw	42	59	124	51	4	6
MxC2	Morley-Cadiz silt loams, moderately wet, 6 to 12 percent slopes, eroded	0.14	0.3%		Ille	42		121	54	4	8
Weighted Average						42.6	8	121.9	54.2	4.5	6.9



Listing Agent: Michael Kay • Cell: 765-585-3098 • mike@thewarrenagency.com

The Warren Agency

PO Box 158, Williamsport, IN 47993

Office: 765-762-2359 • www.thewarrenagency.com

