

# FARM FOR SALE

JORDAN TOWNSHIP • JASPER COUNTY

527<sup>+/-</sup>  
ACRES

## LARGE CONTIGUOUS TRACT OF CROPLAND

HOME • MACHINE SHED • GRAIN BINS

 **DOWNLOAD!**  
Halderman Real Estate App



**DEAN RETHERFORD**  
LAFAYETTE, IN  
765-296-8475  
DEANR@HALDERMAN.COM

**HALDERMAN**  
REAL ESTATE  
SERVICES  
800.424.2324 | [www.halderman.com](http://www.halderman.com)

# FARM FOR SALE

JORDAN TOWNSHIP • JASPER COUNTY

527<sup>+/-</sup>  
ACRES

## CROPLAND & BUILDINGS



495<sup>+/-</sup> TILLABLE • 7.9<sup>+/-</sup> WOODED  
2<sup>+/-</sup> ACRE HOMESITE



**DEAN RETHERFORD**  
LAFAYETTE, IN  
765-296-8475  
DEANR@HALDERMAN.COM

**HALDERMAN**  
REAL ESTATE  
SERVICES  
HLS# DMR-11889 (16)  
800.424.2324 | [www.halderman.com](http://www.halderman.com)

# PROPERTY DETAILS

LOCATION: 7 MILES SOUTHWEST OF RENSSELAER, WEST OF I-65 & SR 16, NEAR THE NEWTON COUNTY LINE AT 10936 S 880 W, RENSSELAER, IN

ZONING: AGRICULTURAL

TOPOGRAPHY: LEVEL

SCHOOL DISTRICT: RENSSELAER CENTRAL SCHOOLS CORP.

ANNUAL TAXES: \$6,218

DRAINAGE ASSESSMENT: \$959

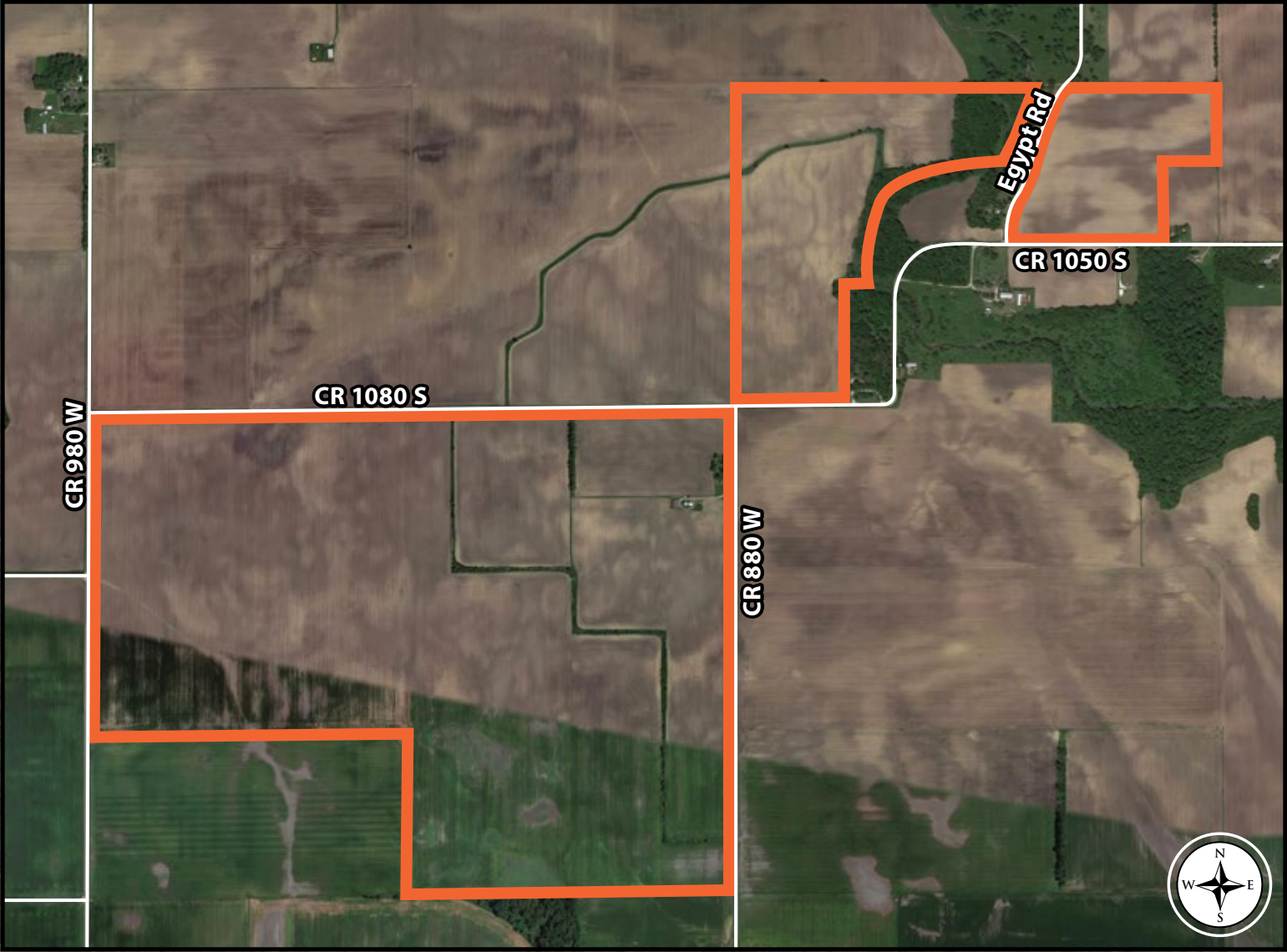


HOUSE: 2,550 SQ FT DWELLING, ONE AND A HALF STORY FRAME HOME WITH WOOD SIDING AND AN ASPHALT SHINGLE ROOF. THE HOME CONSISTS OF A BACK PORCH/UTILITY ROOM, KITCHEN, FULL BATHROOM, FAMILY ROOM, AND BEDROOM. THE UPSTAIRS OF THE HOME CONSISTS OF A LANDING AND TWO BEDROOMS. THE HOME HAS NOT BEEN OCCUPIED FOR APPROXIMATELY 10 YEARS.

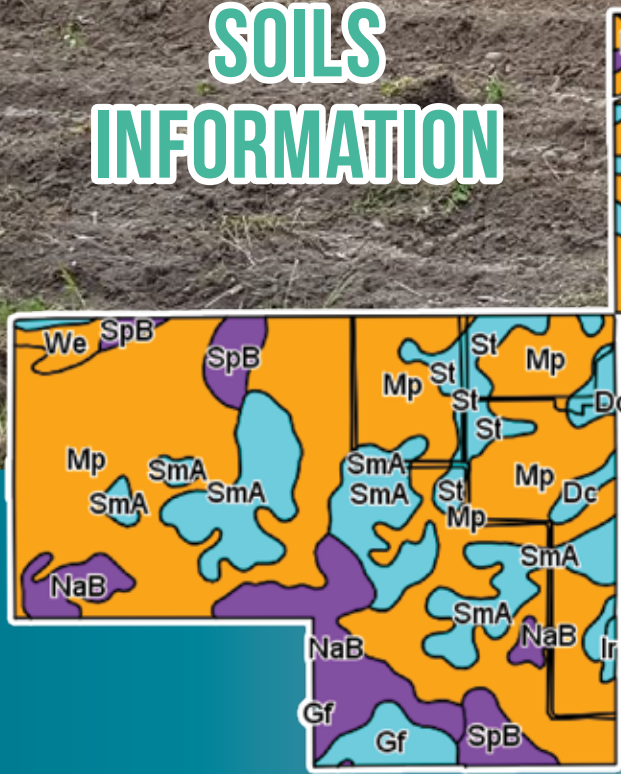
GARAGE: THE GARAGE IS 22' x 30' WITH WOOD SIDING AND AN ASPHALT SHINGLE ROOF.

GRAIN BINS: 36' x 9 RING BIN AND 30' x 9 RING BIN.

SHED: THE SHED IS 48' x 60' WITH METAL SIDING AND AN ASPHALT SHINGLE ROOF.



## SOILS INFORMATION



Code	Soil Description	Acres	Corn	Soybeans
Field borders provided by Farm Service Agency as of 5/21/2008. Soils data provided by USDA and NRCS.				
Mp	Montgomery silty clay loam	278.11	160	44
SmA	Simonin loamy sand, 0 to 2 percent slopes	74.78	131	43
NaB	Nesius fine sand, 1 to 3 percent slopes	41.28	95	30
St	Strole clay loam	30.90	136	41
SpB	Sparta sand, 2 to 6 percent slopes	16.78	82	25
Dc	Darroch loam	15.77	160	49
Re	Rensselaer loam	15.59	172	48
Gf	Gilford fine sandy loam	10.05	148	33
So	Sloan silt loam, frequently flooded, undrained	8.38		
ChB	Chelsea sand, 2 to 6 percent slopes	8.19	82	29
Wt	Whitaker fine sandy loam	6.68	141	46
We	Watseka loamy fine sand	6.51	105	27
Ir	Iroquois fine sandy loam	2.93	170	47
OaC	Oakville fine sand, 6 to 15 percent slopes	0.53	64	23
Weighted Average			142	40.9

