

Farm for Sale

Busey Farm Brokerage



Farm for Sale

Sarah Gimbel - Sherr Farm

44.55 Acres

Location

This farm is located approximately 3 miles east of Macon in South Macon Township.

Legal Description

The southeast 1/4 of the southeast 1/4 of Section 36; all in Township 15 North, Range 2 East of the Third Principal Meridian (3PM), Macon County, Illinois.

Listing Price

44.55 acres x \$11,300/acre = \$ 503,415.00

Lease/Possession

The farm is currently leased for the 2016 crop year on a 50/50 basis. The seller will retain all rights to the 2016 crop.

Contact Information



Dean Kyburz, Managing Broker 217-425-8290
Corey Zelhart, Listing Broker 217-425-4245
Tom Courson, Broker 217-425-8291
Kyle Ogden, Broker 217-425-8279
Nick Suess, Broker 217-425-8296

busey.com

259 E. South Park—Decatur, IL 62523
Phone: 217-425-8340—Fax 217-362-2724

County FSA Data

Farm #	7398	Tract #	7674
--------	------	---------	------

Total Acres:	44.55	Cropland Acres:	44.55
--------------	-------	-----------------	-------

Corn Base Acres:	17.96	Soybean Base Acres:	17.48
------------------	-------	---------------------	-------

Farm Program: ARC-County

Price Loss Coverage (PLC) Yields

Corn Yield:	165	Soybean Yield:	NA
-------------	-----	----------------	----

Real Estate Tax Information

Parcel ID #	Acres	2015 Assessed	2015 Taxes Payable 2016
16-16-36-400-001	Part of 122.18	54,848	\$1,597.34 *Estimated Prorated Share

Soil Test Results

Spring 2013 Soil Test

pH: 6.4	P1: 89	K: 417
---------	--------	--------

Disclaimer: The information contained in this brochure is considered accurate. It is subject to verification and no liability for errors or omissions is assumed. There are no warranties, expressed or implied, as to the information herein contained, and it is recommended that an independent inspection of the property be made by all buyers.

Agency: Busey Farm Brokerage, a division of Busey Bank, its agents and representatives, are agents of the Seller

Plat Map



Busey FARM
BROKERAGE

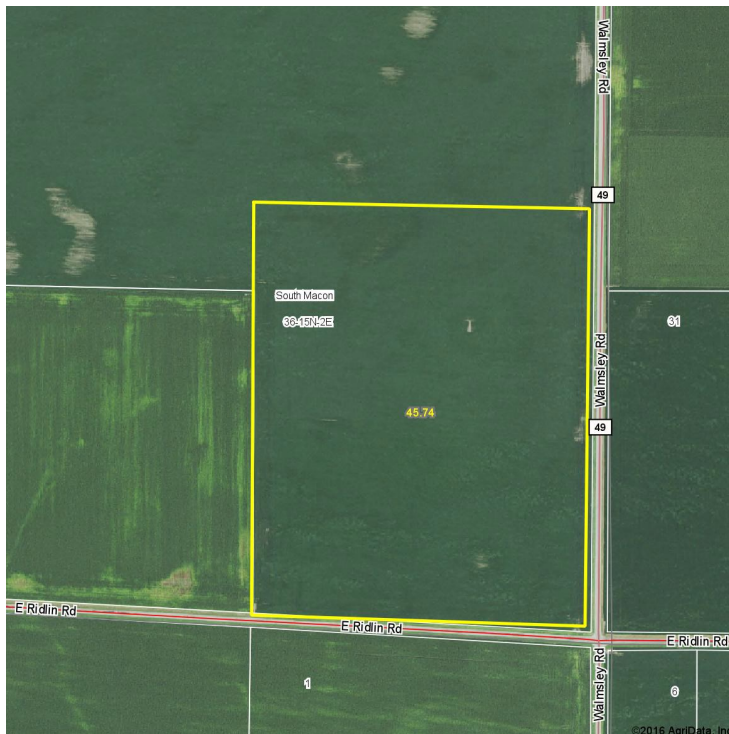
Dean Kyburz, Managing Broker
Corey Zelhart, Listing Broker
Tom Courson, Broker
Kyle Ogden, Broker
Nick Suess, Broker

Phone 217-425-8290
Phone 217-425-8245
Phone 217-425-8291
Phone 217-425-8279
Phone 217-425-8296

Agency: Busey Farm Brokerage, a division of Busey Bank, its agents and representatives, are agents of the Seller.

Farm for Sale

Aerial Map and Soil Information



Soil Code	Soil Description	Acres	Percent Tillable	Corn Bu/A	Soybean Bu/A	Crop Productivity Index for optimum management
722A	Drummer Milford Silty Clay Loam	19.88	44.2%	184.0	60.0	137.0
67A	Harpster Silty Clay Loam	9.73	21.6%	182.0	57.0	133.0
154A	Flanagan Silt Loam	8.48	18.9%	194.0	63.0	144.0
198A	Elburn Silt Loam	6.46	15.3%	197.0	61.0	143.0
Weighted Average		44.55		187.4	60.1	138.4



Licensed Real Estate Broker Corporation

Dean Kyburz, Managing Broker
Corey Zelhart, Listing Broker
Tom Courson, Broker
Kyle Ogden, Broker
Nick Suess, Broker

Phone 217-425-8290
Phone 217-425-8245
Phone 217-425-8291
Phone 217-425-8279
Phone 217-425-8296

Disclaimer: The information contained in this brochure is considered accurate. It is subject to verification and no liability for errors or omissions is assumed. There are no warranties, expressed or implied, as to the information herein contained, and it is recommended that an independent inspection of the property be made by all buyers.

Agency: Busey Farm Brokerage, a division of Busey Bank, its agents and representatives, are agents of the Seller