

Lakeshore Dr. & Eagle Dr. - 0.9 Acs

Texas, AC +/-



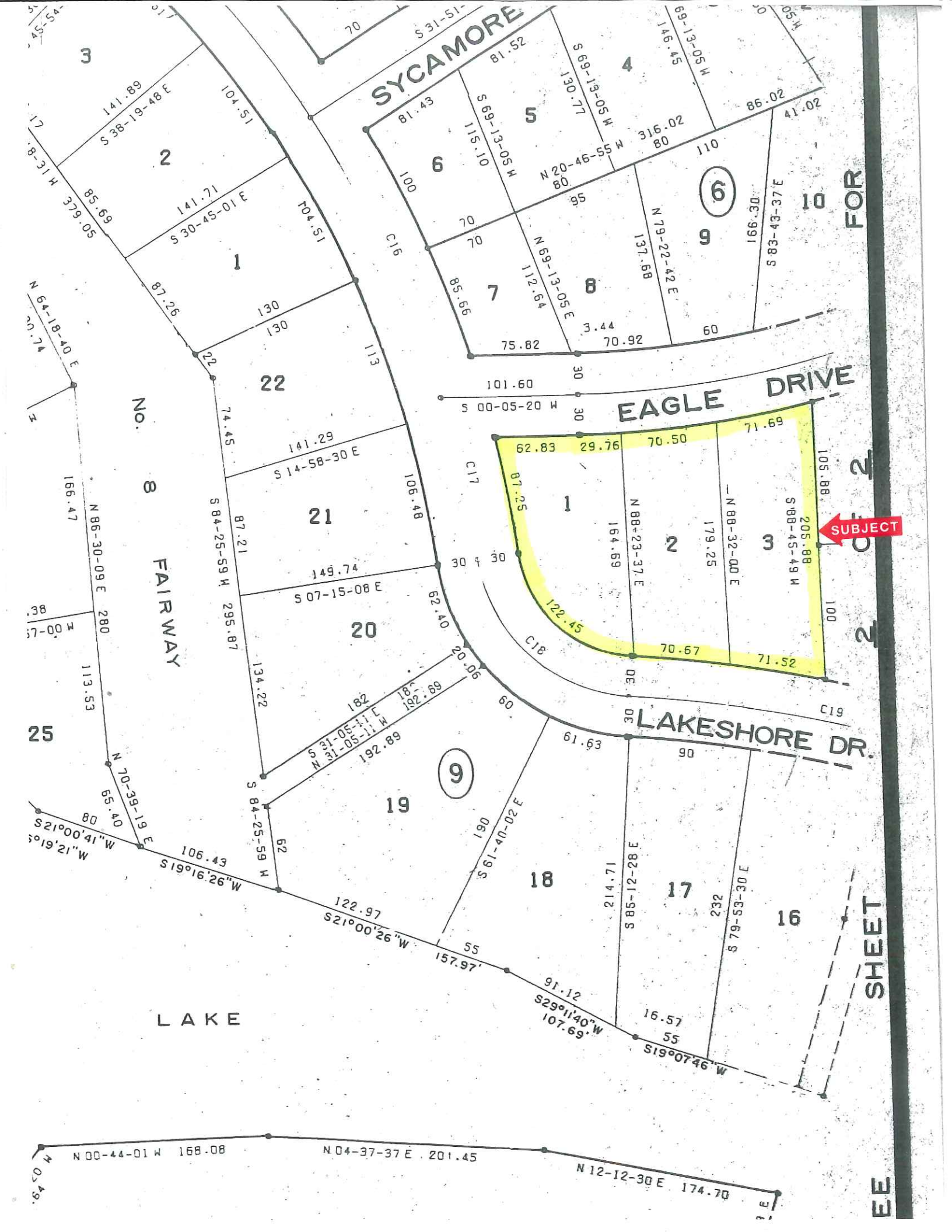
 Boundary

Lakeshore Dr. & Eagle Dr. - 0.9 Acs

Texas, AC +/-



- Boundary
- 100 Year Floodplain
- 500 Year Floodplain



SYCAMORE

NO. 8 FAIRWAY

EAGLE DRIVE

LAKESHORE DR.

LAKE

FOR

2

SHEET

EE

SUBJECT

3
17 8-31 W 379.05
141.89 S 38-19-48 E
104.51
141.71 S 30-45-01 E
87.26
130
130
22
74.45
141.29 S 14-58-30 E
106.48
149.74 S 07-15-08 E
134.22
182
181
192.89
106.43 S 19°16'26" W
122.97 S 21°00'26" W
157.97
91.12 S 29°11'40" W 107.69
16.57 55
S 19°07'46" W

4
69-13-05 W 146.45
130.77
316.02 80
86.02 41.02
110
N 79-22-42 E 137.68
S 83-43-37 E 166.30
105.88
205.88 S 88-45-49 W
100

5
S 31-51-
81.52
S 69-13-05 W 115.10
N 20-46-55 W 80
N 69-13-05 E 112.64
85.66
75.82
3.44
70.92
60

6
100
70
70
85.66
101.60 S 00-05-20 W
30
30
62.83
29.76
70.50
71.69
87.25
164.69
179.25
105.88
205.88 S 88-45-49 W
71.52
70.67

7
100
70
70
85.66
101.60 S 00-05-20 W
30
30
62.83
29.76
70.50
71.69
87.25
164.69
179.25
105.88
205.88 S 88-45-49 W
71.52
70.67

8
N 20-46-55 W 80
N 69-13-05 E 112.64
85.66
75.82
3.44
70.92
60

9
110
N 79-22-42 E 137.68
S 83-43-37 E 166.30
105.88
205.88 S 88-45-49 W
100

10
S 83-43-37 E 166.30
105.88
205.88 S 88-45-49 W
100

19
182
181
192.89
106.43 S 19°16'26" W
122.97 S 21°00'26" W
157.97
91.12 S 29°11'40" W 107.69
16.57 55
S 19°07'46" W

20
149.74 S 07-15-08 E
134.22
182
181
192.89
106.43 S 19°16'26" W
122.97 S 21°00'26" W
157.97
91.12 S 29°11'40" W 107.69
16.57 55
S 19°07'46" W

21
149.74 S 07-15-08 E
134.22
182
181
192.89
106.43 S 19°16'26" W
122.97 S 21°00'26" W
157.97
91.12 S 29°11'40" W 107.69
16.57 55
S 19°07'46" W

22
74.45
141.29 S 14-58-30 E
106.48
149.74 S 07-15-08 E
134.22
182
181
192.89
106.43 S 19°16'26" W
122.97 S 21°00'26" W
157.97
91.12 S 29°11'40" W 107.69
16.57 55
S 19°07'46" W

25
166.47
N 86-30-09 E 280
113.53
N 70-39-19 E 65.40
80
S 21°00'41" W
S 19°21" W

3
17 8-31 W 379.05
141.89 S 38-19-48 E
104.51
141.71 S 30-45-01 E
87.26
130
130
22
74.45
141.29 S 14-58-30 E
106.48
149.74 S 07-15-08 E
134.22
182
181
192.89
106.43 S 19°16'26" W
122.97 S 21°00'26" W
157.97
91.12 S 29°11'40" W 107.69
16.57 55
S 19°07'46" W

4
69-13-05 W 146.45
130.77
316.02 80
86.02 41.02
110
N 79-22-42 E 137.68
S 83-43-37 E 166.30
105.88
205.88 S 88-45-49 W
100

5
S 31-51-
81.52
S 69-13-05 W 115.10
N 20-46-55 W 80
N 69-13-05 E 112.64
85.66
75.82
3.44
70.92
60

6
100
70
70
85.66
101.60 S 00-05-20 W
30
30
62.83
29.76
70.50
71.69
87.25
164.69
179.25
105.88
205.88 S 88-45-49 W
71.52
70.67

7
100
70
70
85.66
101.60 S 00-05-20 W
30
30
62.83
29.76
70.50
71.69
87.25
164.69
179.25
105.88
205.88 S 88-45-49 W
71.52
70.67

8
N 20-46-55 W 80
N 69-13-05 E 112.64
85.66
75.82
3.44
70.92
60

9
110
N 79-22-42 E 137.68
S 83-43-37 E 166.30
105.88
205.88 S 88-45-49 W
100

10
S 83-43-37 E 166.30
105.88
205.88 S 88-45-49 W
100

19
182
181
192.89
106.43 S 19°16'26" W
122.97 S 21°00'26" W
157.97
91.12 S 29°11'40" W 107.69
16.57 55
S 19°07'46" W

20
149.74 S 07-15-08 E
134.22
182
181
192.89
106.43 S 19°16'26" W
122.97 S 21°00'26" W
157.97
91.12 S 29°11'40" W 107.69
16.57 55
S 19°07'46" W

21
149.74 S 07-15-08 E
134.22
182
181
192.89
106.43 S 19°16'26" W
122.97 S 21°00'26" W
157.97
91.12 S 29°11'40" W 107.69
16.57 55
S 19°07'46" W

22
74.45
141.29 S 14-58-30 E
106.48
149.74 S 07-15-08 E
134.22
182
181
192.89
106.43 S 19°16'26" W
122.97 S 21°00'26" W
157.97
91.12 S 29°11'40" W 107.69
16.57 55
S 19°07'46" W

25
166.47
N 86-30-09 E 280
113.53
N 70-39-19 E 65.40
80
S 21°00'41" W
S 19°21" W

N 00-44-01 W 168.08
N 04-37-37 E 201.45
N 12-12-30 E 174.70