



IA - Richland Kiper 108 acres

+/- RT

103.42 acres

\$270,000

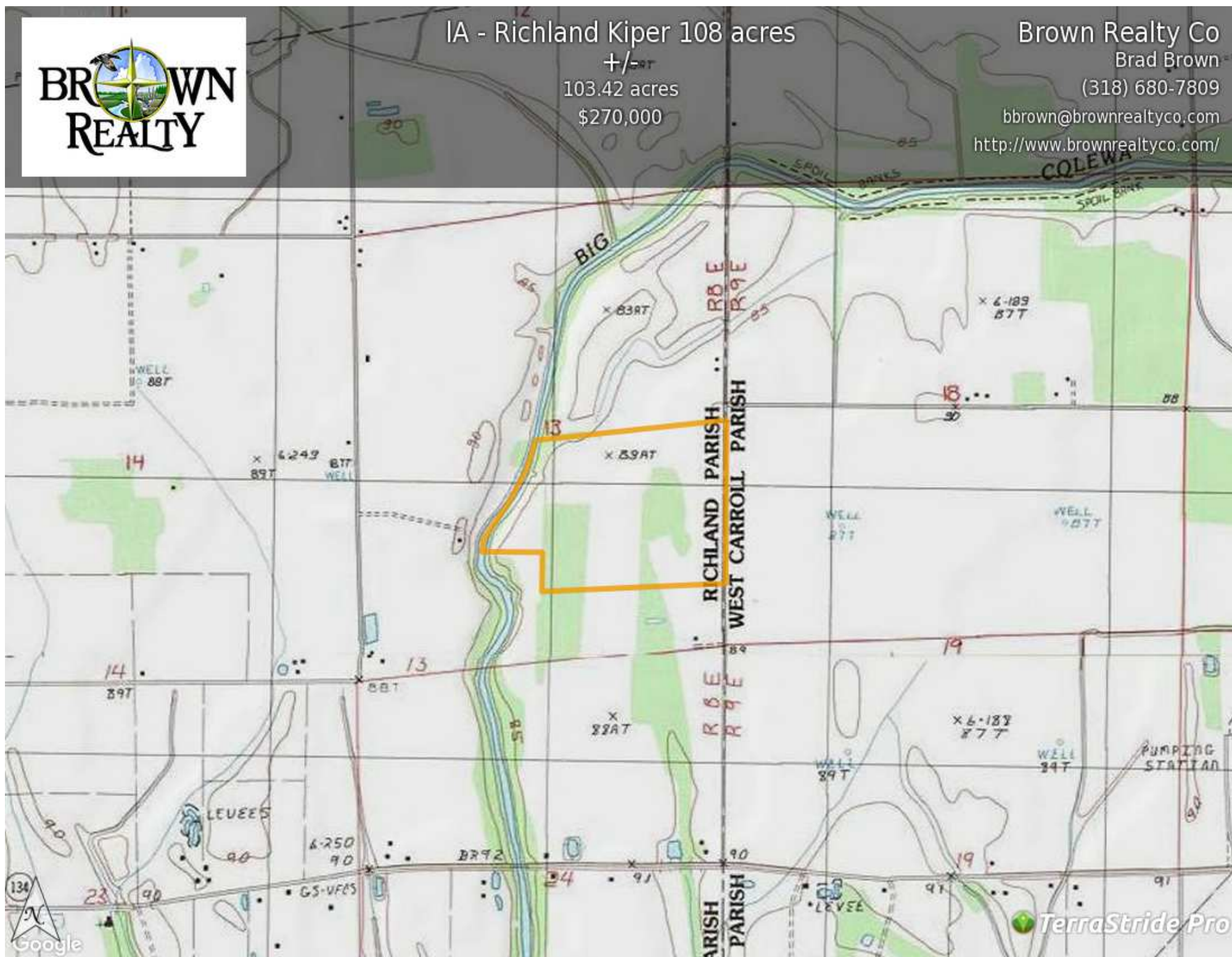
Brown Realty Co

Brad Brown

(318) 680-7809

bbrown@brownrealtyco.com

<http://www.brownrealtyco.com/>



# Property Report—IA - Richland Kiper 108 acres +/-

## Legend

Feature	Icon	Colors
Boundary		

## Description

This is a nice pine timber tract that is located off of Self Road on the Richland Parish West Carroll Parish line. This tract has road frontage for about 1/2 mile. There has been a recent timber cruise on this tract at \$114,200.00 This tract is priced to sell and would make a great timber investment. Brown Realty Co Jerry Brown, Broker 2189 Hwy 425 Rayville LA 71269 318-728-9544

DISCLAIMER: The information contained herein is as obtained by this broker from sellers, owners, or other sources. This information is considered reliable, neither this broker nor owners make any guarantee, warranty or representation as to correctness of any data or descriptions and the accuracy of such statements. The correctness and / or accuracy of any and all statements should be determined through independent investigation made by the prospective purchaser. Any offer for sale is subject to prior sale, errors and omissions, change of price, terms or other conditions or withdrawal from sale

Generated on: July 20, 2016