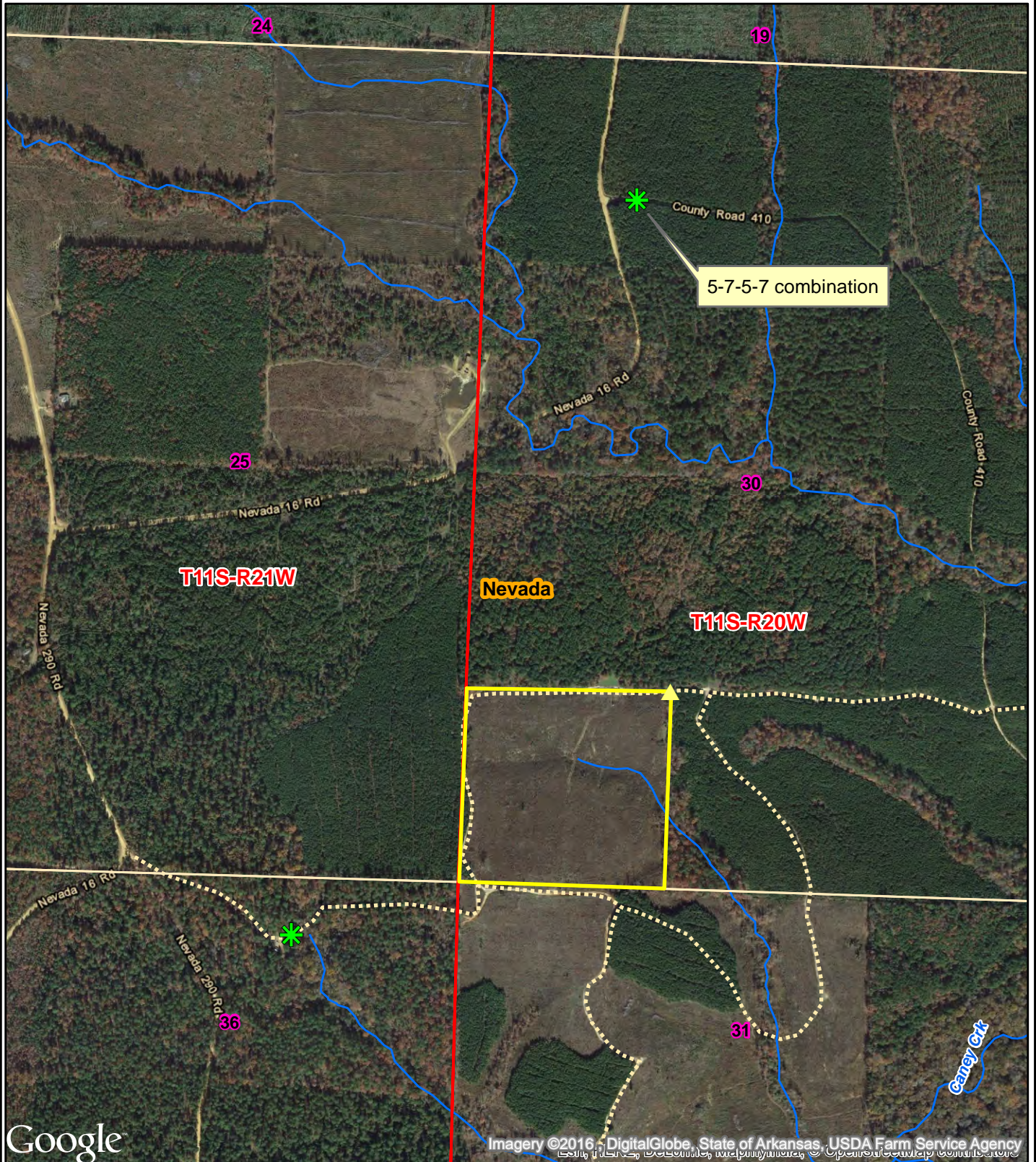


NOTICE OF LAND SALE
"Lackland Springs Tract" - Listing #4540
Frl. SW¼ of SW¼, Sec. 30, T11S, R20W, Nevada County, Arkansas
Containing 39.26 acres, more or less



0 0.125 0.25
Miles



Created: June, 2016
ESRI Aerial Photography
Drawn By: JDT