

601.381.3320

rbutler@4cornerprop.com

4cplandandhomes.com



Call Ryan TODAY!

Office: 601.340.3457

Fax: 601.952.2829

## 63+/- Acres JONES COUNTY, MS

### Premier Recreational Tract in South MS!



**-Priced to sell at \$215,000.00**

**-Tallahoma Creek Frontage!**

**-Internal Roads!**

**-Established Food Plots!**

**-Great Mix of Hardwood & Pine!**

This tract is in the most prime hunting location of Jones County. Located just minutes north of Laurel, MS and just west of hwy 15. This property features excellent internal roads throughout the property. There are already established food plots in place for harvesting trophy whitetail. The property also has frontage along the Tallahoma Creek, which provides wildlife an abundant source of food and water. Not only is it a great hunting tract but it also provides various ages of pine and hardwood timber. Property is loaded with deer, turkey, and small game. This is a turnkey hunting tract, ready to make memories that will last you a lifetime. Call Ryan 601.381.3320 to come and take a look today!!

**Ryan Butler**



REALTOR®, Land Specialist

4 Corner Properties LLC

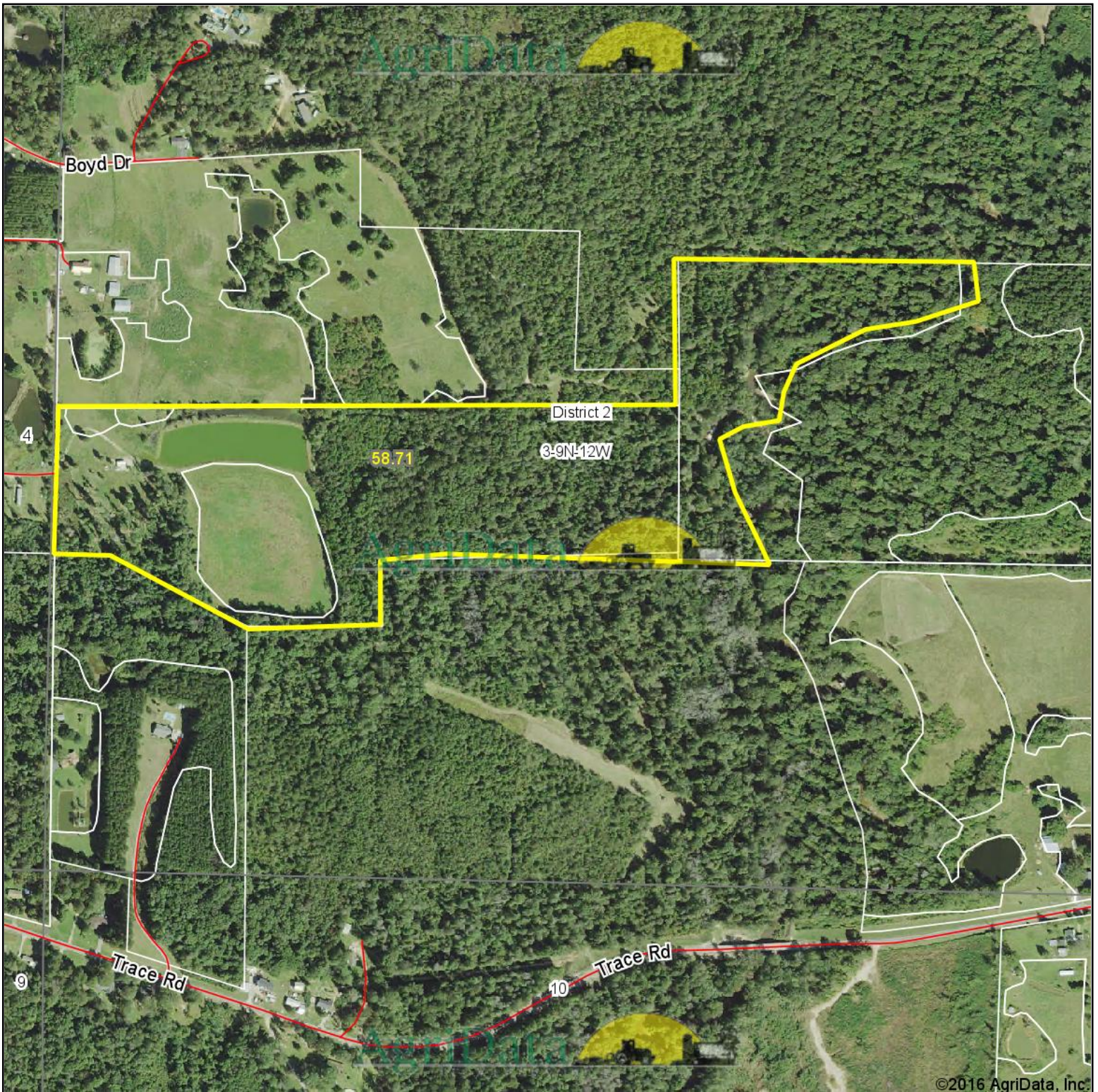
3239 Old Bay Springs RD

Laurel, MS 39440

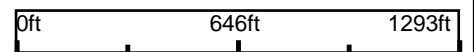




# Aerial Map

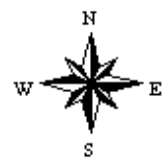


map center: 31° 46' 25.18, 89° 11' 29.53



Maps Provided By:  
 **surety**  
CUSTOMIZED ONLINE MAPPING  
© AgriData, Inc. 2016 [www.AgriDataInc.com](http://www.AgriDataInc.com)

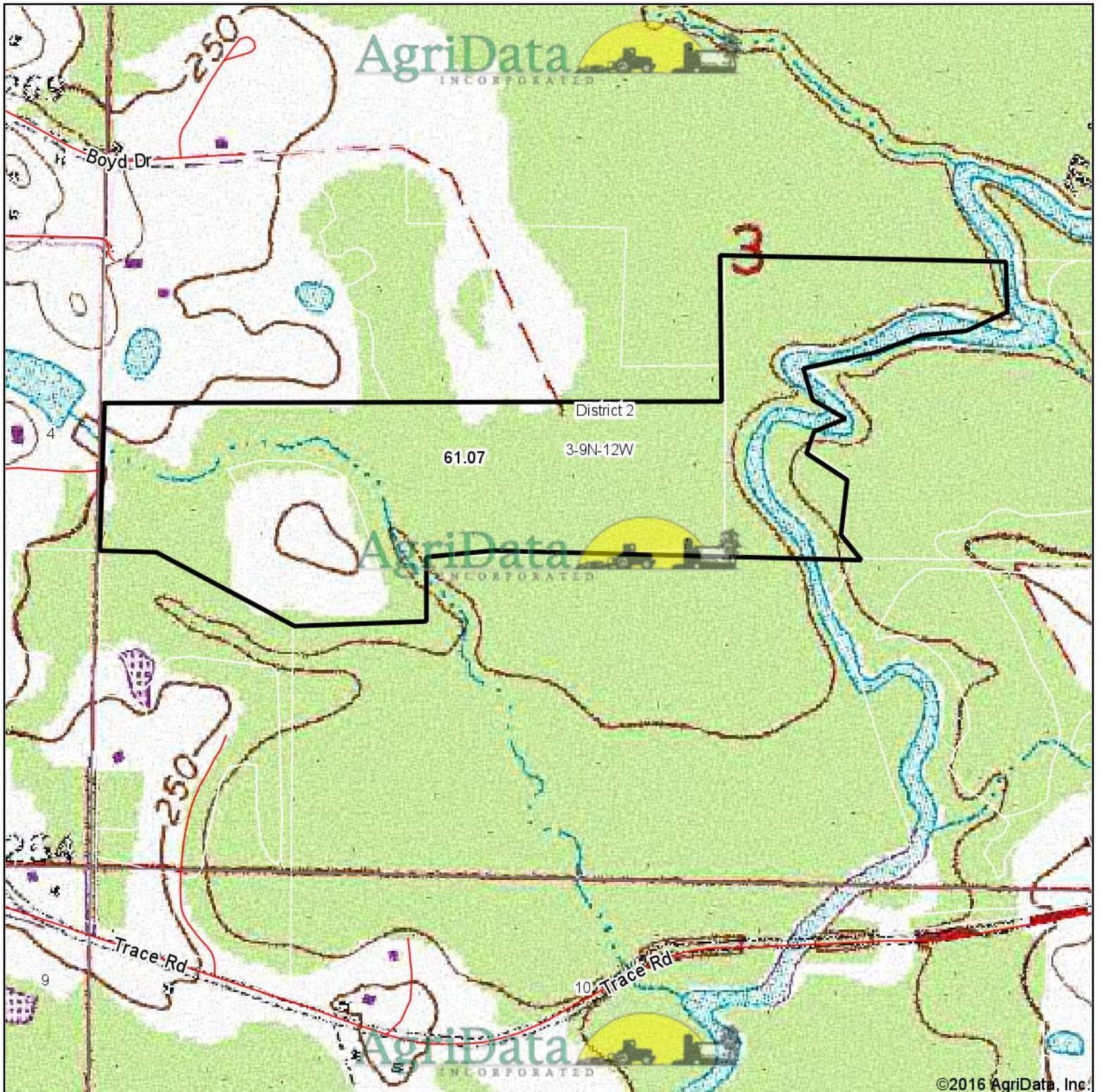
**3-9N-12W**  
**Jones County**  
**Mississippi**



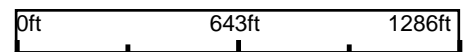
6/26/2016



# Topography Map

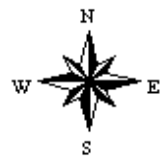


map center: 31° 46' 25.01, 89° 11' 31.69



**3-9N-12W**  
**Jones County**  
**Mississippi**

Maps Provided By:  
 **surety**  
CUSTOMIZED ONLINE MAPPING  
© AgriData, Inc. 2016 [www.AgriDataInc.com](http://www.AgriDataInc.com)



6/26/2016