

# LAND FOR SALE

## Logan County Rangeland



**Location:** 3 miles west, 4 miles south of Stapleton, Nebraska. Access west off US #83 via Road 20, then 3/4 mile north on Avenue 90.

**Legal Description:** SW1/4 Section 21; NW1/4 Section 28 except the south 1,040 foot—T17N-R28W of the 6th P.M., Logan County, NE.

**Acres:** 253.8 tax assessed acres

**Taxes:** 2015 real estate taxes payable in 2016 - \$1,138

**Soils:** Uly & Coly silt loam soils

**Land Use:** Hardland range with one earthen dam and 1 windmill.

**Price:** \$250,000

**Comments:** Solid hardland range with county road access.

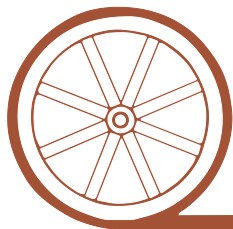
**Contact:** John Childears; Listing Agent 308-539-4450 or [john@agriaffiliates.com](mailto:john@agriaffiliates.com)  
Mike Polk, Jerry Weaver, Chase Dodson, Tony Eggleston, Bruce Dodson

**Agri Affiliates—Providing Farm, Ranch Real Estate Services**



**John Childears,**  
*Listing Agent*

*Offered Exclusively By:*



## AGRI AFFILIATES, INC.

*...Providing Farm - Ranch Real Estate Services...*

**NORTH PLATTE OFFICE**

P.O. Box 1166

I-80 & US Hwy 83

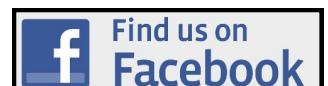
North Platte, NE 69103

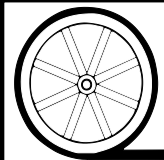
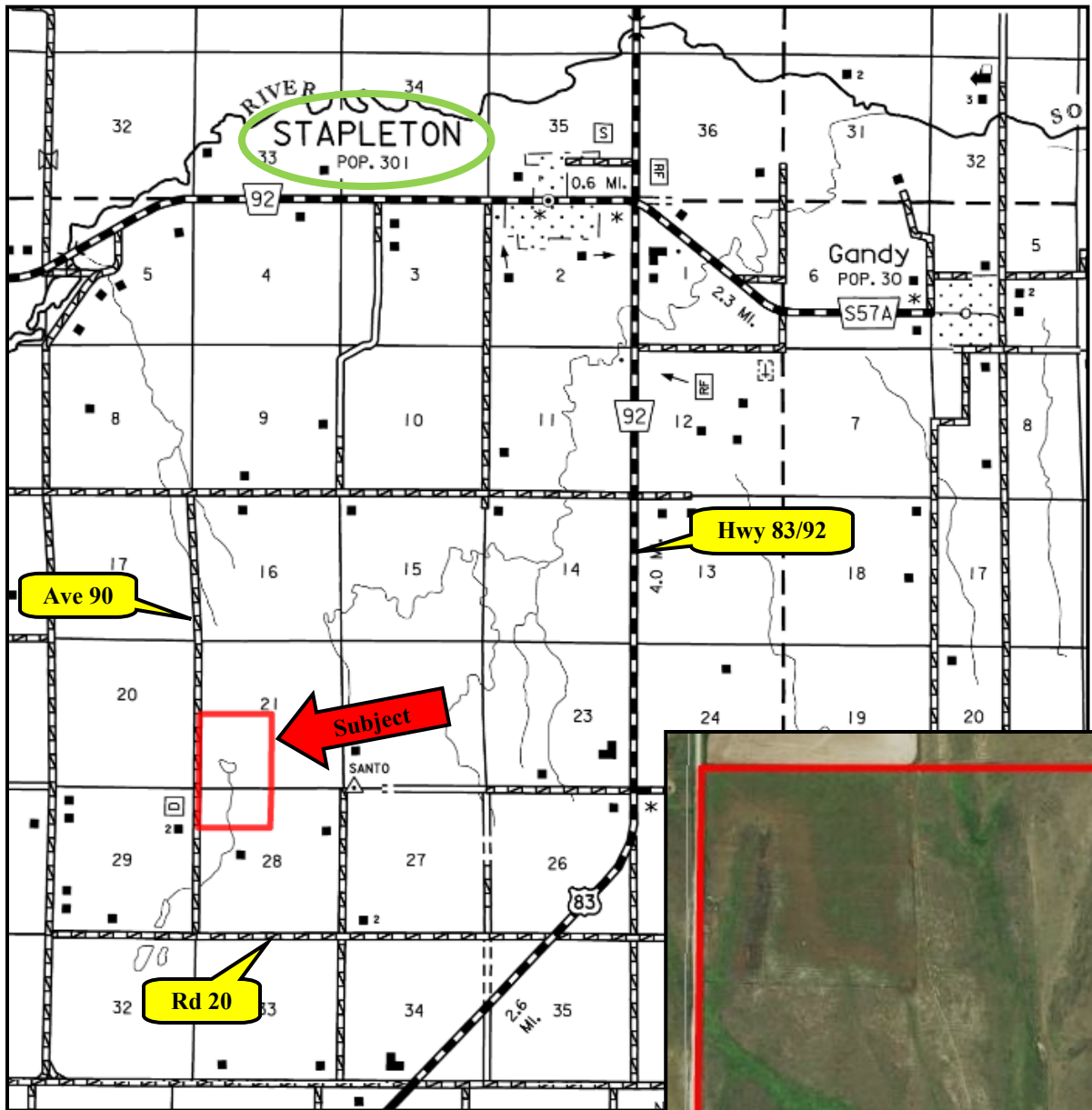
[www.agriaffiliates.com](http://www.agriaffiliates.com)

**(308) 534-9240**

Fax (308) 534-9244

Information contained herein was obtained from sources deemed reliable. We have no reason to doubt the accuracy, but the information is not guaranteed. Prospective Buyers should verify all information. All maps provided by Agri Affiliates, Inc. are approximations only, to be used as a general guideline, and not intended as survey accurate. As with any agricultural land, this property may include noxious weeds. Agri Affiliates, Inc. and all agents are acting as Agent of the Seller.





**AGRI AFFILIATES, INC.**  
...Providing Farm - Ranch Real Estate Services...