

# Classic City Estate

Southern  
Land Exchange



**Mark Costello**  
*Agent*

1551 Jennings Mill Road  
Suite 1400 A  
Watkinsville GA 30677

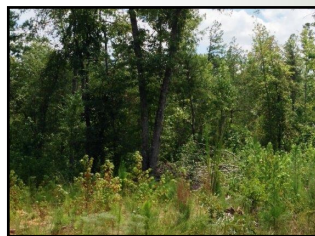
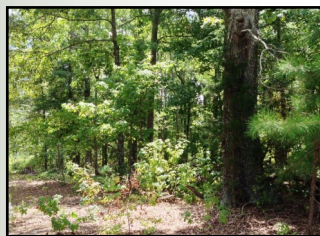
Phone: 706.549.5050  
Mobile: 706.207.5850  
Fax: 706.549.8909  
Email:  
[mcostello@southernlandexchange.com](mailto:mcostello@southernlandexchange.com)

Offered for \$10,000/acre



26.12 Acres | Quailwood Drive | Clarke County, GA | 30606

- Convenient Location
- Great Homeplace
- Priced to Sell



Classic City Estate is conveniently located to the local hospitals, Downtown Athens and Loop 10. Situated in a nice neighborhood, this property will make a great homeplace. Currently the zoning is RS-15 opening the possibilities for development. This tract is priced to sell based on other properties for sale in the area. Please call Mark Costello for a private showing. 706-207-5850

[www.SouthernLandExchange.com](http://www.SouthernLandExchange.com)