

37.5 Acres ready to be planted

\$50,000



- **Excellent Recreational Tract**
- **1320 feet of road frontage**
- **Accessible to Utilities**
- **Would make good pasture land**

This is a clean slate so you can make it what you want it to be. This property also has road frontage and located in a nice quite country environment. Come and check out this outstanding bargain today! Call for your private showing TODAY!!!!

Ron Odom
Realtor/Land Specialist
4 Corner Properties, LLC
3239 Old Bay Springs Rd
Laurel, MS 39440





Ron Odom
4 Corner Properties, LLC
601.410.3089
rodom@4cornerprop.com
www.4cornerprop.com





Information is Believed to be Accurate provided by the seller but not Guaranteed



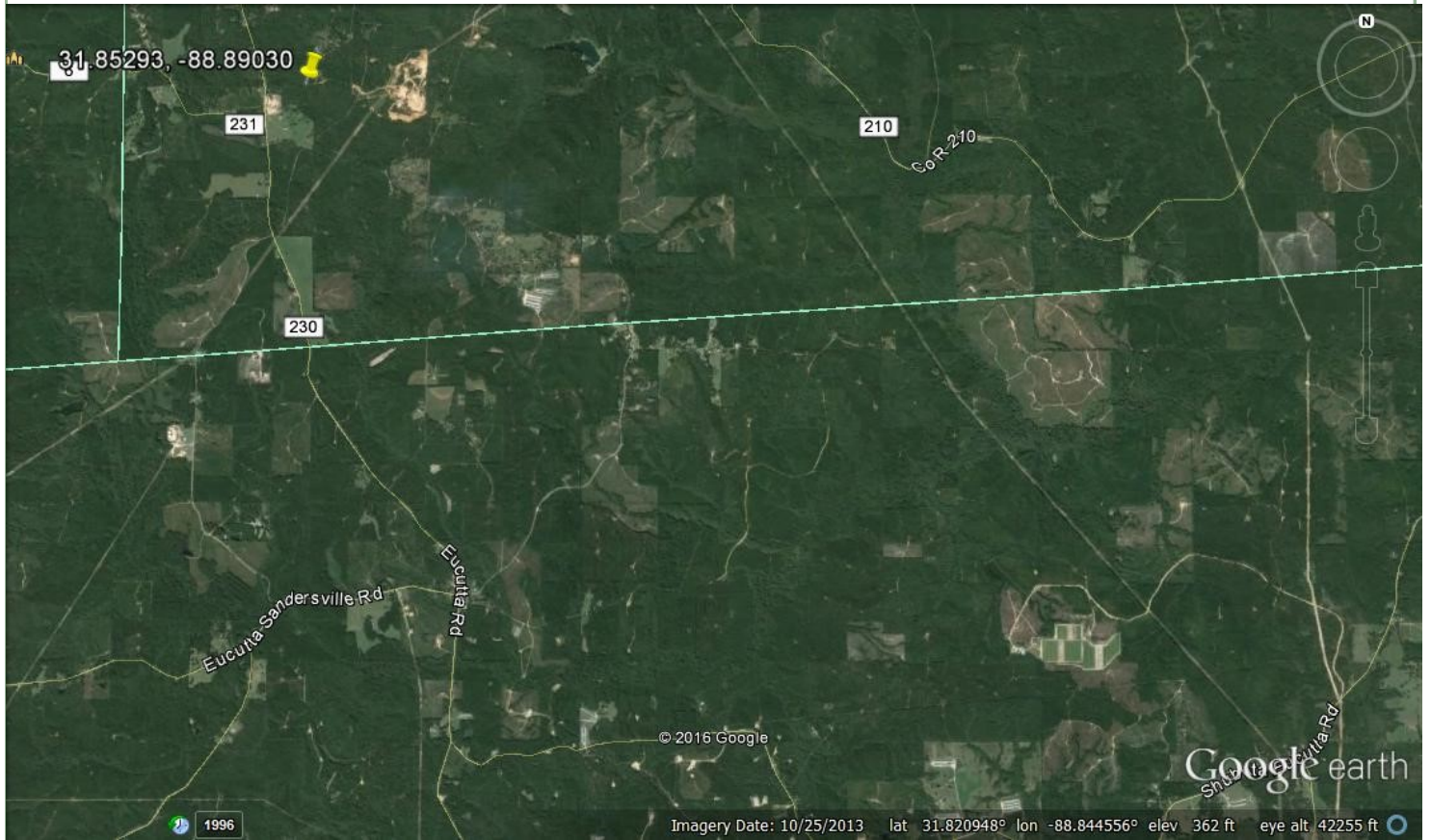
Ron Odom
4 Corner Properties, LLC
601.410.3089
www.4cornerprop.com





Ron Odom
4 Corner Properties, LLC
3239 Old Bay Springs RD
Laurel, MS 39440
www.4cornerprop.com





Aerial Map



Ron Odom
4 Corner Properties, LLC
601.410.3089
www.4cornerprop.com

