

*5 Star Country Properties, LLC*  
*Presented by Shelly Moschak*



***Timberland Ridge Ranch***  
*PR 2016 Caldwell, TX (Burleson & Milam Counties)*  
*SEE DRONE AERIAL VIDEO:*  
*<https://www.youtube.com/watch?v=uTeSf3-CkGQ>*





# Timberland Ridge Ranch

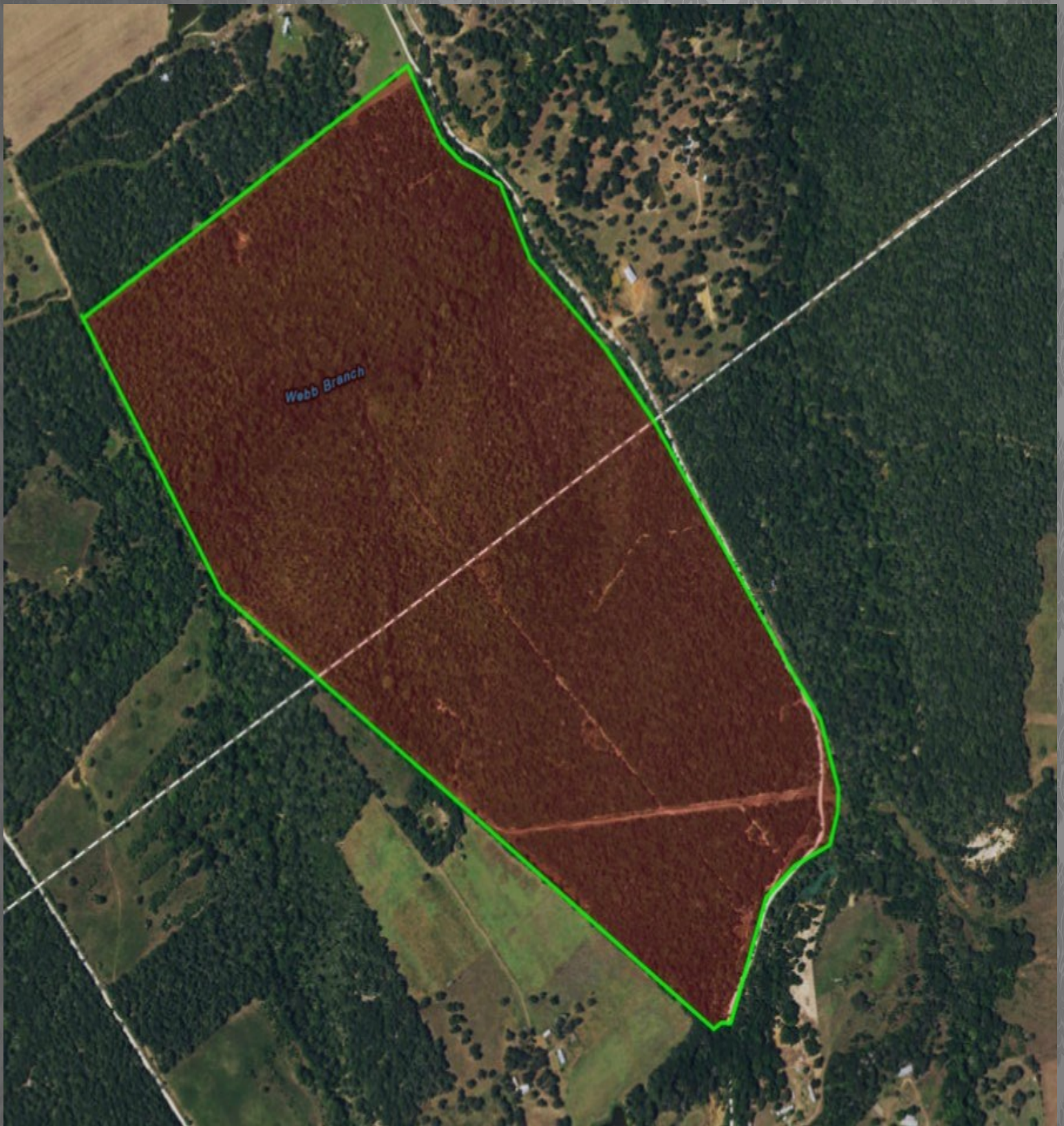
This beautiful 205.25 acres, ideal for hunting or a recreational tract, is heavily wooded, featuring a large variety of native trees, an established gravel entry road and meandering creek with bridge crossing. Endless opportunities here, for this blank canvas! Load up your 4-wheelers and make this your “weekend adventure”, or clear an area for secluded home site! Anything is possible on this tract! **HAR.COM; MLS# 16560828**











***5 Star Country Properties, LLC***

**Shelly Moschak, Broker/Owner**

**979-830-5040 (Office)**

**979-251-1343 (Cell)**

**shelly@5starcountry.com**

**www.searchtexasranchproperties.com**

**5★STAR**  
**COUNTRY PROPERTIES**

**2668 Hwy 36 S #311**

**Brenham, TX 77833**

