

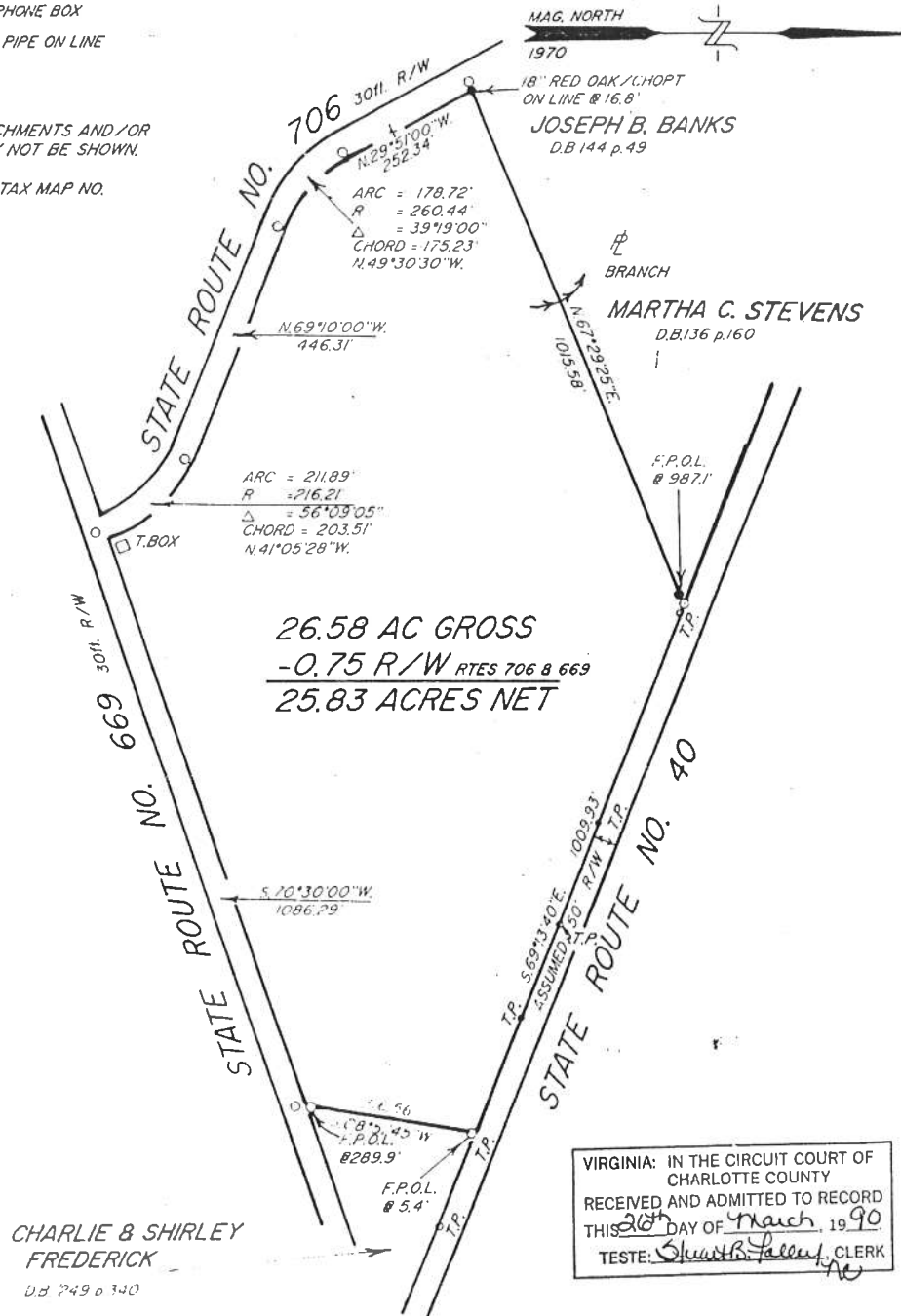
MAXEY-HINES & ASSOCIATES, P.C.
FARMVILLE - VIRGINIA

LEGEND

○ T.P. = TELEPHONE POLE
□ T.BOX = TELEPHONE BOX
F.P.O.L. = FOUND PIPE ON LINE

NOTE:

1. ALL ENCROACHMENTS AND/OR EASEMENTS MAY NOT BE SHOWN.
2. PORTION OF TAX MAP NO. 36 - 1 - A



SCALE: 1 in. = 200 ft. DATE: FEB. 21, 1990 TOTAL ACREAGE: 26.58 acres
REQUESTED BY: CHARLES LLOYD FREDERICK
OWNER: KMI CONTINENTAL PINETREE INC. D.B. 228 p. 677
LOCATED IN: ROANOKE DISTRICT, CHARLOTTE COUNTY, VIRGINIA
PURPOSE: TO DELINEATE BOUNDARIES OF 26.58 ACRES; BEING THE NORTHWEST PORTION OF A 158.65 ACRE TRACT.

