

LAND FOR SALE

Palisade Dryland



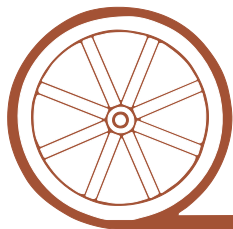
- Location:** From Palisade, Nebraska the property is located approximately 1 1/2 miles south, then 3 3/4 miles west on county gravel road.
- Legal Description:** SE1/4 Section 8-T4N-R34W of the 6th P.M., Hitchcock County, Nebraska.
- Acres:** 164 tax assessed acres
- Taxes:** 2015 taxes payable in 2016 - \$3,321.26
- Land Use:** Property is entirely non-irrigated cropland.
- FSA Info:** 159.97 acres of cropland; Crop base/PLC Yields: Corn 75.11 acres at 88 bushels; Soybeans 6.37 acres at 34 bushels; Wheat 26.61 acres at 46 bushels; all enrolled in ARC-County.
- Soils:** All Class II soils, Keith and Blackwood silt loams.
- Price:** \$395,000
- Comments:** Very productive cropland with a submersible stock well for aftermath grazing.
- Contact:** **Bruce Dodson; Listing Agent 308-539-4455 or bruce@agriaffiliates.com**
Jerry Weaver, Chase Dodson, Mike Polk,
John Childears, Tony Eggleston, Don Walker

Agri Affiliates—Providing Farm, Ranch Real Estate Services



Bruce Dodson,
Listing Agent

Offered Exclusively By:

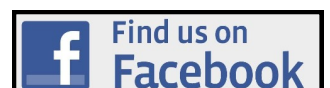


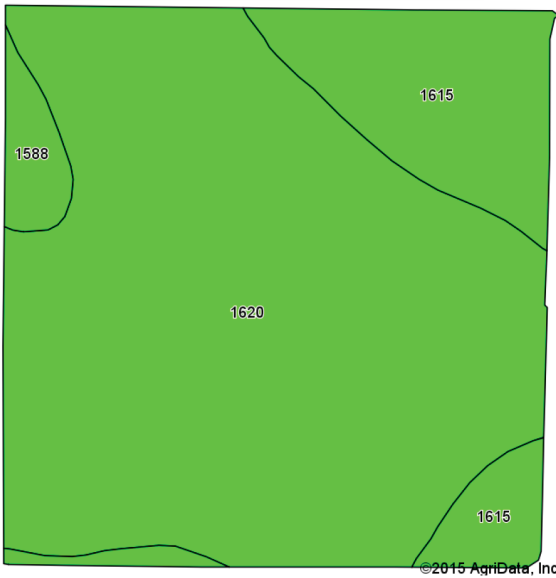
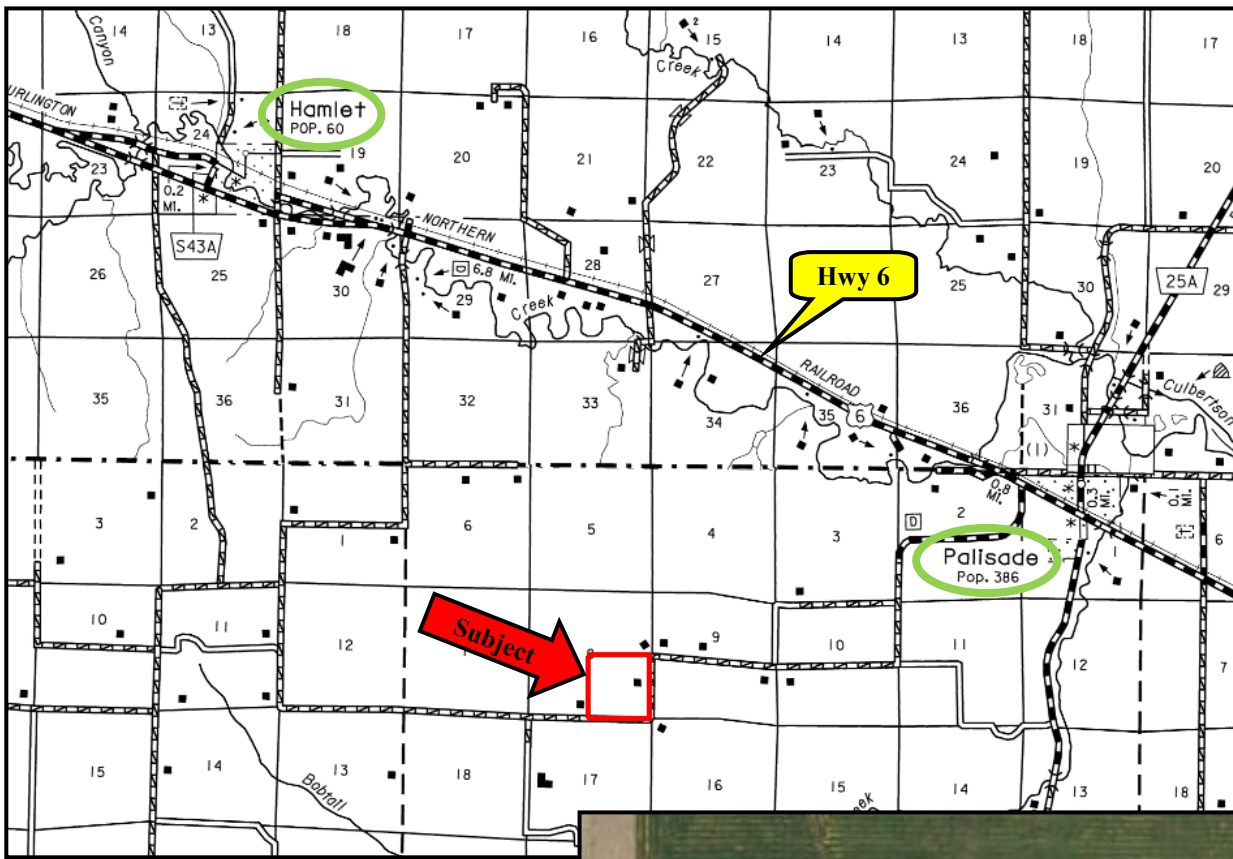
AGRI AFFILIATES, INC.

...Providing Farm - Ranch Real Estate Services...

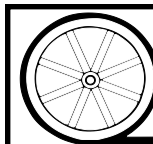
NORTH PLATTE OFFICE
P.O. Box 1166
I-80 & US Hwy 83
North Platte, NE 69103
www.agriaffiliates.com
(308) 534-9240
Fax (308) 534-9244

Information contained herein was obtained from sources deemed reliable. We have no reason to doubt the accuracy, but we do not guarantee it. Prospective Buyers should verify all information, including items of income and expense. All maps provided by Agri Affiliates, Inc. are approximations only, to be used as a general guideline, and not intended as survey accurate. As with any agricultural land, this property may include noxious weeds.





Code	Soil Description	Acres	Percent of field	Non-Irr Class Legend	Non-Irr Class *c
1620	Keith silt loam, 1 to 3 percent slopes	125.19	78.3%		lle
1615	Keith and Blackwood silt loams, 0 to 1 percent slopes	29.99	18.7%		llc
1588	Blackwood silt loam, 0 to 1 percent slopes	4.79	3.0%		llc



AGRI AFFILIATES, INC.

... Providing Farm - Ranch Real Estate Services. ...