

**Holthaus Farm**  
**92+/- Acres**  
**Peoria County, Illinois**



**Located 15 miles southwest of Peoria, Illinois**

**Located 3 miles northwest of Glasford, Illinois**

Trivoli, Illinois at Route 116, south 6.8 miles on Trivoli Road, County R25



**Highlights:**

**Income:**

53 +/- FSA crop acres  
(Part of Farm 5515)

**Recreation/Hunting:**

About 43% Timber

2 ponds

Branch of Copperas Creek  
near east side of farm

6 farm buildings

County Road R25 on  
west side of farm

Will be surveyed

Source: Agridata Inc. (portion being sold outlined in red)

**NEW PRICE**      **\$5,100 per acre; 92+/- acres**

**(309) 687-6010 - Call us for a complete brochure on the farm**

**Norm Bjorling, Peoria Managing Broker (309) 678-1019**

**Steve Burrow, Broker (309) 687-6008**

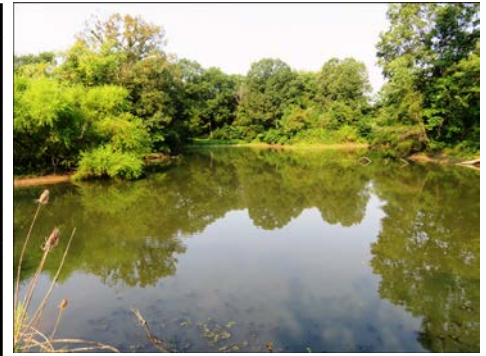
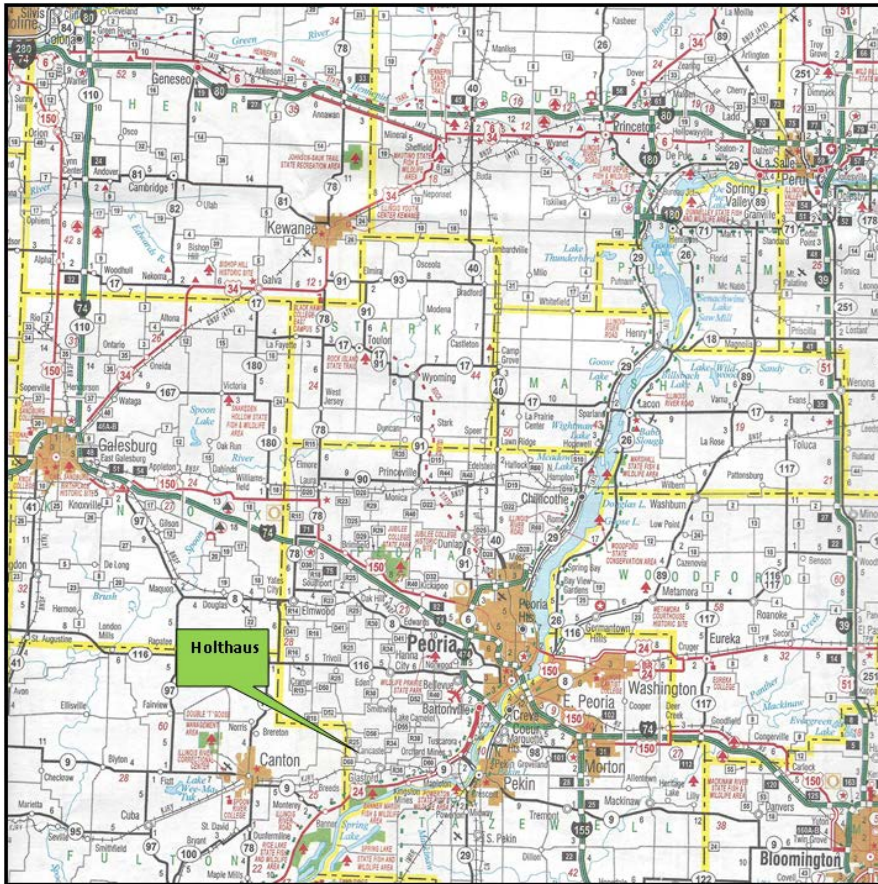
4530 N. University, Peoria, IL 61614

**DISCLAIMER:**

The information provided is believed to be accurate. However, it is subject to verification and no liability for errors or omissions is assumed. There are no warranties, expressed or implied, as to the information herein contained, and it is recommended that all buyers should make an independent inspection of the property. Norm Bjorling and Steve Burrow are designated agents with Soy Capital Ag Services and represent the Seller in this transaction.

**WWW.SoyCapitalAg.com**





### Glasford, Illinois:

½ mile north on Glasford Road,  
2 miles west on Glasford-Canton Road,  
2 miles north on Trivoli Road

### Trivoli, Illinois: Route 116

6.8 miles south on Trivoli Road/  
County R25

### Peoria, Illinois:

At I-474 take Route 116 west to Trivoli, IL  
then 6.8 miles south on Trivoli Road/R25

At I-474 take Route 24 west 14.7 miles to  
Trivoli Road, take Trivoli Road north 4  
miles

### Banner, Illinois:

At junction go east on Routes 9 & 24 for 3  
miles to Trivoli Road, take Trivoli Road  
north 4 miles

