



We Sell Big Lake!

Setting the trend for how Real Estate is sold in the Midwest.

www.BarnesRealty.com

18156 Hwy 59
Mound City, MO 64470
(660) 442-3177

1711 Oregon
Hiawatha, KS 66434
(785) 742-4580

1708 Prairie View Rd, Suite B
Platte City, MO 64079
(816) 219-3010

8 Spacious Lots & Mobile Home Lake Shore Drive, Big Lake, MO



This property features EIGHT large lots with a well-kept elevated mobile home. It includes shed storage, a nice garden area, 2 septic and 2 electrical hook-ups, a water pit and 2 drive entries. Located right across from the Big Lake State Park, it is well-shaded and is within walking distance of the public boat ramp with water/fishing access. With great highway frontage, this property offers endless possibilities to a new owner.

**Disclosure: There is a second mobile home on the property that is not in good condition & needs to be removed.*

There is a large concrete slab behind second mobile home that could be used by a new owner.

Price: \$59,900.00

Eight Lots: 480' x 155'

2015 Taxes: \$577.11

Bedrooms: 2

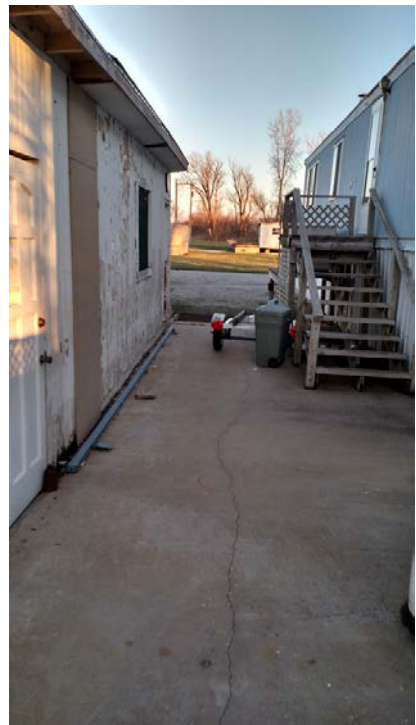
Baths: 1

Year Built: 1973

Other Features of Mobile Home:

- Refrigerator, glass top stove, microwave & washer/dryer included
- Updated bathroom with over-sized step-in shower, high-seated toilet, newer fixtures & Pex® plumbing
- 2 large walk-in closets in each bedroom
- Baseboard heating throughout – individual thermostats for each bedroom & living/dining area
- Wood stove with triple-insulated stainless steel chimney (only used a few times)
- Newer double-paned windows throughout
- Spacious kitchen pantry
- Water heater new in 2015
- Anchored on concrete pad with brick foundation & 5' metal skirt/enclosure with 3 access doors
- Handicap-accessible ramp

Agent: Ryonee McCann
(409) 790-5283 or ryonee@barnesrealty.com





Unused mobile home



Concrete slab behind unused mobile home

