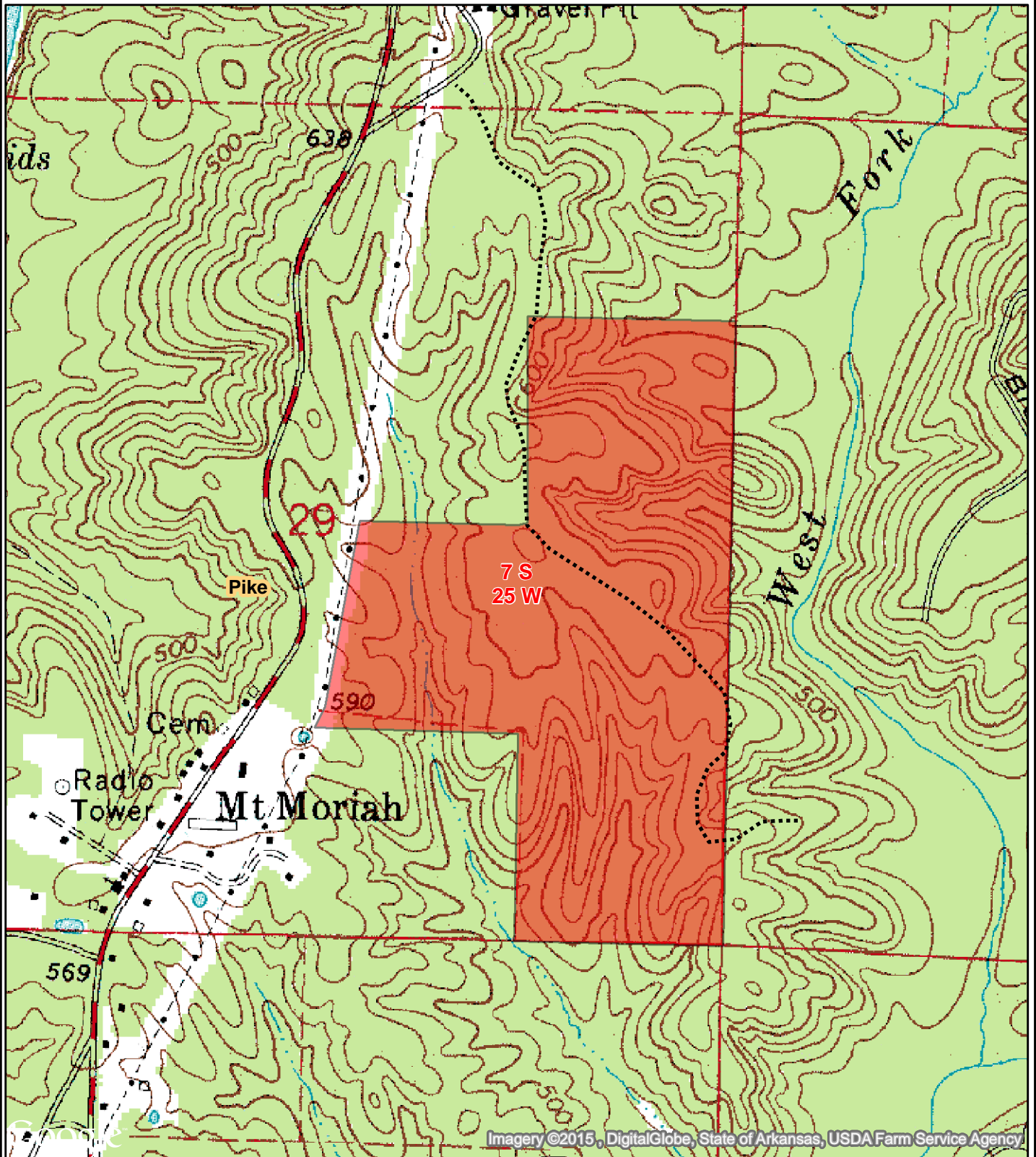


**NOTICE OF LAND SALE**  
**"Mt. Moriah Tract" - Listing #4514**  
**Pt. Sec. 29, T7S, R25W, Pike County, Arkansas**  
**Containing 154.7 acres, more or less**



Imagery ©2015, DigitalGlobe, State of Arkansas, USDA Farm Service Agency

0 0.125 0.25  
Miles



Created: October, 2015  
Drawn By: ATG