

# FOR SALE

<sup>6</sup>  
Building Lots

Pleasant Twp • Wabash County

## Beautiful Building Sites in a Wooded Location

### Property Information

**LOCATION:** In the southeast corner of CR 900 N  
and SR 15, in Cherry Springs Estates

**ZONING:** Agricultural

**TOPOGRAPHY:** Rolling

**SCHOOL DISTRICT:** Manchester Community Schools

**ANNUAL TAXES:**

Tract 1: <i>Unavailable</i>	Tract 3: \$34.44	Tract 5: \$30.40
Tract 2: \$30.40	Tract 4: \$32.44	Tract 6: \$30.40

**DITCH ASSESSMENT:**

Tract 3: \$5.00    Tract 4: \$5.00

**SPECIAL NOTES:**

Building Covenants  
Available Upon Request



### Tract Details

**TRACT 1:** 6.622<sup>±</sup> Acres

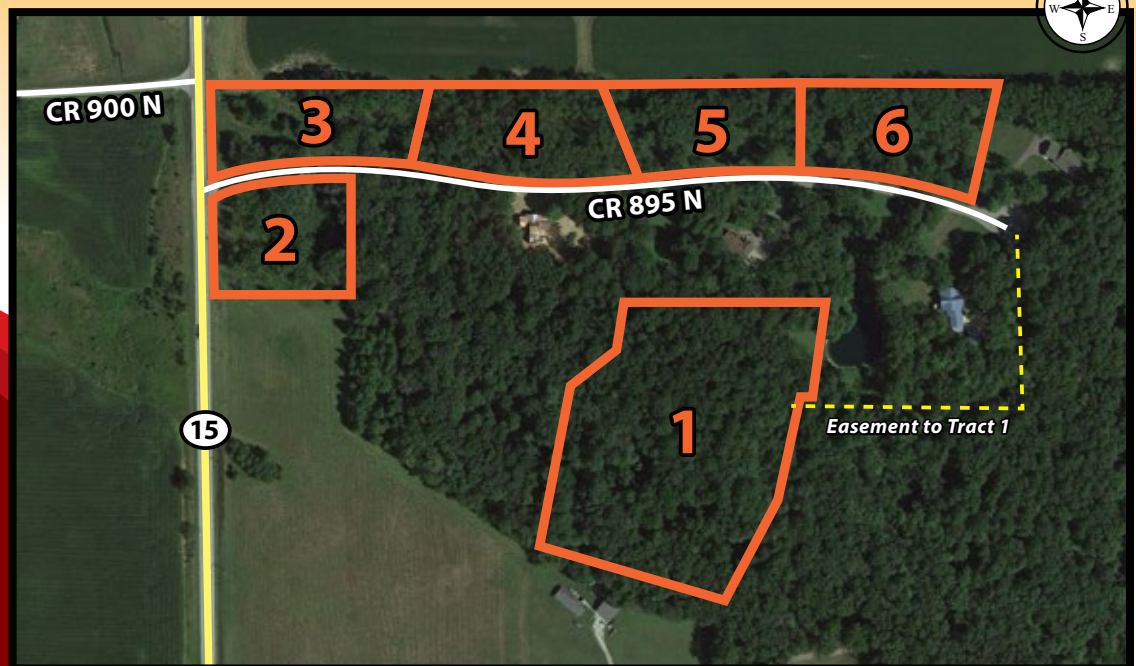
**TRACT 2:** 1.6<sup>±</sup> Acres

**TRACT 3:** 1.69<sup>±</sup> Acres

**TRACT 4:** 1.58<sup>±</sup> Acres

**TRACT 5:** 1.5<sup>±</sup> Acres

**TRACT 6:** 1.5<sup>±</sup> Acres



Jon Rosen

260-740-1846

jonr@halderman.com

Bill Earle

260-982-8351

bille@halderman.com

**HALDERMAN**  
REAL ESTATE  
SERVICES

HLS# JRR-11750 (16)

800.424.2324 | www.halderman.com

