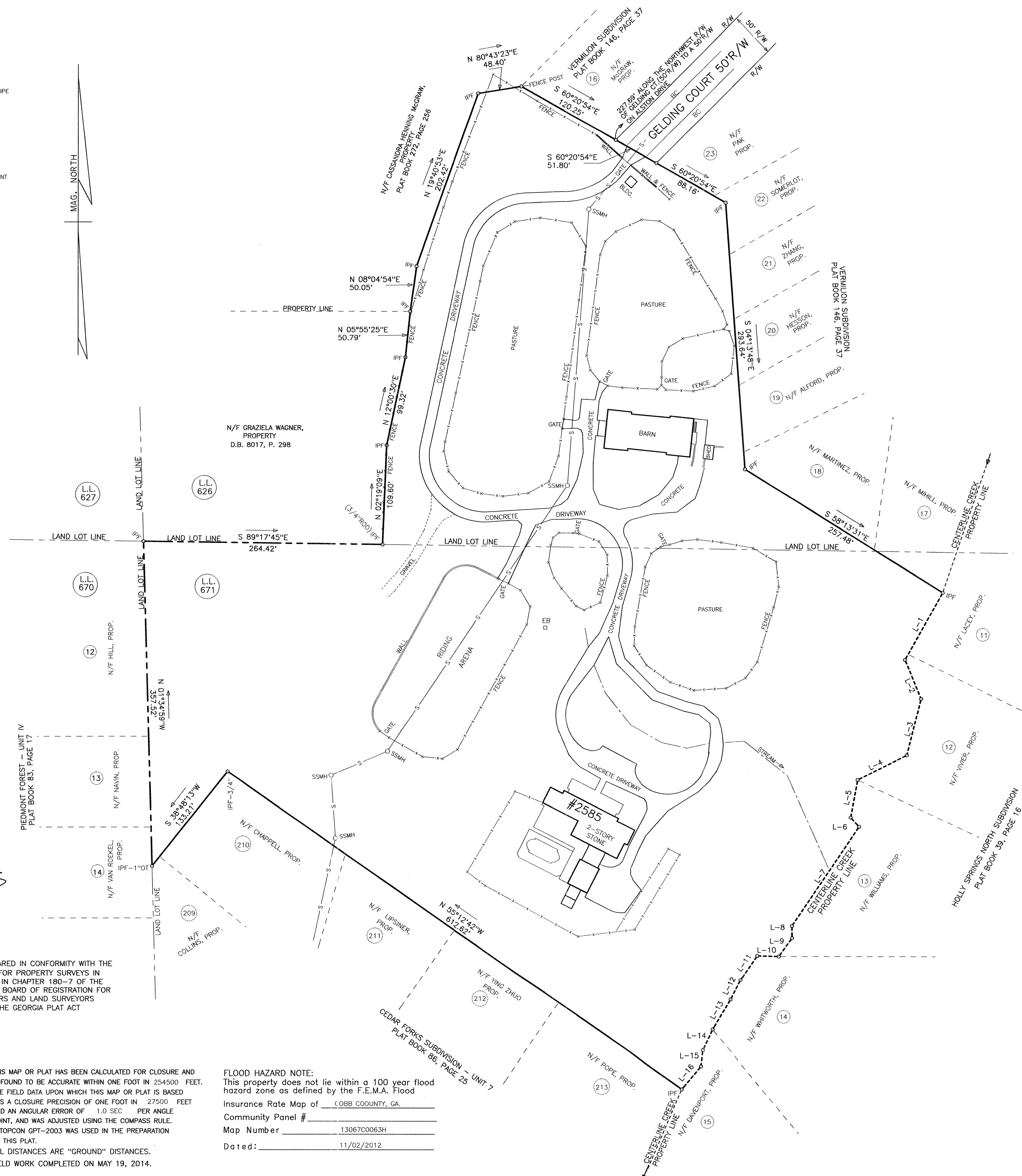


AC = AIR CONDITIONER
AE = ACCESS EASEMENT
BC = BACK OF CURB
BL = BUILDING LINE
BM = BENCH MARK
BSMH = BELL SOUTH MANHOLE
C = CABLE
CB = CATCH BASIN
CC = CORRUGATED CORRUGATED METAL PIPE
CH = CHORD
CMF = CONCRETE MONUMENT FOUND
CMP = CORRUGATED METAL PIPE
CT = CRIMP TOP
C/C = CLEAN OUT
C&G = CURB & GUTTER
DE = DRAINAGE EASEMENT
DP = DROP INLET
DI = DUCTILE IRON PIPE
EB = ELECTRICAL BOX
EC = EDGE OF CONCRETE
EDE = EMERGENCY DRAINAGE EASEMENT
EEC = EMERGENCY EFFICIENT CAR
EF = EDGE OF PAVEMENT
FH = FIRE HYDRANT
FO = FIBER OPTIC
GM = GAS METER
HC = HANDICAP
HDPE = HIGH DENSITY POLYETHYLENE
HE = HEADWALL
IE = INVERT ELEVATION
IPF = IRON PIN FOUND (RE-BAR)
IPS = IRON PIN SET (RE-BAR)
JB = JUNCTION BOX
LL = LAND LOT
LLL = LAND LOT LINE
LP = LIGHT POLE
MSL = MEAN SEA LEVEL
N/F = NOW OR FORMERLY
OS = OPEN LOT STRUCTURE
OT = OPEN TOP
PT = PROPERTY LINE
PP = POWER POLE
RAD = RADIUS
RCP = REINFORCED CONCRETE PIPE
RW = RIGHT OF WAY
SSE = SANITARY SEWER EASEMENT
SMWH = SANITARY SEWER MANHOLE
SW = SIDEWALK
TB = TELEPHONE BOX
TBM = TRIP POINT BENCHMARK
TSB = TRAFFIC SIGNAL BOX
TSP = TRAFFIC SIGNAL POLE
VPO = VAN POOL ONLY
WM = WATER METER
WV = WATER VALVE
-G- = GAS LINE
-R- = REUSE RAINWATER
-S- = SANITARY SEWER LINE
-T- = TELEPHONE LINE
-W- = WATER LINE
-X- = FENCE LINE
-P- = POWER LINE
-UT- = UNDERGROUND POWER
-UT- = UNDERGROUND TELEPHONE



CALL ALONG CENTERLINE CREEK		
COURSE	BEARING	DISTANCE
L-1	S 29°29'26"W	84.62'
L-2	S 22°36'05"E	46.58'
L-3	S 141°15'5"W	64.22'
L-4	S 63°06'42"W	60.94'
L-5	S 10°34'51"W	41.74'
L-6	S 42°02'30"E	13.81'
L-7	S 34°08'08"W	131.92'
L-8	S 00°15'07"E	13.89'
L-9	S 36°08'13"W	24.78'
L-10	N 88°27'37"W	23.76'
L-11	S 34°12'42"W	32.97'
L-12	S 26°29'33"W	24.46'
L-13	S 301°10'4"W	38.33'
L-14	S 25°09'09"W	25.42'
L-15	S 06°54'40"W	16.95'
L-16	S 40°14'50"W	32.78'

SITE AREA= 11.759 ACRES

SURVEY FOR:
JAMES R. STRAIT and
JOAN PENELOPE STRAIT
LAND LOTS 626 & 671
16th DISTRICT, 2nd SECTION
COBB COUNTY, GEORGIA

SCALE: 1" = 60' DATE: MAY 21, 2014

60 0 60 120 180

GRAPHIC SCALE - FEET

PREPARED BY:
BATES-LONG & ASSOCIATES
11205 ALPHARETTA HWY., SUITE A-1
ROSWELL, GEORGIA 30076
TELEPHONE: 770-442-0282
FAX: 770-663-7764
EMAIL: bateslong@bellsouth.net