

Denman Ferguson
601-214.-6433
4 Corner Properties, LLC
577 Hwy 51 Suite A
Ridgeland, MS 39157
denman@4cornerprop.com



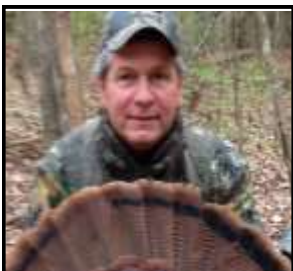
Cell: 601-214-6433
Office: 601-504-5088
Fax: 601-510-8163

LEAKE COUNTY TIMBER INVESTMENT *80 ACRES, LEAKE COUNTY, MS*

- 80 Acre Hunting/ Timber Tract
- 6 Year Old Plantation Pine
- Scattered Large Hardwoods
- Great Young Timber Investment
- Good Road System and ATV Trails
- Small I Creek Runs Through Property
- Abundant Deer and Turkey
- Scattered Hardwoods Acorn Mast
- Power Available at Road
- Several Cabin Sites with an Old Well



Leake County Timber Investment Tract, This property consists of 80 acres of 6 year old plantation pine with 6 to 8 acres in hardwoods along the creek bottom, that make for unique hunting setups, there are several great food plot locations. Good road system around and through property. Deer and turkey are abundant. Terrific young timber investment. This property is priced to sell so call for your private showing today. Call Denman Ferguson 601-214-6433
Directions: From Hwy 43N and Hwy 17 go north on Hwy 43 for 5.3 miles then turn left onto Damascus Church Road, go for 2.7 miles and turn right by sign on the left onto easement road. Then go to locked chain gate to access property.



Denman Ferguson
601-214-6433
4 Corner Properties, LLC
577 Hwy 51 Suite A
Ridgeland, MS 39157
denman@4cornerprop.com

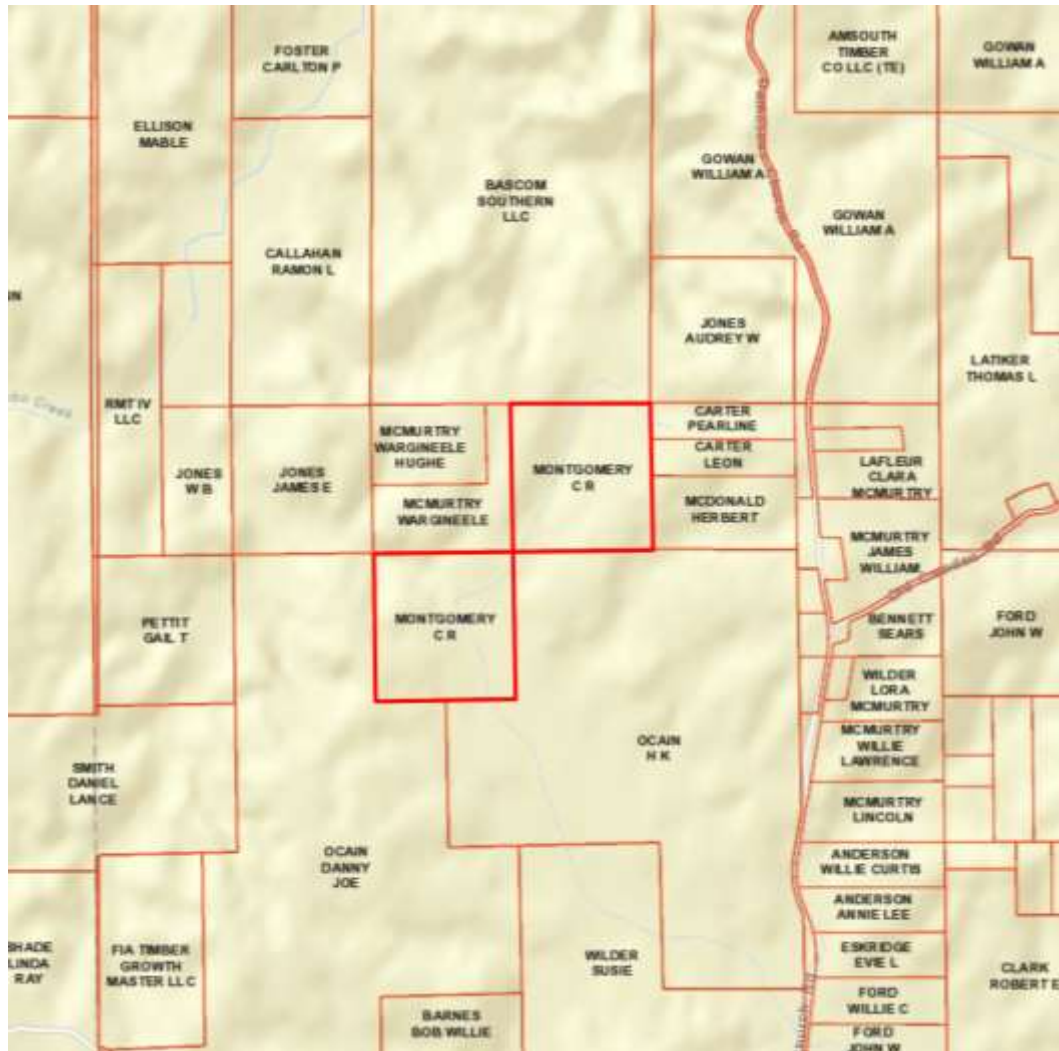


Information is Believed to be Accurate but not Guaranteed



Denman Ferguson
 601-214-6433
 4 Corner Properties, LLC
 577 Hwy 51 Suite A
 Ridgeland, MS 39157
denman@4cornerprop.com





Ownership



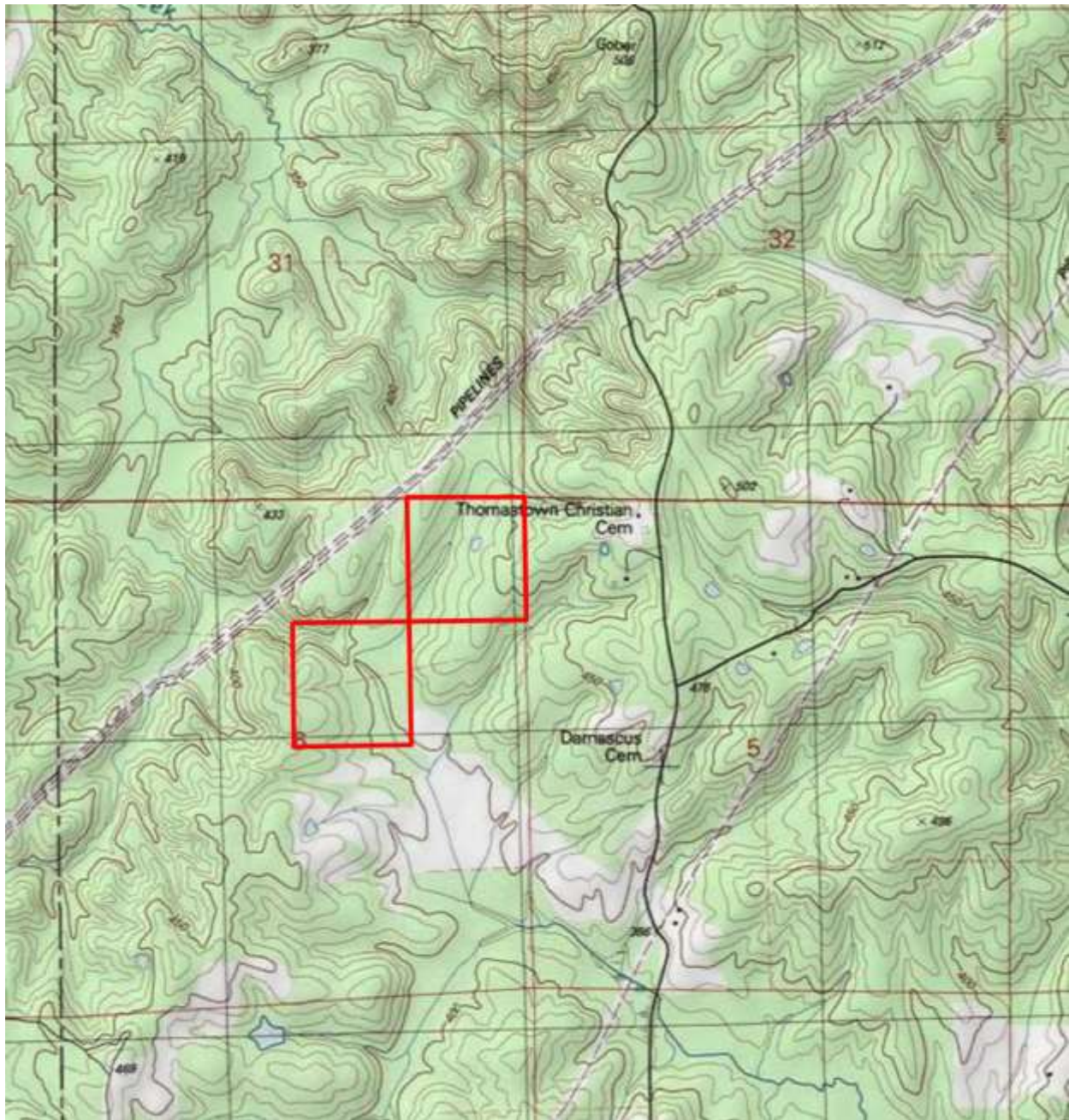
Denman Ferguson
 601-214-6433
 4 Corner Properties, LLC
 577 Hwy 51 Suite A
 Ridgeland, MS 39157
denman@4cornerprop.com



Aerial Photo



Denman Ferguson
601-214-6433
4 Corner Properties, LLC
577 Hwy 51 Suite A
Ridgeland, MS 39157
denman@4cornerprop.com



Topo Map



Denman Ferguson
601-214,-433
4 Corner Properties, LLC
577 Hwy 51 Suite A
Ridgeland, MS 39157
denman@4cornerprop.com



Directional Map

Directions: From Hwy 43N and Hwy 17 go north on Hwy 43 for 5.3 miles then turn left onto Damascus Church Road, go for 2.7 miles and turn right by sign on the left onto easement road. Then go to locked chain gate to access property.



Denman Ferguson
601-214-6433
4 Corner Properties, LLC
577 Hwy 51 Suite A
Ridgeland, MS 39157
denman@4cornerprop.com