

FOR SALE

Clay Twp • Cass County

117^{+/-}
Acres

Good Farmland & Woods

98.46^{+/-} Tillable • 18.19^{+/-} Wooded

Property Information

LOCATION: 2 miles north of Logansport, IN

ZONING: Agricultural

TOPOGRAPHY: Level - Gently Rolling

SCHOOL DISTRICT: Logansport
Community School Corporation

ANNUAL TAXES: \$4,302.00



Larry Jordan

765-473-5849

lj@halderman.com

AJ Jordan

317-697-3086

ajj@halderman.com

HALDERMAN
REAL ESTATE
HLS# LWJ-11737 (16)
SERVICES



800.424.2324 | www.halderman.com

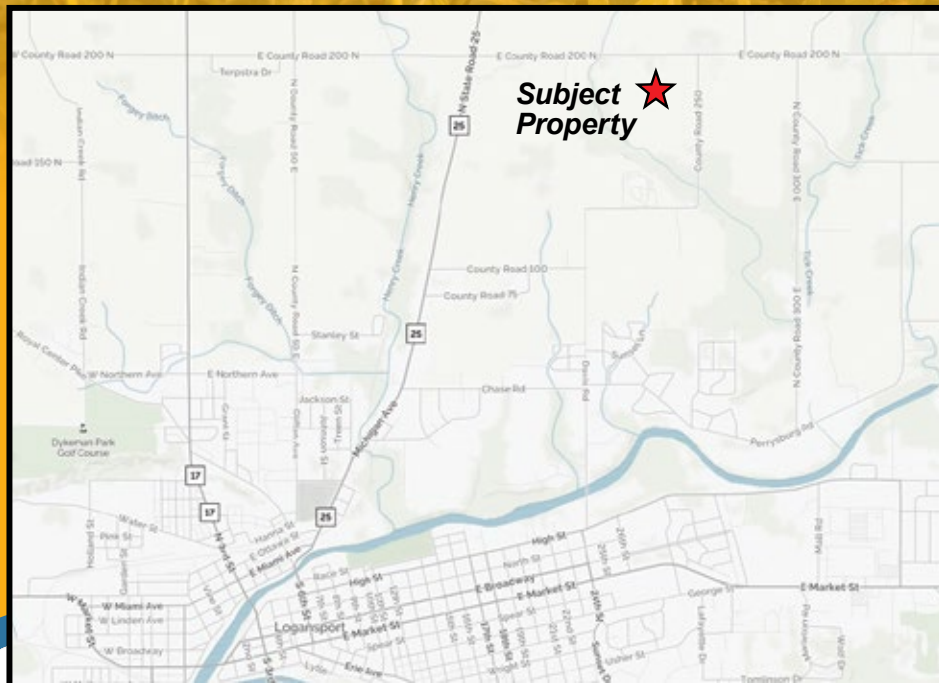
FOR SALE

Clay Twp • Cass County

117^{+/-}
Acres

Good Farmland & Woods

98.46^{+/-} Tillable • 18.19^{+/-} Wooded



Code	Soil Description	Acres	Corn	Soybeans
Field borders provided by Farm Service Agency as of 5/21/2008. Soils data provided by USDA and NRCS.				
RsB	Riddles silt loam, 2 to 6 percent slopes	73.35	140	49
RsC	Riddles silt loam, 6 to 12 percent slopes	11.59	135	47
Sm	Sleeth silt loam	7.93	140	45
Rn	Rensselaer loam, till substratum	5.59	175	49
Weighted Average		141.4	148.4	